



£1,350 Per Calendar Month

23 Locksash Close, West Wittering, Chichester, West Sussex PO20 8QP





1



3



1

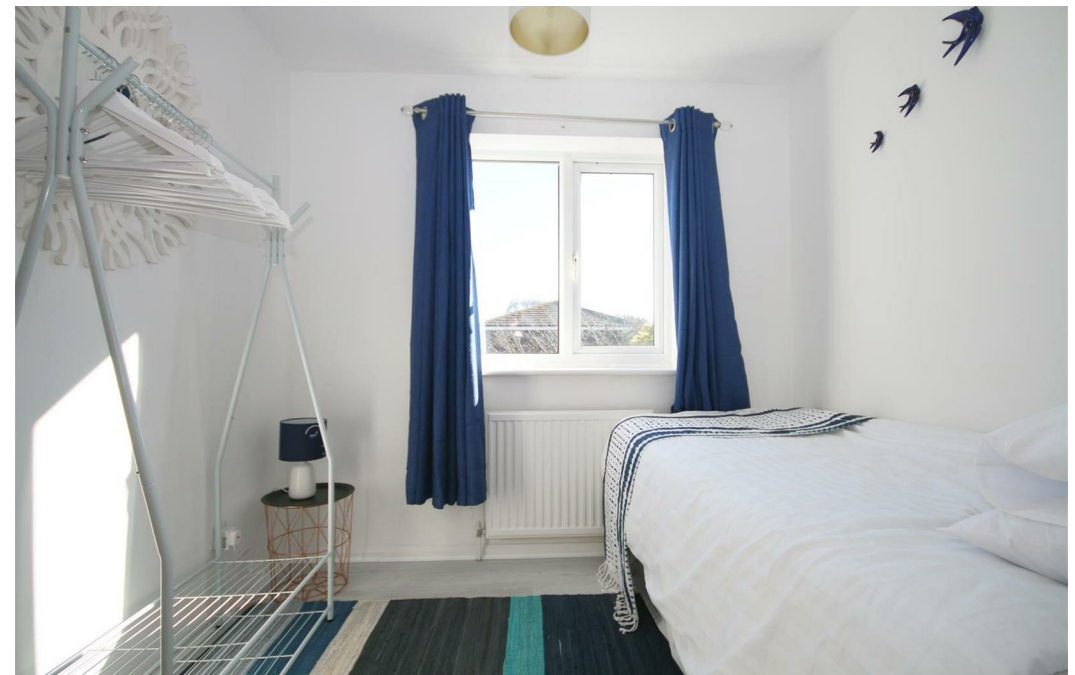


C

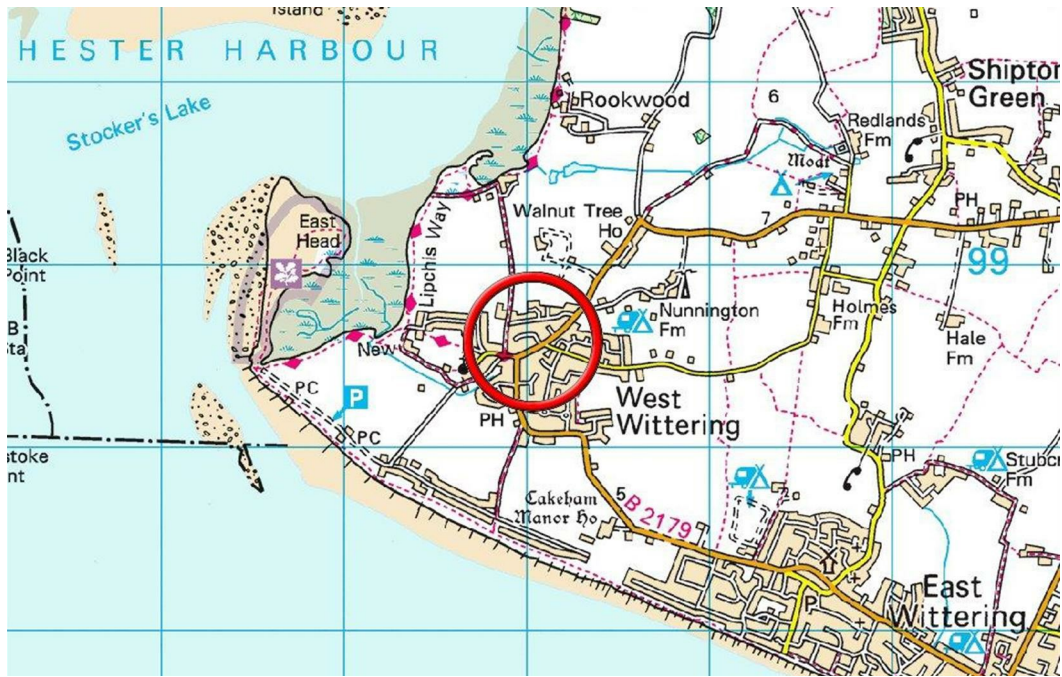


D



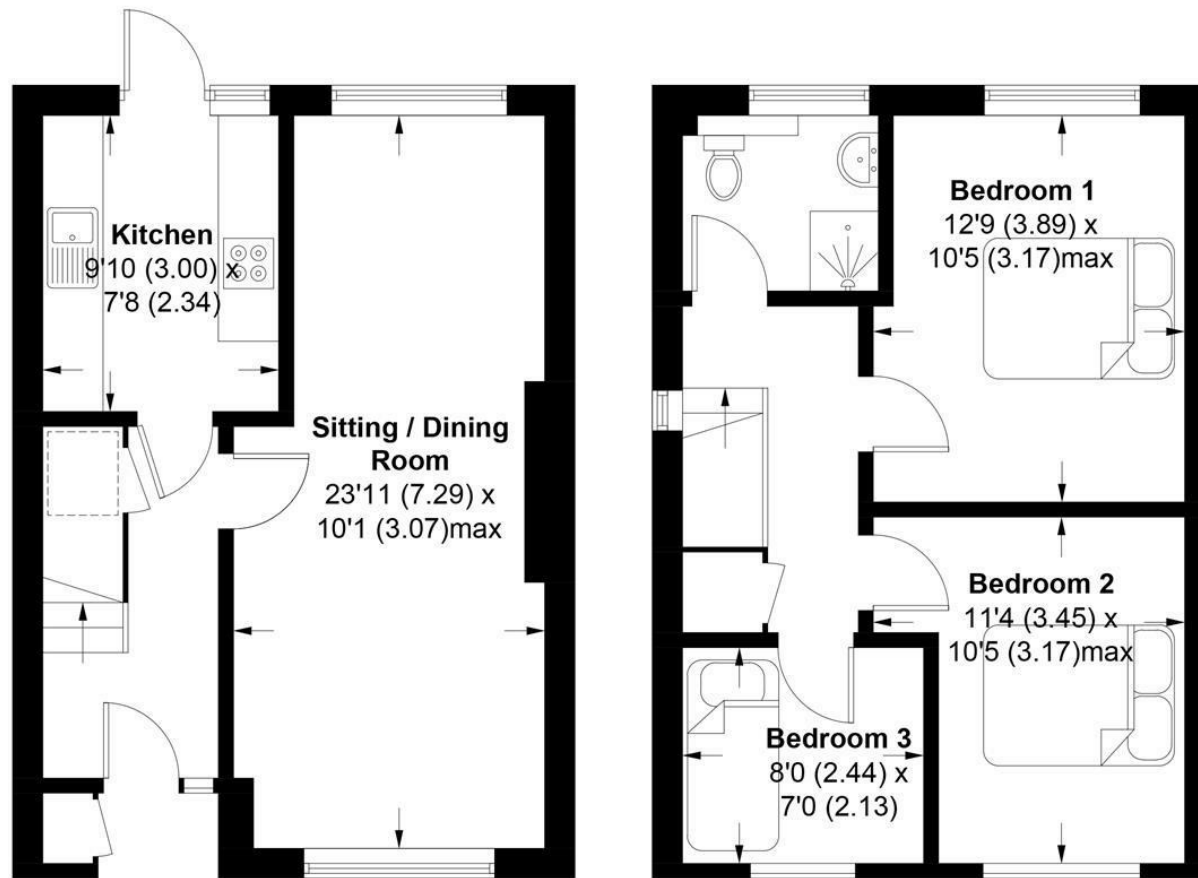






Locksash Close, West Wittering, PO20

APPROXIMATE GROSS INTERNAL AREA = 786 SQ FT / 73 SQ M



GROUND FLOOR

FIRST FLOOR

This plan is for layout guidance only. Not drawn to scale unless stated. Windows and door openings are approximate. Whilst every care is taken in the preparation of this plan, please check all dimensions, shapes and compass bearings before making any decisions reliant upon them. (ID494749)

Produced for Baileys Estate Agents

Working in co-operation with the owners we have tried to be accurate and informative in the presentation of our property details. Baileys would advise that no representations or warranties are made or given in respect of the condition of any items mentioned in the Sales Particulars. If however, you are not sure about a particular point please contact us to verify the information. This is especially important if viewing the property involves travelling some distance.