



Offers In Excess Of £1,750,000
Wispers Tamarisk Walk, East Wittering, West Sussex PO20 8DQ





2



5



3



D



F

The property can be accessed from the beach via the french doors opening into the spacious dining room with arches opening into the kitchen/breakfast room and sitting room areas with panoramic views overlooking the beach, foreshore and sea, with views over the eastern Solent and Isle of Wight and eastward towards Selsey, over Bracklesham Bay.

The kitchen/breakfast room is well fitted with a range of floor and wall mounted cupboards and drawers with stone worktops, inset sink, gas hob with filter hood over and eyelevel double oven and space for dishwasher and upright fridge/freezer.

The generously proportioned sitting room includes a feature fireplace.

The inner hall leads to the rear outside porch and five bedrooms, including a family bathroom and cloakroom/shower.

Bedroom 1 includes an ensuite comprising shower/ wash basin and wc. plus wardrobe cupboards and access to a utility room with built in worktops and cupboards with space and plumbing for washing machine, plus door to outside - this current layout provides potential to create an annexe space, if desired.

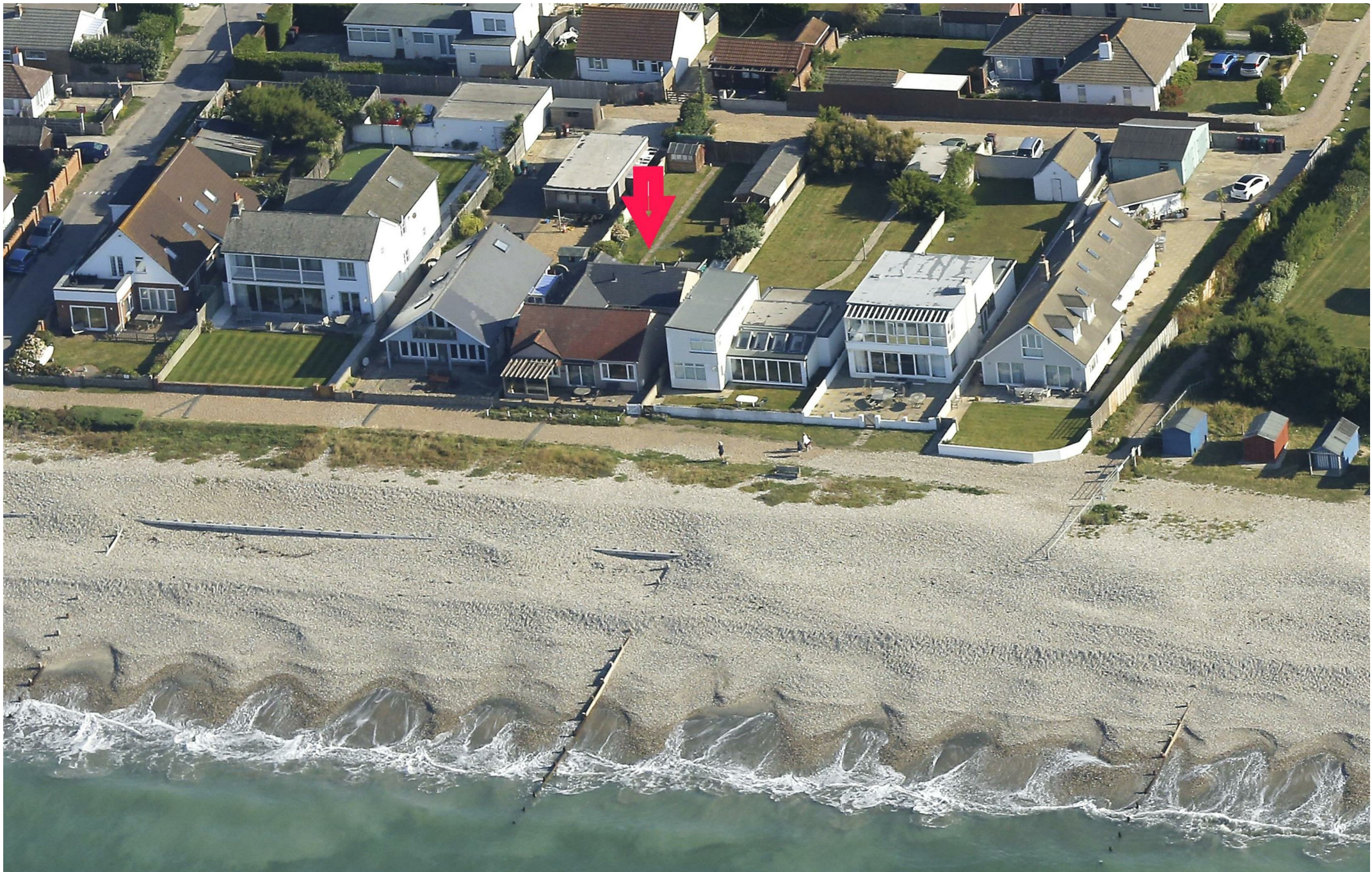
In addition there are four further good sized bedrooms - all with wardrobe cupboards.

The rear garden is extensive in size and principally laid to lawn with walled boundaries. plus a single garage with an attached garden store, plus ample off road parking for a number of cars to the rear with pedestrian and vehicular access from the private road in Nab Walk.

Viewing is highly recommended.



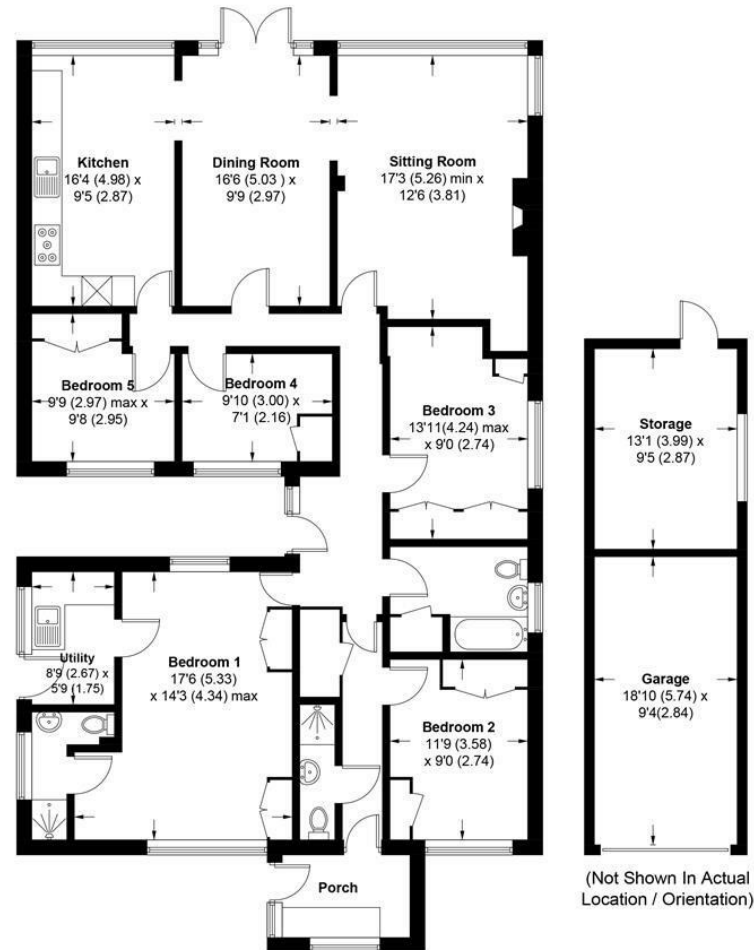








Whispers, Tamarisk Walk, PO20 8DQ
APPROXIMATE GROSS INTERNAL AREA = 1601 SQ FT / 148.7 SQ M
OUTBUILDINGS = 303 SQ FT / 28.2 SQ M
TOTAL = 1904 SQ FT / 176.9 SQ M



This plan is for layout guidance only. Not drawn to scale unless stated. Windows and door openings are approximate. Whilst every care is taken in the preparation of this plan, please check all dimensions, shapes and compass bearings before making any decisions reliant upon them. (ID1104471)

Produced for Baileys Estate Agents

Working in co-operation with the owners we have tried to be accurate and informative in the presentation of our property details. Baileys would advise that no representations or warranties are made or given in respect of the condition of any items mentioned in the Sales Particulars. If however, you are not sure about a particular point please contact us to verify the information. This is especially important if viewing the property involves travelling some distance.