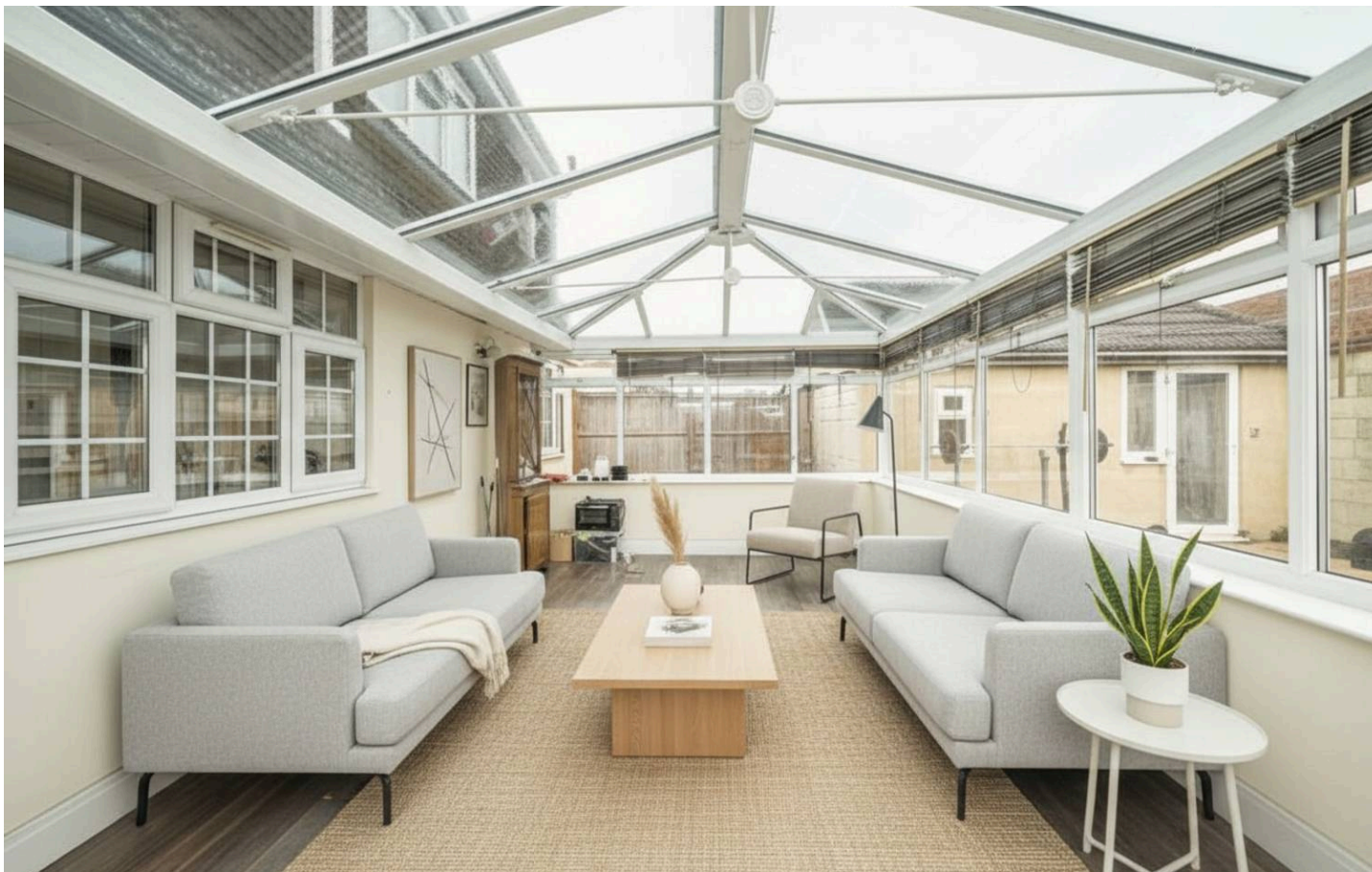




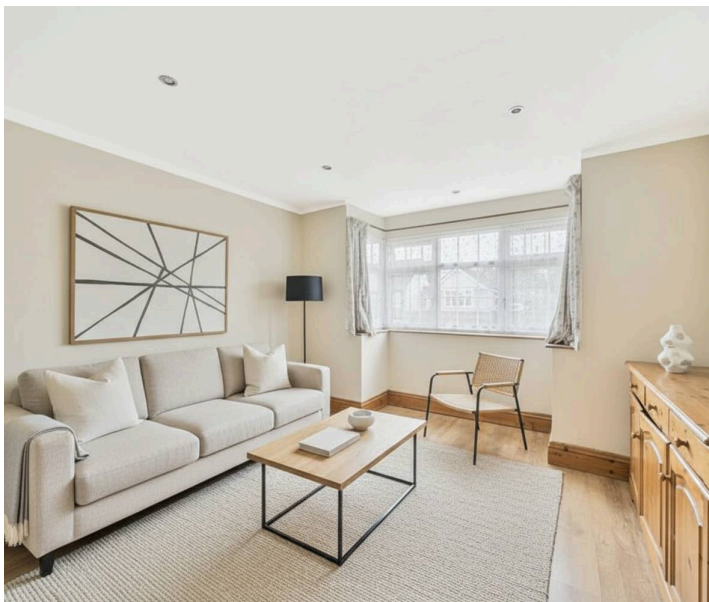
Herlwyn Avenue, Ruislip, HA4 6HP
Guide Price £675,000 | Freehold



Key Features & Description:

- Three bedroom, detached bungalow
- Open plan kitchen/lounge/dining room
- Three bathrooms
- Garage & own drive
- Well maintained rear garden
- Sought after location
- Conservatory

Welcome to this beautifully presented three-bedroom detached bungalow, offering stylish, well-planned living with space to relax and entertain. Thoughtfully decorated throughout, this home is ready for you to move straight in and enjoy. At the heart of the property is a spacious family kitchen and dining area, perfect for everyday living and hosting friends or family. From here, doors open into a bright conservatory, creating a seamless connection between indoor and outdoor living and overlooking the well-kept rear garden. The principal bedroom benefits from its own en-suite shower room, providing privacy and convenience, while the second bedroom on the first floor also features an en-suite, making it ideal for guests, older children, or a home office retreat. Outside, the attractive garden offers a patio area for outdoor dining and a lawned section ideal for relaxing or play. To the front, the property features a combination of paved and lawned space, providing off-street parking, complemented by a garage to the rear for additional storage or parking. This home is perfect for those seeking comfort, flexibility, and easy living in a well-maintained detached property.



Presented with care by Lawrence Rand - helping you find the place you'll love to call home.



Nearest Stations & Location:

Ruislip Tube Station – 0.4 miles

Ruislip Manor Tube Station – 0.5 miles

West Ruislip Station – 0.6 miles

Perfectly positioned just moments from Ruislip High Street with its trendy eateries, restaurants and transport connections

(Piccadilly/Metropolitan lines and Ruislip Gardens (Central Line/Br Connection).

Alternatively for the motorist the A40/Western Avenue is just a short drive away providing easy and direct access into Central London and the Home Counties. Within the catchment area of several highly regarded schools including Sacred Heart.

Additional Information:

Council Tax band: F

EPC Energy Efficiency Rating: E

Suppliers:

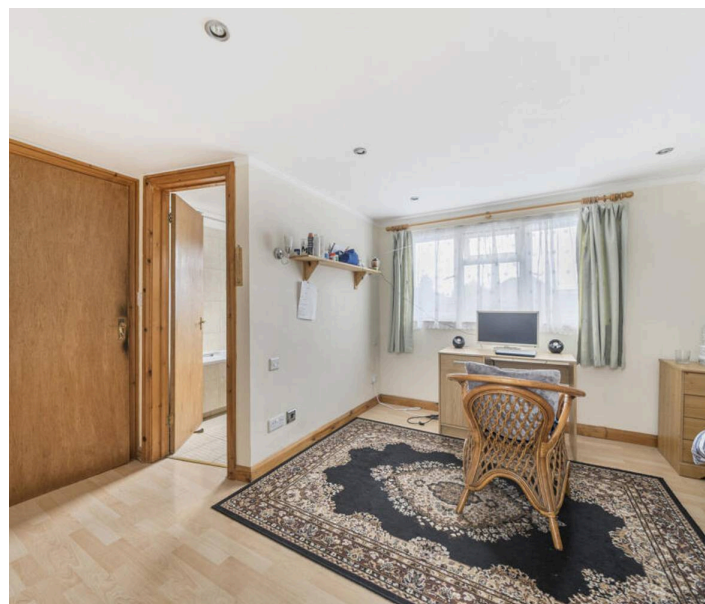
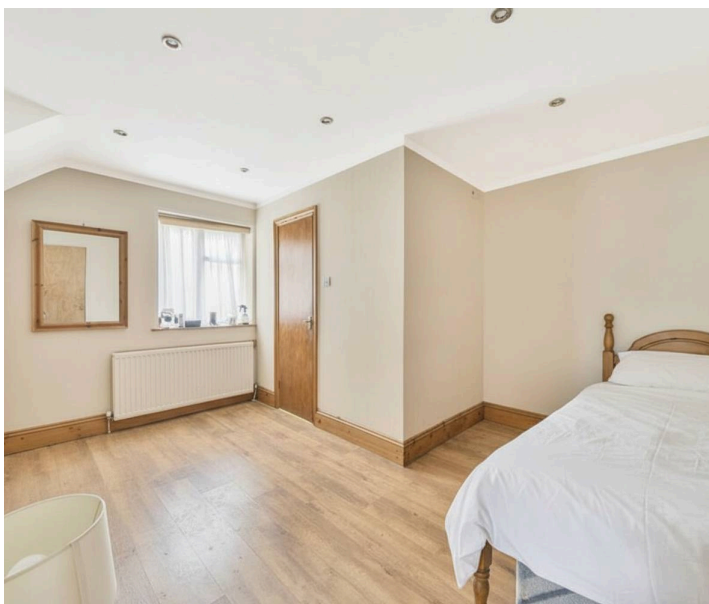
Electricity supply: Mains, Water supply: Mains water

Sewerage: Mains

Heating: Gas Central

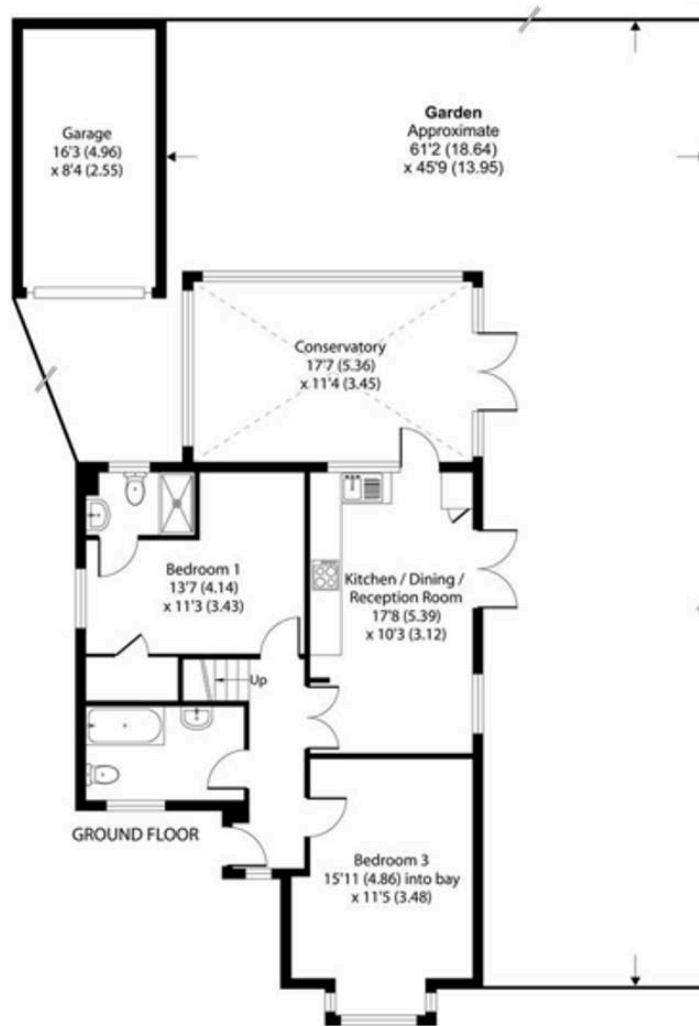
Broadband & mobile coverage:

Broadband: FTTP (Fibre to the Premises) Mobile coverage: O2 – Excellent, Vodafone – Excellent, Three – Excellent, EE Excellent



Herlwyn Avenue, Ruislip, HA4 6HP

Approximate Area = 1085 sq ft / 100.7 sq m
Garage = 136 sq ft / 12.6 sq m
Total = 1221 sq ft / 113.3 sq m
For identification only - Not to scale



Lawrence Rand

51 Victoria Road, Ruislip - HA4 9BH

01895 632211

Sales@lawrence-rand.co.uk

www.lawrence-rand.co.uk

Lawrence Rand Limited has made every reasonable effort to ensure the accuracy of the information provided. However, we accept no responsibility for errors, omissions, or misstatements. All measurements, distances, and descriptions are approximate and for guidance only. Prospective purchasers or tenants must verify all details independently. Some images may include AI-generated virtual staging to illustrate the potential of the property and are for visual guidance only. No warranty is given or implied, and these particulars do not form part of any offer or contract. Lawrence Rand reserves the right to amend or withdraw any property without notice.