

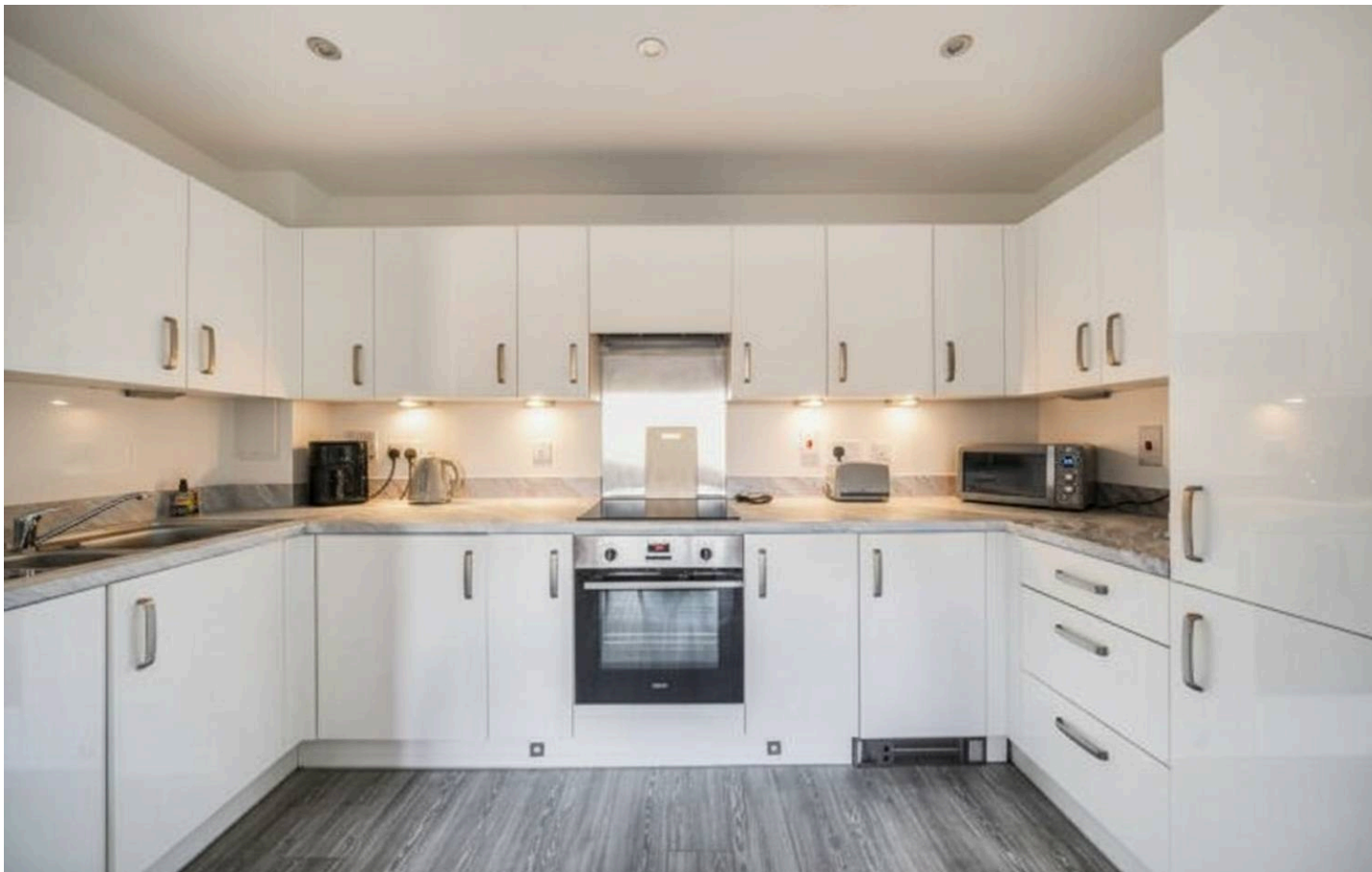


Bourne Court, South Ruislip, HA4 6ET

In Excess of **£335,000** | Leasehold



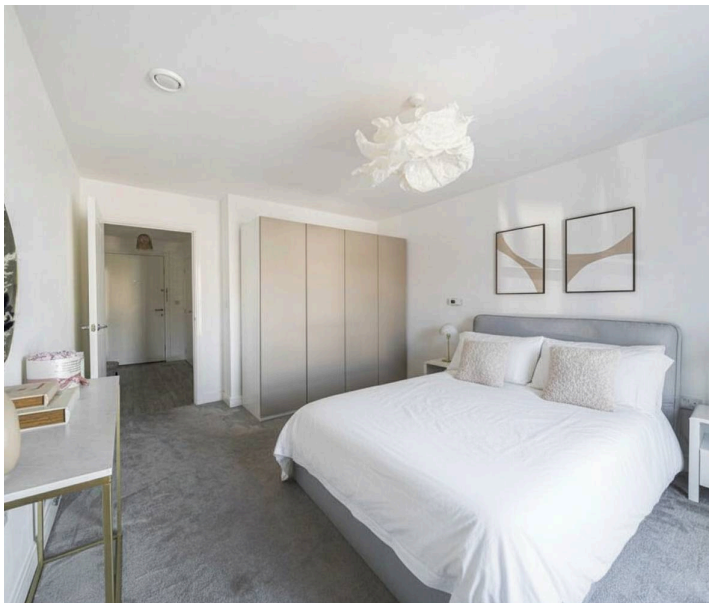
LAWRENCE RAND



Key Features & Description

- Prestigious development
- Excellent condition
- Large balcony
- Close to South Ruislip tube and mainline station

Welcome to this generously sized, high-specification one-bedroom apartment, constructed in 2022 and protected by the remainder of NHBC warranty. Located within the desirable Bourne Court development in South Ruislip, this modern first-floor home offers exceptional style, convenience and a long lease for complete peace of mind. Designed for contemporary living, the property features a bright and spacious open-plan kitchen and lounge, fitted with fully integrated appliances and sleek modern units. The living area flows seamlessly onto a large private balcony, perfect for relaxed mornings, evening unwinding, or entertaining friends. The large double bedroom enjoys excellent natural light, while the elegant bathroom has been finished to a high modern standard. Additional benefits include private gated parking, secure entry, and beautifully maintained communal spaces.



Presented with care by Lawrence Rand - helping you find the place you'll love to call home.



Nearest Stations

South Ruislip 0.09 miles

Ruislip Gardens (Tube – Piccadilly Line) 0.5 miles

Ruislip Manor (Tube – Metropolitan/Piccadilly) 1.3 miles

Additional Information

Council Tax band: C

Tenure: Leasehold, 119 years remaining

Service Charge £1150pa

EPC Energy Efficiency Rating: B

Suppliers

Electricity supply: Mains,

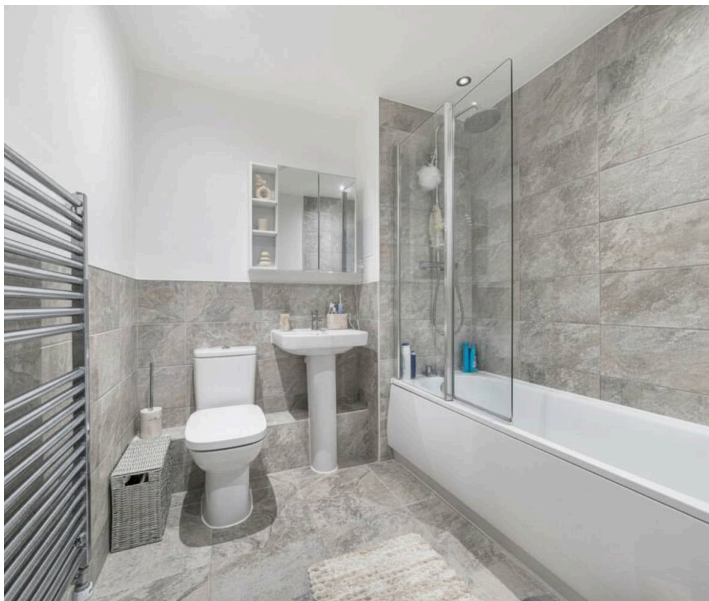
Water supply: Mains water

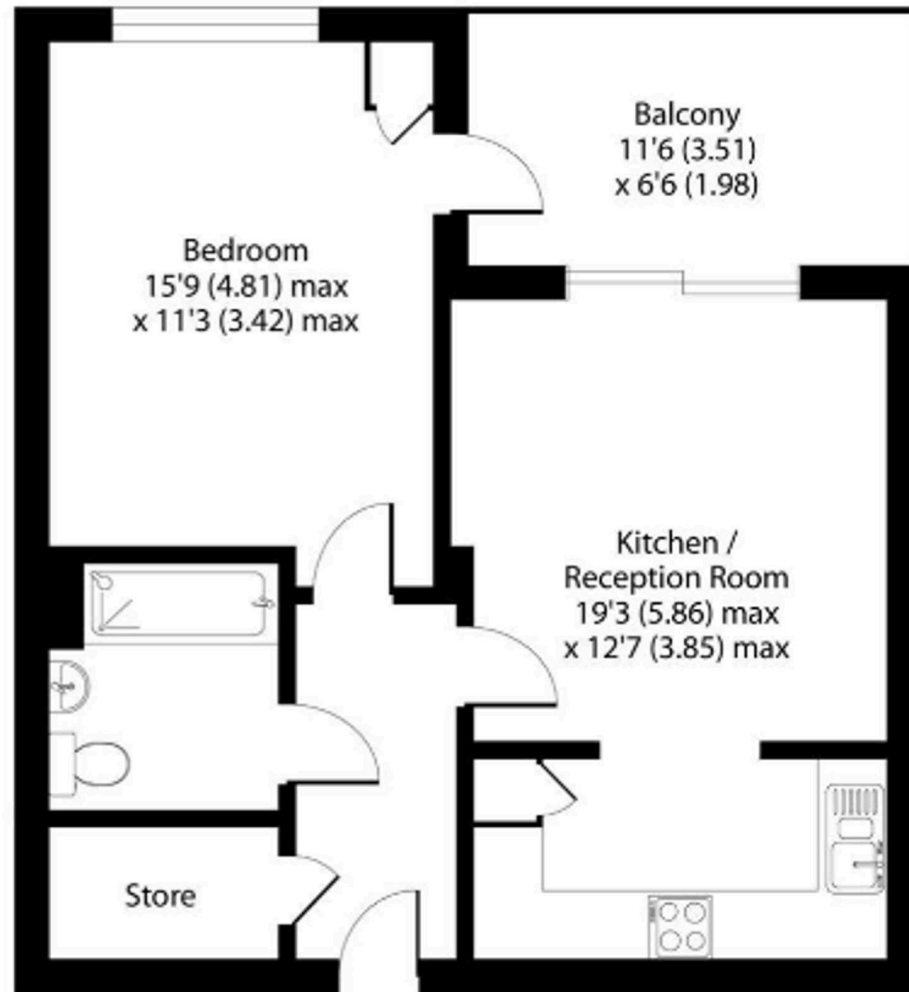
Sewerage: Mains

Heating: Gas Central

Broadband & mobile coverage

Broadband: FTTP (Fibre to the Premises) Mobile coverage: O2 – Excellent, Vodafone – Excellent, Three – Excellent, EE Excellent





Lawrence Rand

51 Victoria Road, Ruislip - HA4 9BH

01895 632211

Sales@lawrence-rand.co.uk

www.lawrence-rand.co.uk

Lawrence Rand Limited has made every reasonable effort to ensure the accuracy of the information provided. However, we accept no responsibility for errors, omissions, or misstatements. All measurements, distances, and descriptions are approximate and for guidance only. Prospective purchasers or tenants must verify all details independently. Some images may include AI-generated virtual staging to illustrate the potential of the property and are for visual guidance only. No warranty is given or implied, and these particulars do not form part of any offer or contract. Lawrence Rand reserves the right to amend or withdraw any property without notice.