



Acacia Avenue, Ruislip, HA4 8RQ

In Excess of £400,000 | Leasehold



LAWRENCE RAND



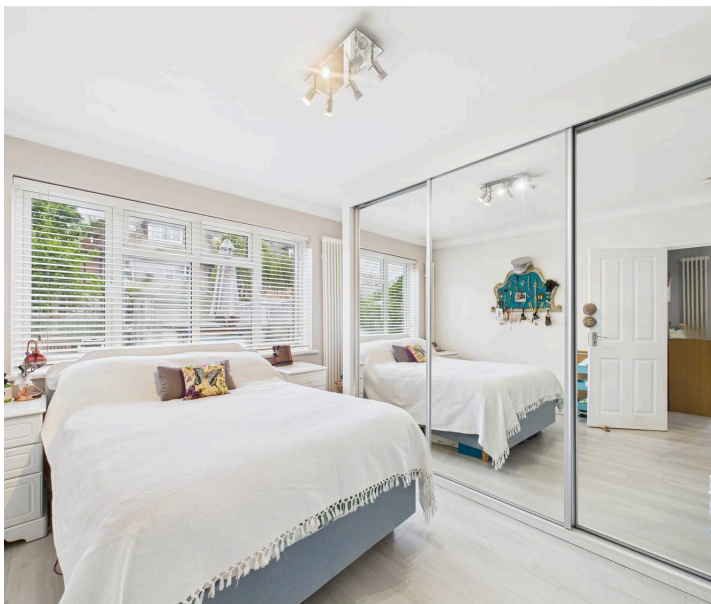
Key Features & Description:

- Immaculate ground floor two bedroom maisonette
- Modern kitchen
- Bathroom
- Private rear garden & own private entrance
- Off street parking for two cars
- Walking distance to Ruislip Manor high street and Eastcote high street

An immaculate ground floor two bedroom maisonette located on a sought after road. With generous size living accommodation this property has a modern fitted kitchen, a light and bright living room with French doors opening to the front of the property, two well-appointed bedrooms with the master bedroom boasting fitted sliding wardrobes. A fresh fully tiled bathroom with a white three piece suite completes this property. Further benefits include a private rear garden and off street parking for two cars ensuring ease and convenience for residents.

Presented with care by Lawrence Rand – helping you find the place you'll love to call home





Acacia Avenue is a quiet residential road close to the local amenities of Ruislip Manor and Eastcote with an array of shops, cafes, restaurant's and good transport. (Metropolitan/Piccadilly line) For the motorist the A40/Western Avenue is just a short drive providing swift access into Central London and the surrounding Home Counties. The property also falls within the catchment area of some of the areas highly regarded schools.

Verified Information:

Council tax band: C

Local authority: London Borough of Hillingdon

Lease length: 160 years

Ground rent: Peppercorn

Parking: Off street

Suppliers:

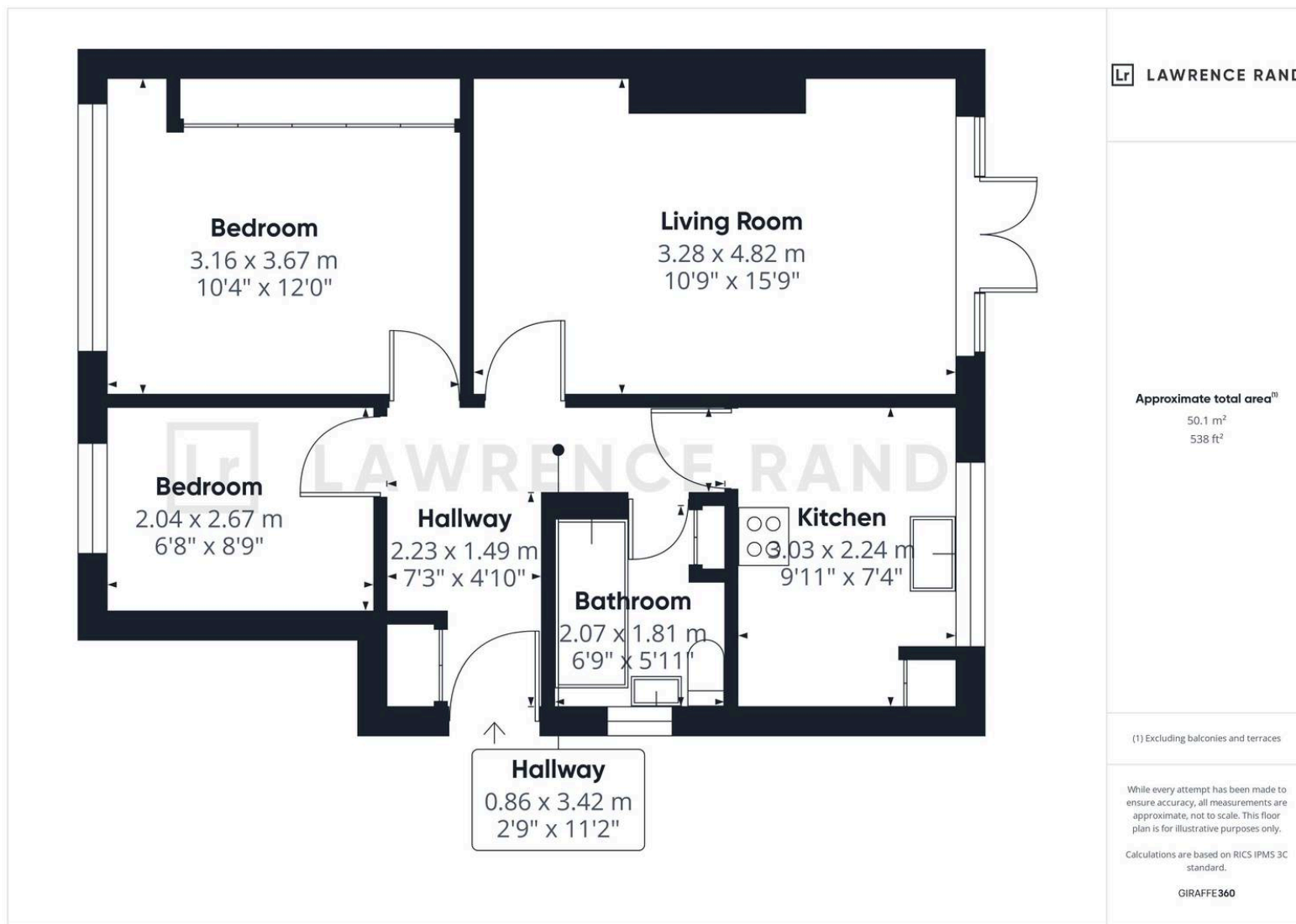
Electricity supply: Mains, Water supply: Mains
water, Sewerage: Mains

Heating: Gas central heating

Broadband & mobile coverage:

Broadband: FTTP (Fibre to the Premises)

Mobile coverage: O2 - Excellent, Vodafone -
Excellent, Three - Excellent, EE - Excellent



Lawrence Rand

51 Victoria Road, Ruislip - HA4 9BH

01895 632211

Sales@lawrence-rand.co.uk

www.lawrence-rand.co.uk

Lawrence Rand Limited has made every reasonable effort to ensure the accuracy of the information provided. However, we accept no responsibility for errors, omissions, or misstatements. All measurements, distances, and descriptions are approximate and for guidance only. Prospective purchasers or tenants must verify all details independently. Some images may include AI-generated virtual staging to illustrate the potential of the property and are for visual guidance only. No warranty is given or implied, and these particulars do not form part of any offer or contract. Lawrence Rand reserves the right to amend or withdraw any property without notice.