



LAWRENCE RAND

127 Pavilion Way, Ruislip

In Excess of £650,000

127 Pavilion Way

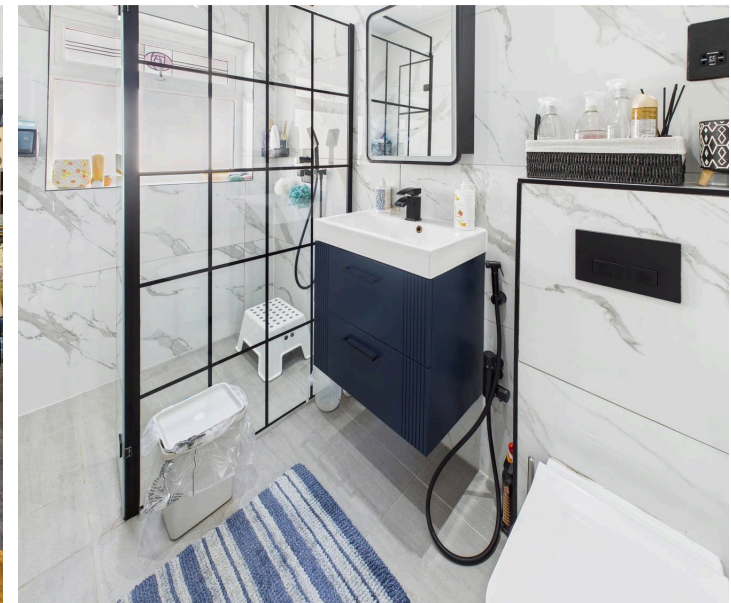
Ruislip, Ruislip

- Three bedroom extended semi detached bungalow
- Master bedroom with ensuite shower room & utility area
- Family bathroom
- Separate kitchen
- Low maintenance garden
- Driveway for two cars
- Sought after road
- Garage

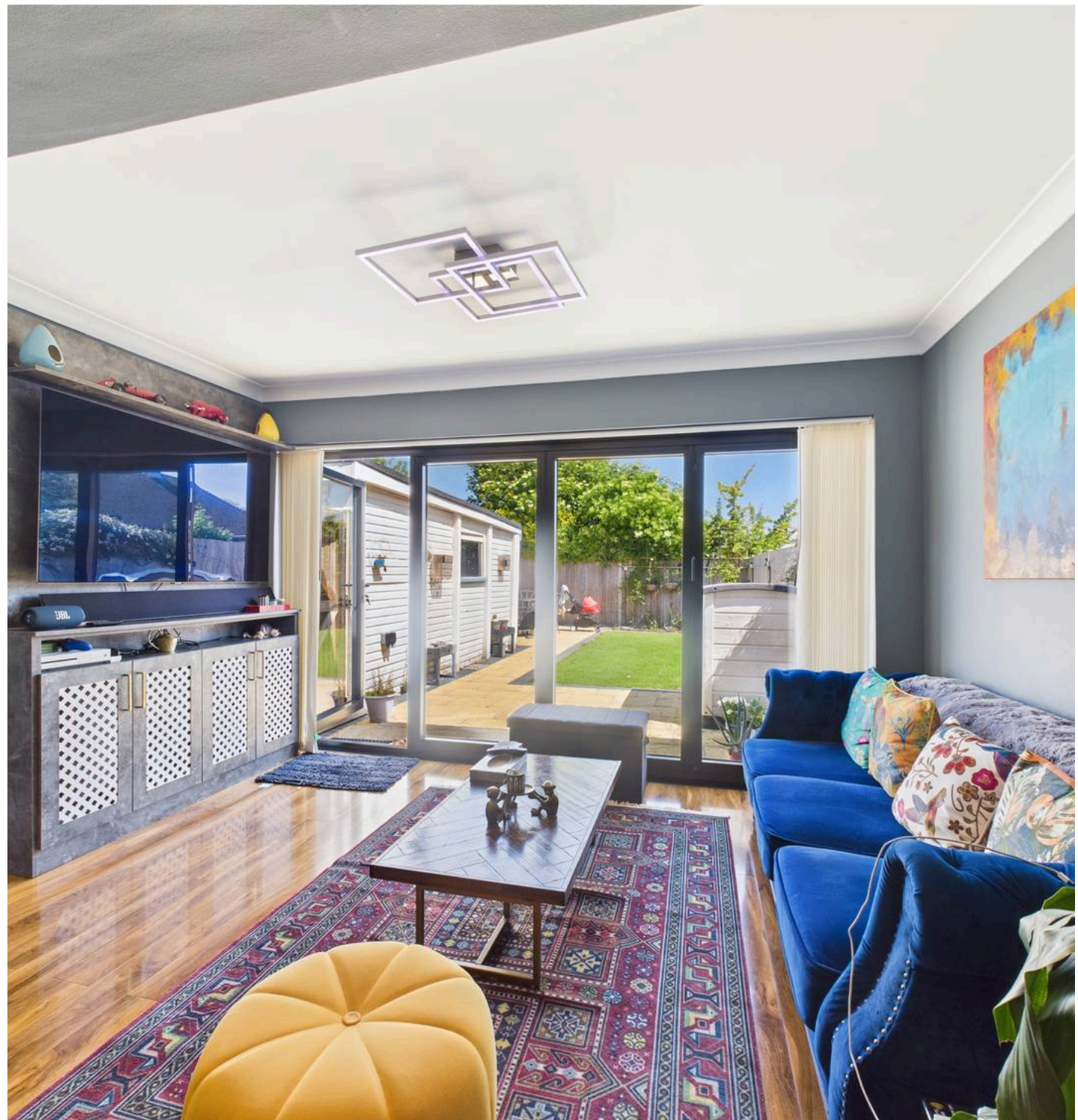
This beautifully presented three-bedroom, two bathroom extended semi detached bungalow, tastefully designed and decorated throughout to create stylish, outstanding living accommodation. In one of the area's most popular roads close to sought after schools, transport links and shops.

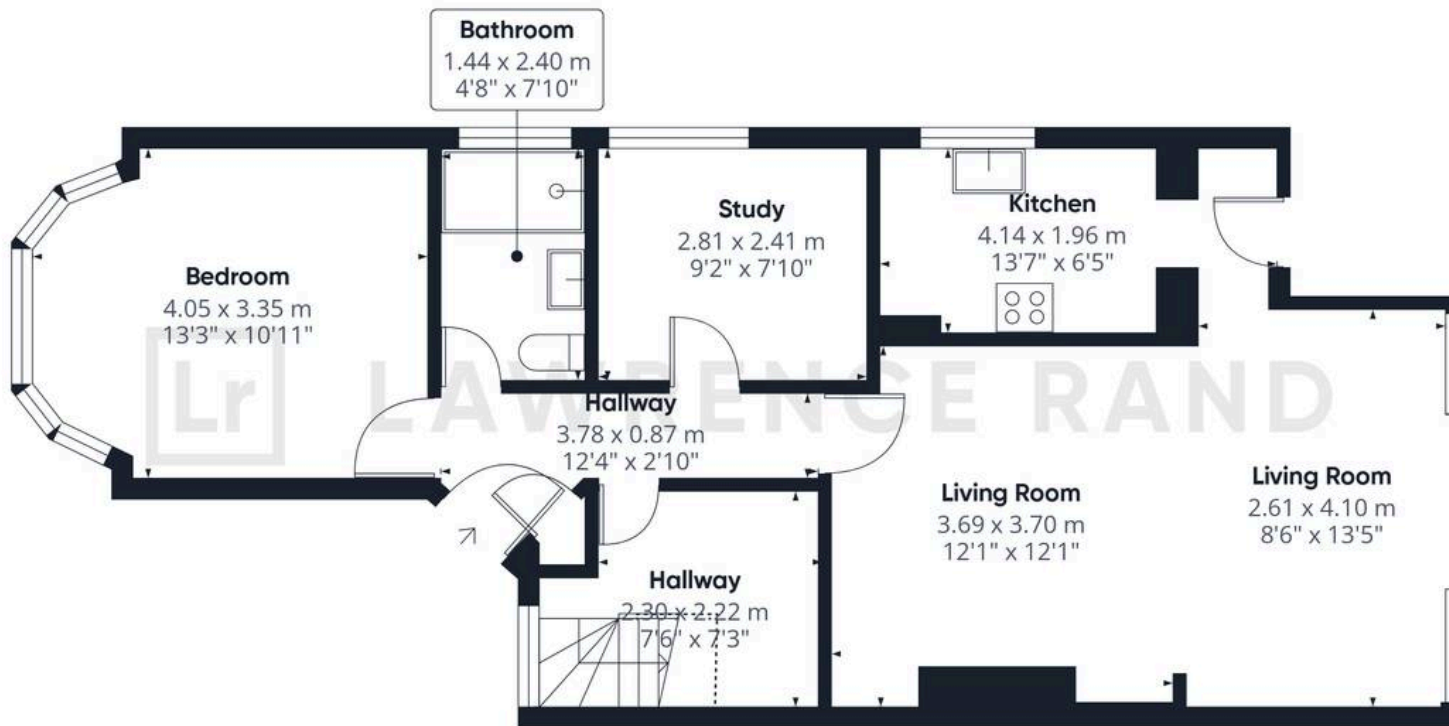
Once inside the welcoming hallway doors to lead to all rooms and stairs lead to the first floor where you will find a spacious master bedroom boasting an ensuite shower room with utility area. The well equipped kitchen has wall and base units, ample work surfaces and space for appliances. The lounge/dining room flows effortlessly from the kitchen and benefits from built in wall storage and bifold doors open out to a well-maintained low maintenance garden. The second bedroom has bespoke fitted wardrobes while the third bedroom could also be used as a home office or children's play room. Completing the ground floor is a fresh family bathroom.

The garden is designed with low maintenance in mind, and has a block paved patio and a small Astro turfed area. The frontage offers off street

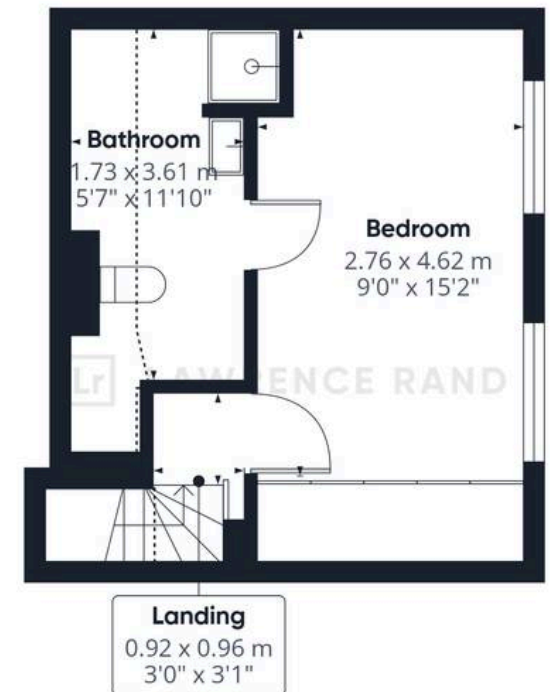


You can include any text here. The text can be modified upon generating your brochure.





Ground Floor



Floor 1



Lawrence Rand

51 Victoria Road, Ruislip - HA4 9BH

01895 632211 • Info@lawrence-rand.co.uk • www.lawrence-rand.co.uk/