

Old Hatch Manor Ruislip

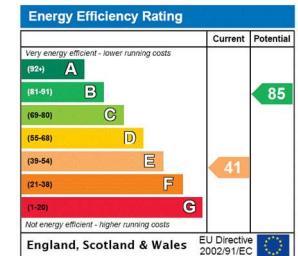




Old Hatch Manor

Ruislip

£825,000



Key features

- Attractive family home
- Detached house
- Two bedrooms
- Two reception rooms
- Lovely rear garden
- Scope to extend (STPP)
- Off street parking

Scan here for an instant
report on your home



Property details

Located on a prestigious road in Ruislip is this attractive two bedroom cottage -style detached house with generous front and rear gardens.

Located on a generous corner plot with potential for development, the approach to this property is very pretty, with entry via a wrought iron gate to the front door. Once inside, the welcoming entrance hallway offers stairs to the first floor and storage. The lounge with the large bay window is light and spacious and features a fire and fire surround. The kitchen which incorporates the dining room is neatly appointed with French doors overlooking the large rear garden.

Upstairs, are two double bedrooms and a family bathroom.

Outside, the rear garden has a large patio and lawned area, surrounded by mature trees. There is

ample storage in the garden afforded by three garden sheds. The front garden is lawned bordered by bushes and shrubs and pathways.

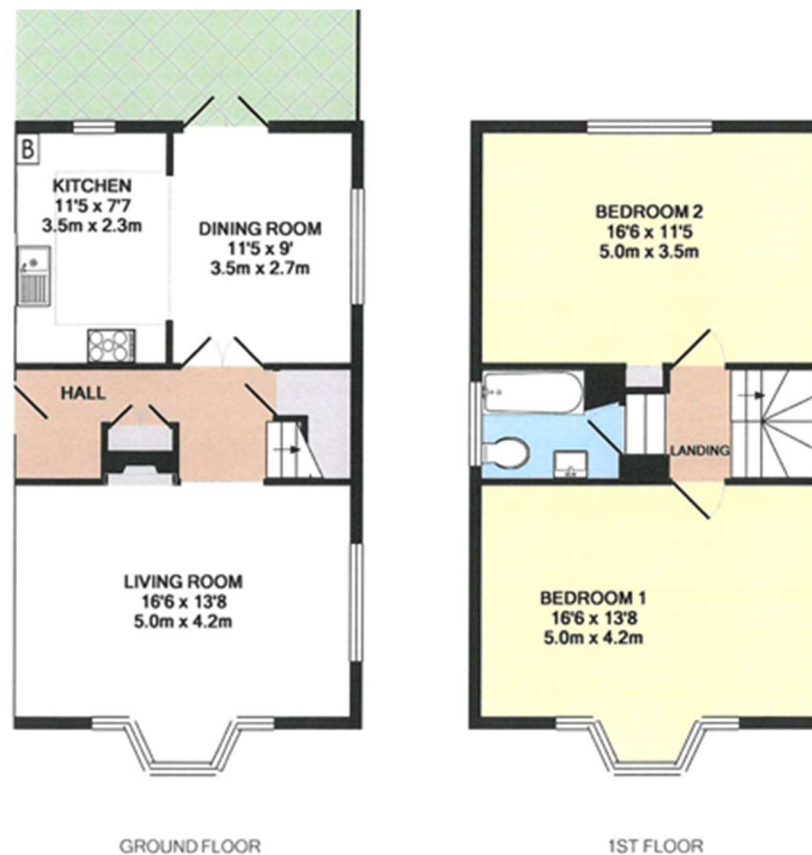
Old Hatch Manor is a quiet residential road within close proximity to both Ruislip Manor and Ruislip High Streets with their array of good shops, including Marks & Spencer food hall, Waitrose and Tesco Express. Ruislip Manor tube is walking distance with the Metropolitan/Piccadilly line offering swift access into Central London. This delightful property is ideal for families with reputable local schools, parks and Highgrove Leisure centre offering various opportunities.

London Borough of Hillingdon
Council Tax Band: F (ref: 669400300)

01895 632211
lawrence-rand.co.uk



Floorplan



TOTAL APPROX. FLOOR AREA 1012 SQ.FT. (94.0 SQ.M.)

Whilst every attempt has been made to ensure the accuracy of the floor plan contained here, measurements of doors, windows, rooms and any other items are approximate and no responsibility is taken for any error, omission, or mis-statement. This plan is for illustrative purposes only and should be used as such by any prospective purchaser. The services, systems and appliances shown have not been tested and no guarantee as to their operability or efficiency can be given

Made with Metopix ©2015

Scan here for an instant
report on your home

