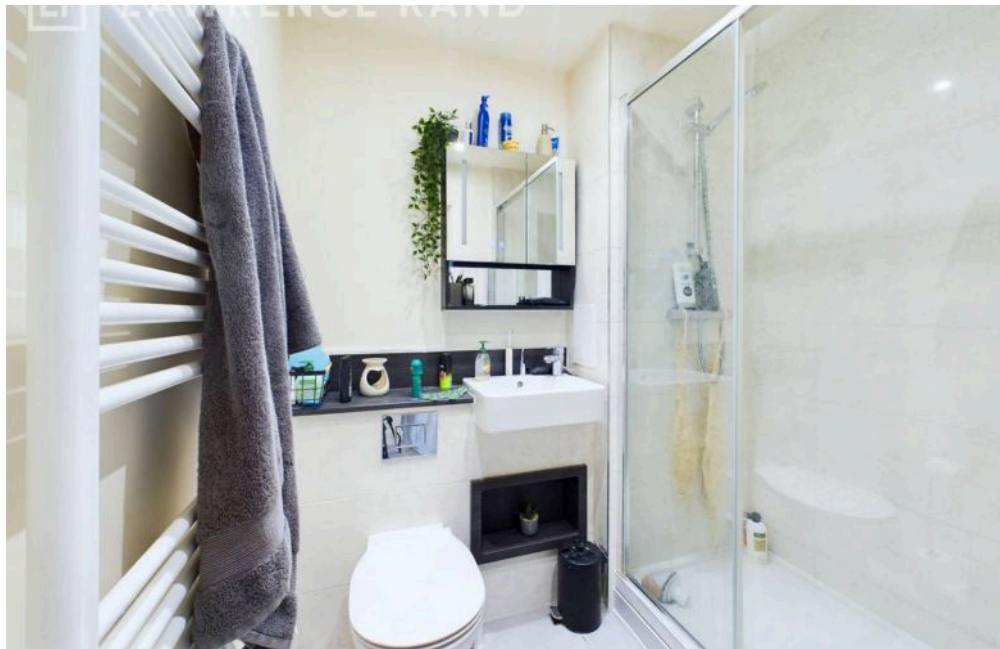


Penrose Apts Hargrave Drive, Harrow

£425,000 Leasehold

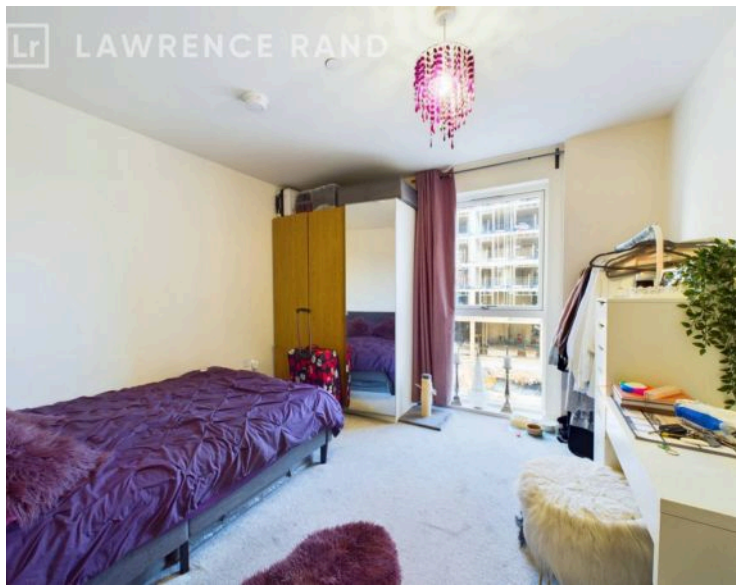
Two bedroom upper floor apartment • Open plan kitchen/lounge/diner • Two bathrooms • Balcony • Secure video entry • Lifts to all floors • Close to Harrow town centre and Harrow Weald

This well presented two double bedroom, upper floor apartment is in good condition throughout. Located in the sought after Eastman Village development close proximity to Harrow town centre and its fantastic range of transport links. A modern open plan kitchen/lounge/dinner, perfect for cooking, dining and relaxing with the added benefit of a balcony enjoying views of the development and surrounds. Both bedroom are generous, comfortable doubles with the master boasting its own ensuite shower room. Completing this apartment is a modern bathroom.



Located in the sought after Eastman Village development close proximity to Harrow town centre and its fantastic range of transport links





Verified Material Information:

Council tax band: D, Yearly charge £2286.32, London Borough of Harrow,

Lease length: 992 years

Property construction: Standard form

Energy Performance rating: B

Electricity supply: Mains electricity

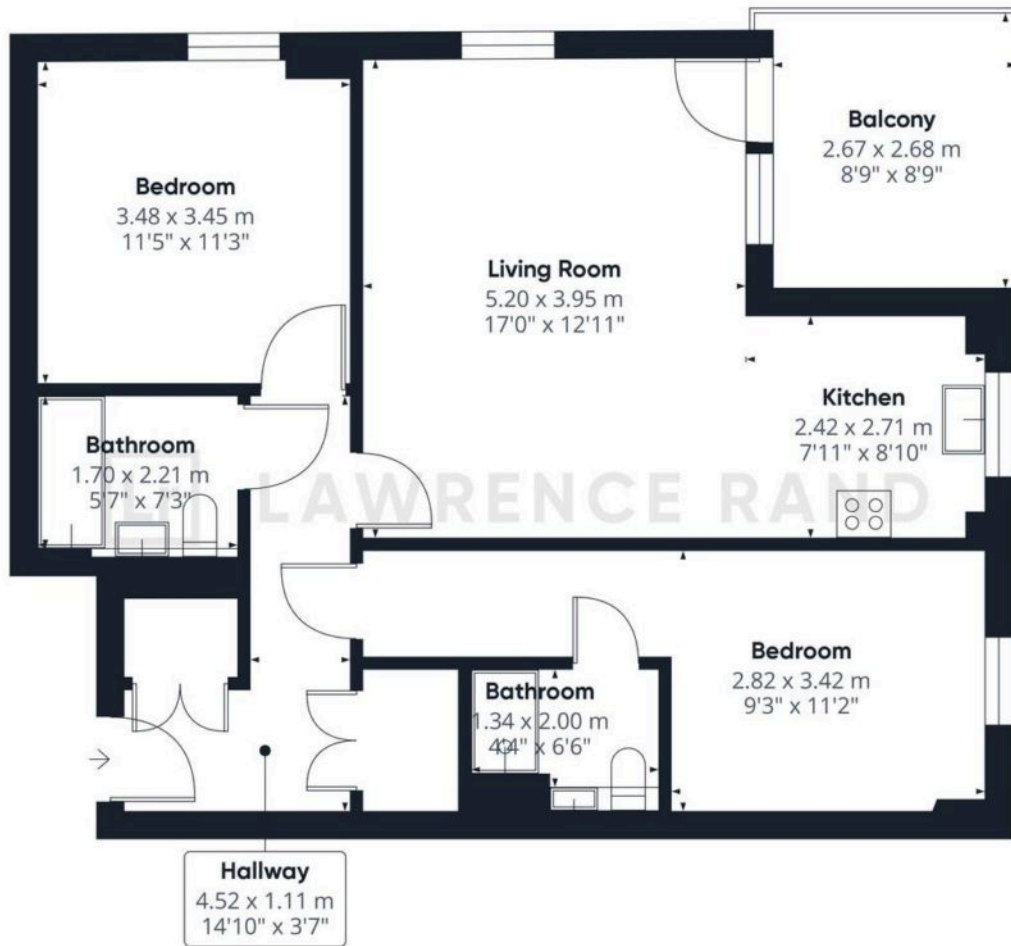
Water supply: Mains water supply, Sewerage: Mains

Heating: Electric

Broadband: FTTP (Fibre to the Premises) Mobile coverage: O2 - Excellent, Vodafone - Excellent, Three - Excellent, EE - Excellent

All information is provided without warranty. Contains HM Land Registry data © Crown copyright and database right 2021. This data is licensed under the Open Government Licence v3.0.

The information contained is intended to help you decide whether the property is suitable for you. You should verify any answers which are important to you with your property lawyer or surveyor or ask for quotes from the appropriate trade experts: builder, plumber, electrician, damp, and timber expert.



You can include any text here. The text can be modified upon generating your brochure.