



LAWRENCE RAND

36 Bournemead Avenue, Northolt

In Excess of **£350,000**

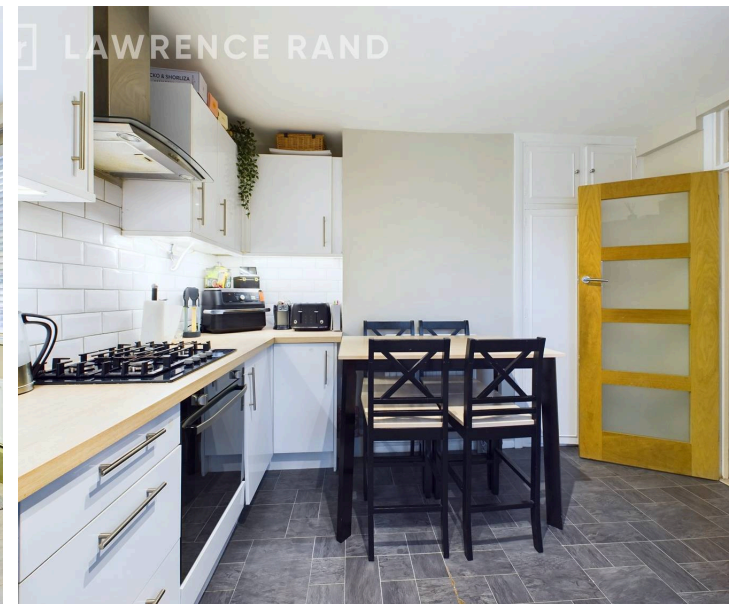
36 Bournemead Avenue

Northolt, Northolt

- Two bedroom maisonette
- Ground floor
- Own private entrance
- Large private south facing rear garden
- Driveway for four cars
- Modern kitchen & bathroom
- Close proximity to popular schools

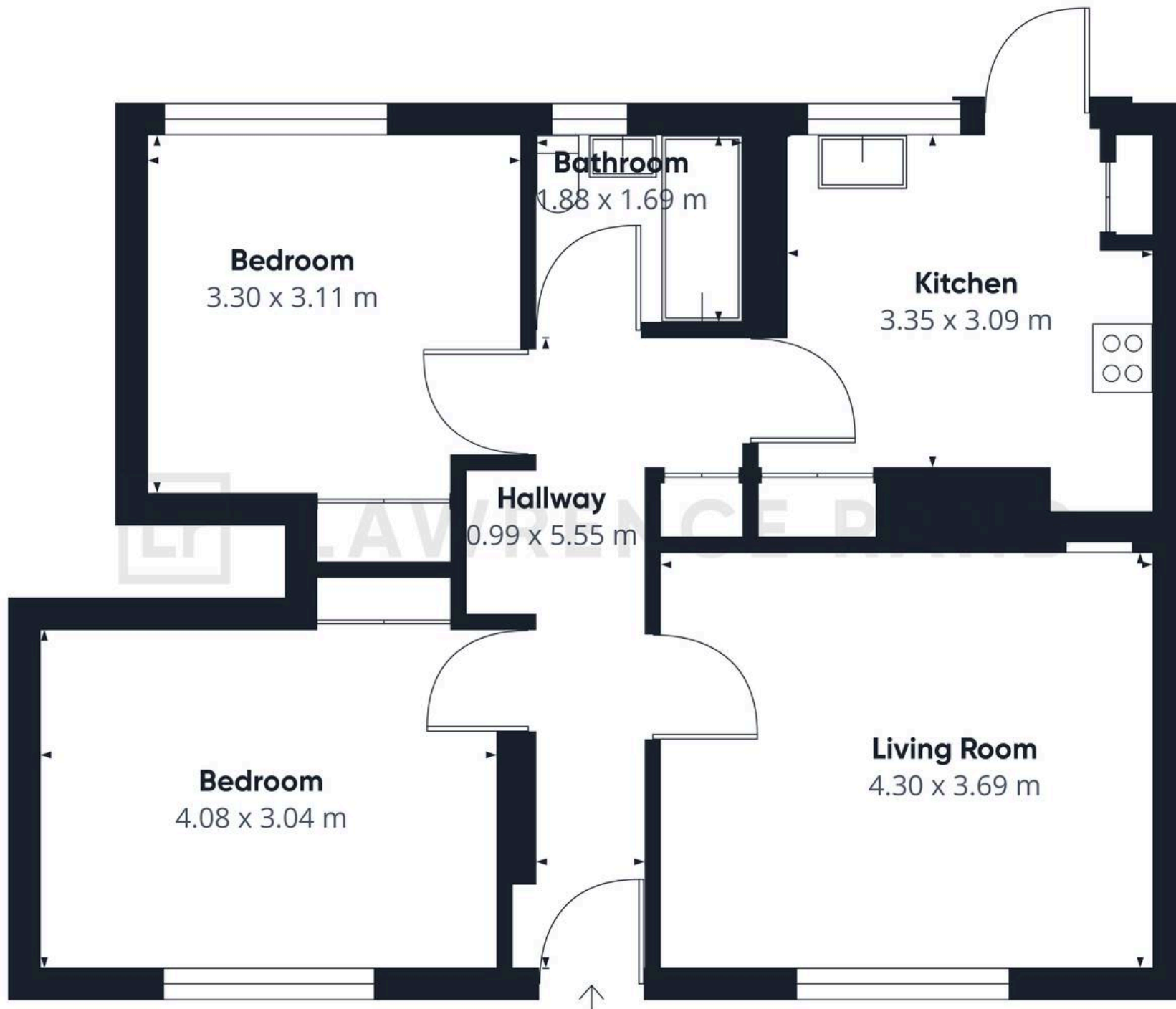
The property has its own private entrance and a driveway offering parking for four cars. The living room has attractive wood flooring and is bright and spacious decorated in soft neutral tones. The kitchen has wall and base units, ample work surfaces pace for appliances as well as a table and chairs. Both bedrooms are generously sized with the master bedroom boasting fitted wardrobes. A fresh modern bathroom with a three-piece suite completes this lovely property.

The south facing rear garden is designed with low maintenance in mind with a paved patio area and a large grassed area.



You can include any text here. The text can be modified upon generating your brochure.







Lawrence Rand

51 Victoria Road, Ruislip - HA4 9BH

01895 632211 • Info@lawrence-rand.co.uk • www.lawrence-rand.co.uk/