



**LAWRENCE RAND**

**Brookside Field End, Ruislip**

Offers in excess of **£800,000**



# Brookside Field End

Ruislip, Ruislip

- Double Garage
- Detached
- 2 bathrooms
- Overlooking greenbelt land
- Opportunity for investors to re develop
- Potential building plot measuring 22m width X 21m deep

Nestled away on a secluded private road the property has stunning, picturesque view to the left and rear. This delightful, detached two double bedroom bungalow providing over 900sqft of living accommodation. This substantial plot (22m X 21m) would be an ideal investment opportunity for those seeking to re develop this site with an impressive new scheme subject to planning permission.

(No option agreement is available at vendors request)

Viewings easily arranged however strictly by appointment only.

Location:

The property is conveniently located, just a few minute's walk from South Ruislip Central/Mainline station and the local shops, as well as Sainsburys, Asda and the 'Old Dairy' complex. The A40/M40, M25 road network is just a couple of minute's drive from the property, providing quick access to London and the Home Counties. There are a number of well-regarded schools including St Swithun Wells & Queensmead.

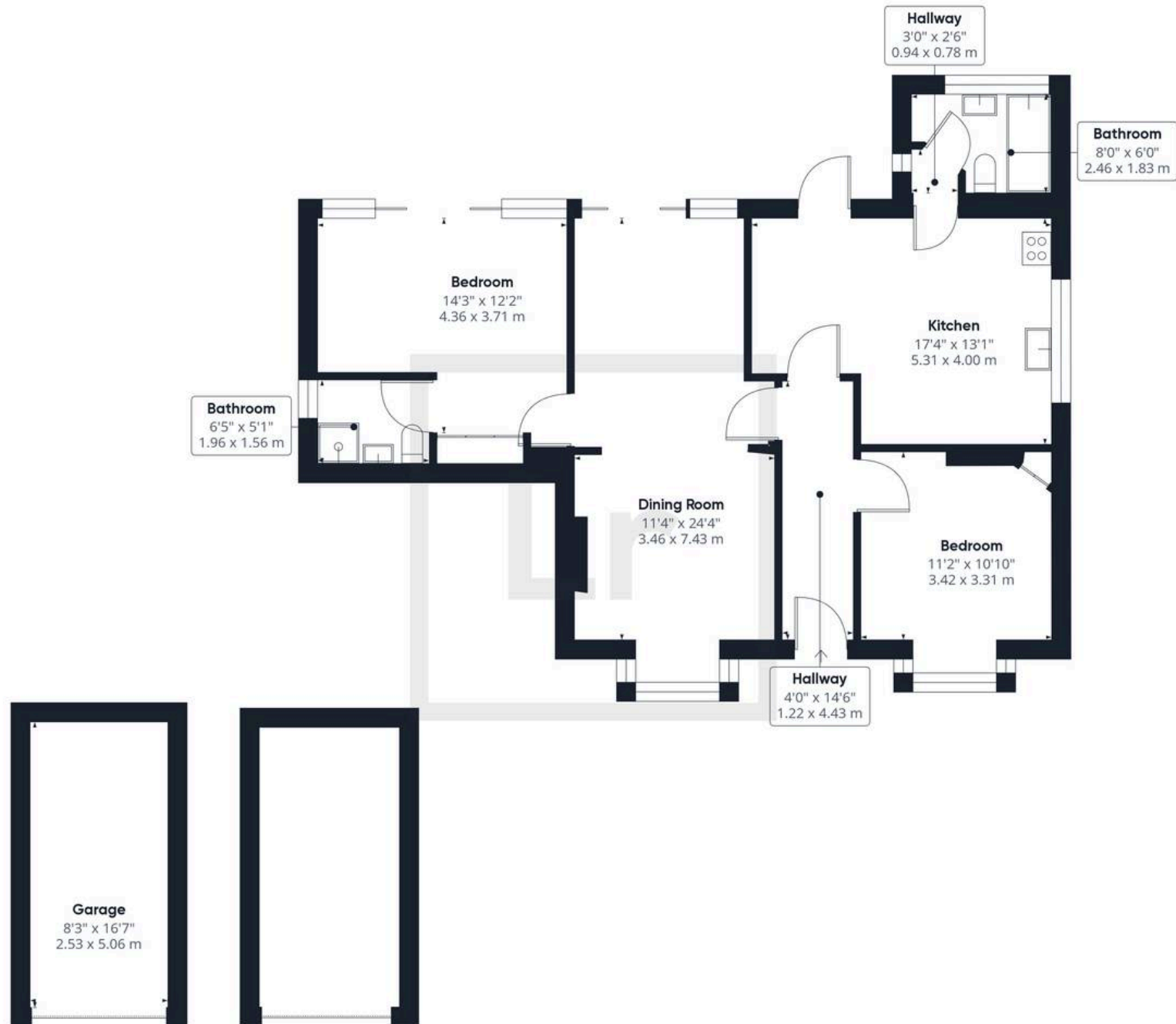
Verified Material Information:

London Borough of Hillingdon













## Lawrence Rand

51 Victoria Road, Ruislip - HA4 9BH

01895 632211 • [Info@lawrence-rand.co.uk](mailto:Info@lawrence-rand.co.uk) • [www.lawrence-rand.co.uk/](http://www.lawrence-rand.co.uk/)