



91 Parkfield Crescent, Ruislip

Ruislip

£600,000

Lr LAWRENCE RAND

91 Parkfield Crescent

Ruislip, Ruislip

An extended three bedroom semi-detached house situated on this quiet residential road in South Ruislip.

Council Tax band: E

Tenure: Freehold

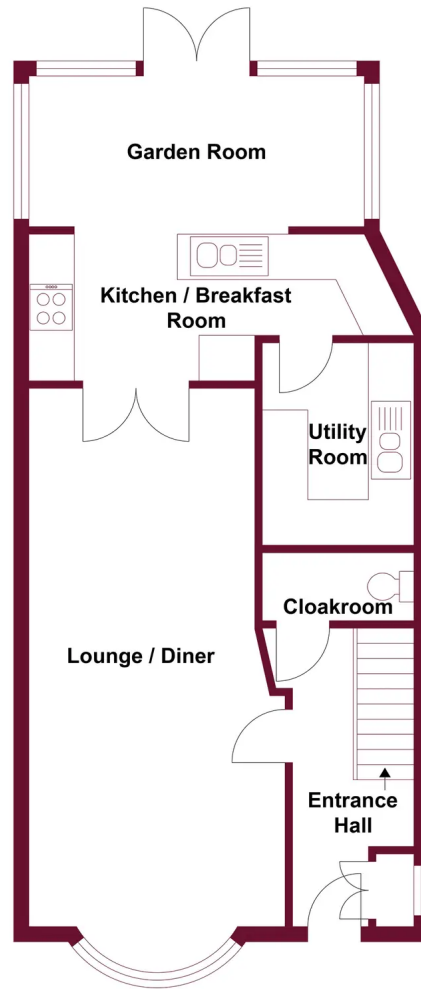
EPC Energy Efficiency Rating: D

EPC Environmental Impact Rating: E

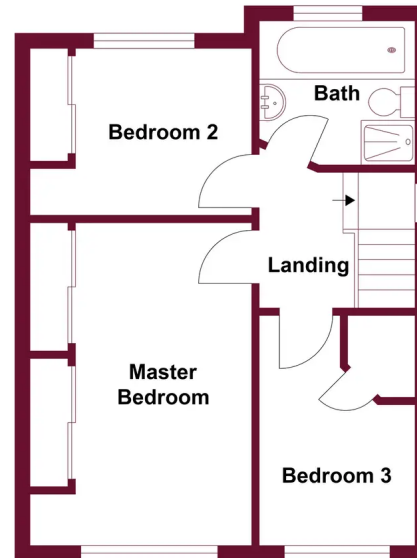
- Three bedroom semi
- Extended
- Utility room
- Conservatory
- Off street parking
- Quiet road







Ground Floor



First Floor

This floor plan is for illustrative purposes and layout guidance only. It is not drawn to scale. Dimensions should not be used for carpet or flooring sizes and are not intended to form part of any contract.



Lawrence Rand

Lawrence Rand, 106 Victoria Road - HA4 0AL

01895 632211

Info@lawrence-rand.co.uk

www.lawrence-rand.co.uk/



LAWRENCE RAND