



25 Tiptree Road, Ruislip  
Ruislip

£630,000

**Lr** LAWRENCE RAND

# 25 Tiptree Road

Ruislip, Ruislip

A four-bedroom three shower-room house which has been refurbished throughout is situated in this quiet residential road close to South Ruislip's amenities.

Council Tax band: D

Tenure: Freehold

EPC Energy Efficiency Rating: E

EPC Environmental Impact Rating: F

- Four bedrooms
- Three shower-rooms
- Refurbished throughout
- Cul-de-sac location
- Close to shops and amenities





 LAWRENCE RAND



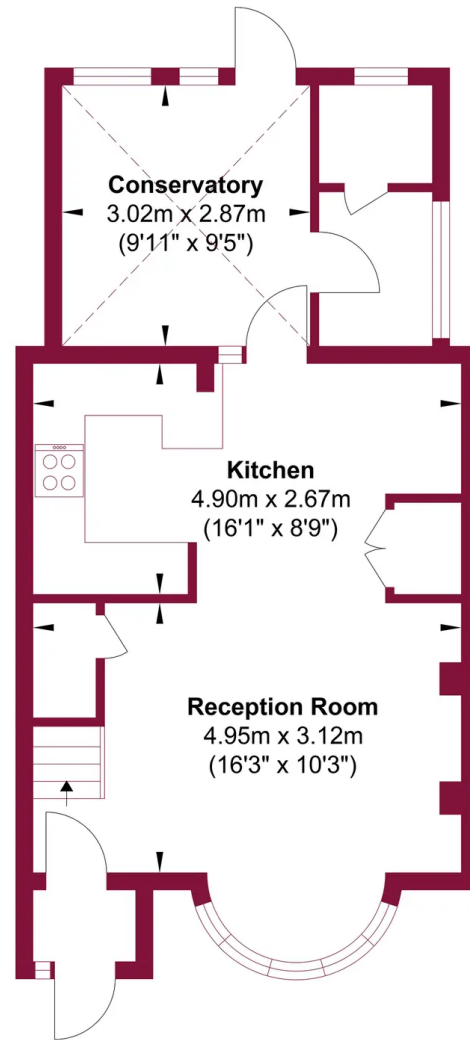
 LAWRENCE RAND



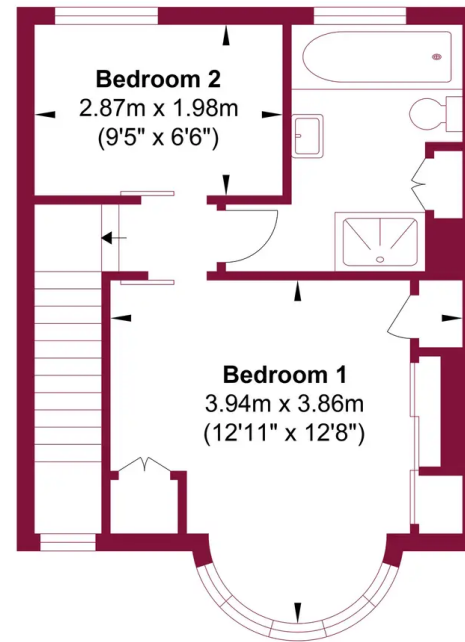
 LAWRENCE RAND



 LAWRENCE RAND



**Ground Floor**



**First Floor**

This floor plan is for illustrative purposes and layout guidance only. It is not drawn to scale. Dimensions should not be used for carpet or flooring sizes and are not intended to form part of any contract.



## Lawrence Rand

Lawrence Rand, 106 Victoria Road - HA4 0AL

01895 632211

[Info@lawrence-rand.co.uk](mailto:Info@lawrence-rand.co.uk)

[www.lawrence-rand.co.uk/](http://www.lawrence-rand.co.uk/)

