



3 Swallow Court Dollis Crescent, Ruislip

Ruislip

£340,000

Lr LAWRENCE RAND

3 Swallow Court Dollis Crescent

Ruislip, Ruislip

A two bedroom ground-floor maisonette set in this quiet cul-de-sac in close proximity to Eastcote's multiple shopping and transport amenities.

Council Tax band: D

Tenure: Leasehold

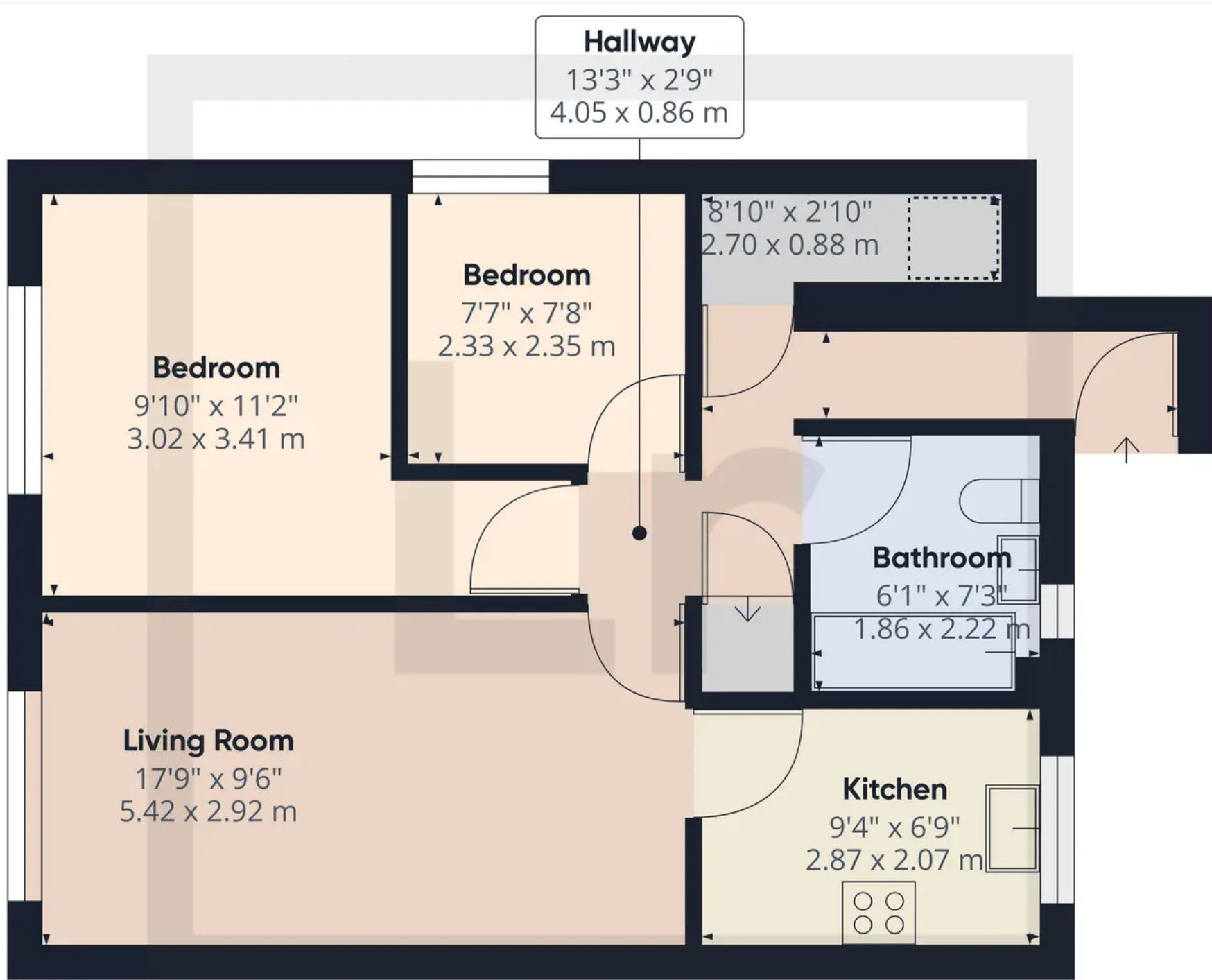
EPC Energy Efficiency Rating: C

EPC Environmental Impact Rating: C

- Two bedrooms
- Ground floor maionette
- Large kitchen
- Parking
- Own entrance
- Large communal garden
- Close to Eastcote
- Cul-de-sac







Approximate total area⁽¹⁾
569.56 ft²
52.91 m²

Reduced headroom
7.24 ft²
0.67 m²

(1) Excluding balconies and terraces

Reduced headroom (below 1.5m/4.92ft)

While every attempt has been made to ensure accuracy, all measurements are approximate, not to scale. This floor plan is for illustrative purposes only.



Lawrence Rand

Lawrence Rand, 106 Victoria Road - HA4 0AL

01895 632211

Info@lawrence-rand.co.uk

www.lawrence-rand.co.uk/



LAWRENCE RAND