



Kenilworth Avenue, Harrow

£440,000

Harrow



LAWRENCE RAND

Kenilworth Avenue

Harrow, Harrow

Two bedroom house presented in good condition throughout with off street parking and large rear garden and no onward chain.

Council Tax band: D

Tenure: Freehold

EPC Energy Efficiency Rating: D

EPC Environmental Impact Rating: D

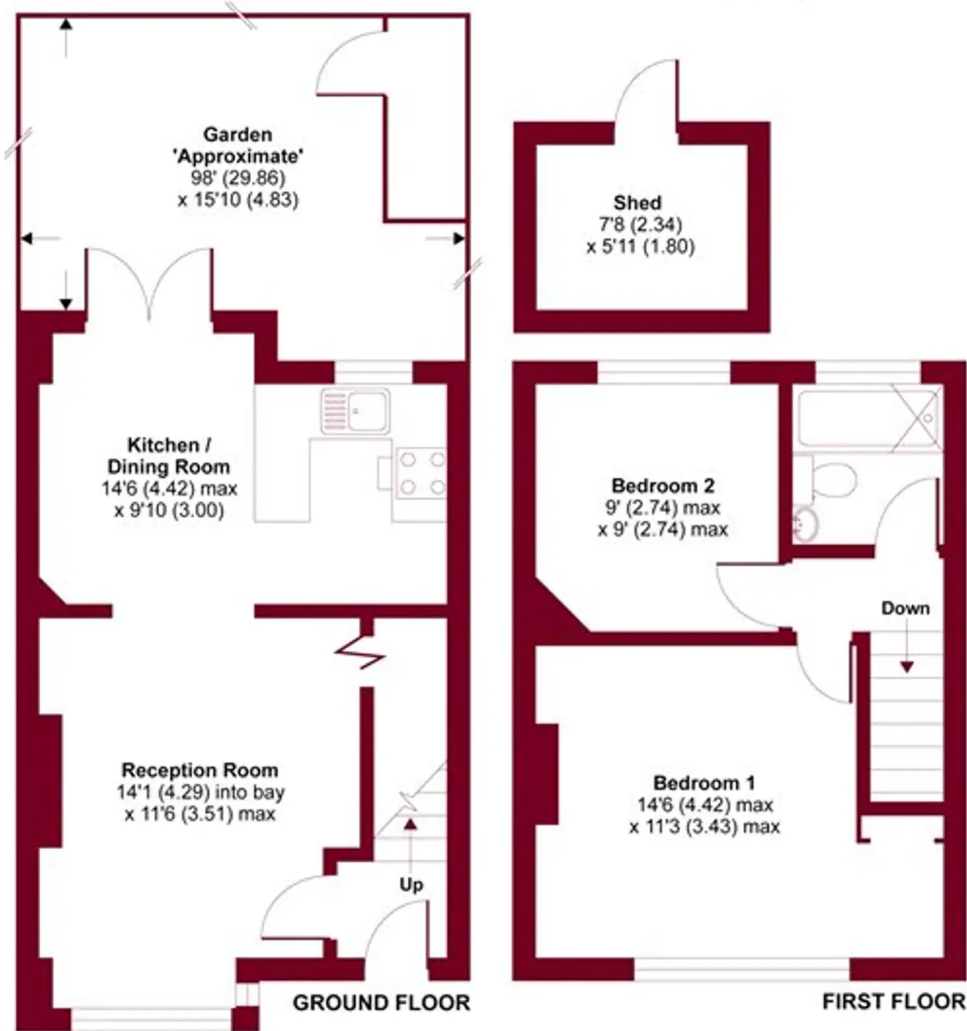
- Two bedroom house
- Off street parking for two cars
- Large garden
- Excellent condition
- No chain





Kenilworth Road, South Harrow, HA2

APPROX. GROSS INTERNAL FLOOR AREA 645 SQ FT 59.9 SQ METRES (EXCLUDES SHED)



Whilst every attempt has been made to ensure the accuracy of the floor plan contained here, measurements of doors, windows and rooms are approximate and no responsibility is taken for any error, omission or misstatement. These plans are for representation purposes only as defined by RICS Code of Measuring Practice and should be used as such by any prospective purchaser. Specifically no guarantee is given on the total square footage of the property if quoted on this plan. Any figure given is for initial guidance only and should not be relied on as a basis of valuation.



Lawrence Rand

Lawrence Rand, 106 Victoria Road - HA4 0AL

01895 632211

Info@lawrence-rand.co.uk

www.lawrence-rand.co.uk/



LAWRENCE RAND