



Beech Avenue, Ruislip

£450,000

Ruislip

Lr LAWRENCE RAND

6b Beech Avenue

Ruislip, Ruislip

The property is a spacious and beautifully presented two bedroom maisonette, offering comfortable living space and share of freehold. Walking distance from both Eastcote and Ruislip Manor stations and shops.

Council Tax band: C

Tenure: Share of Freehold

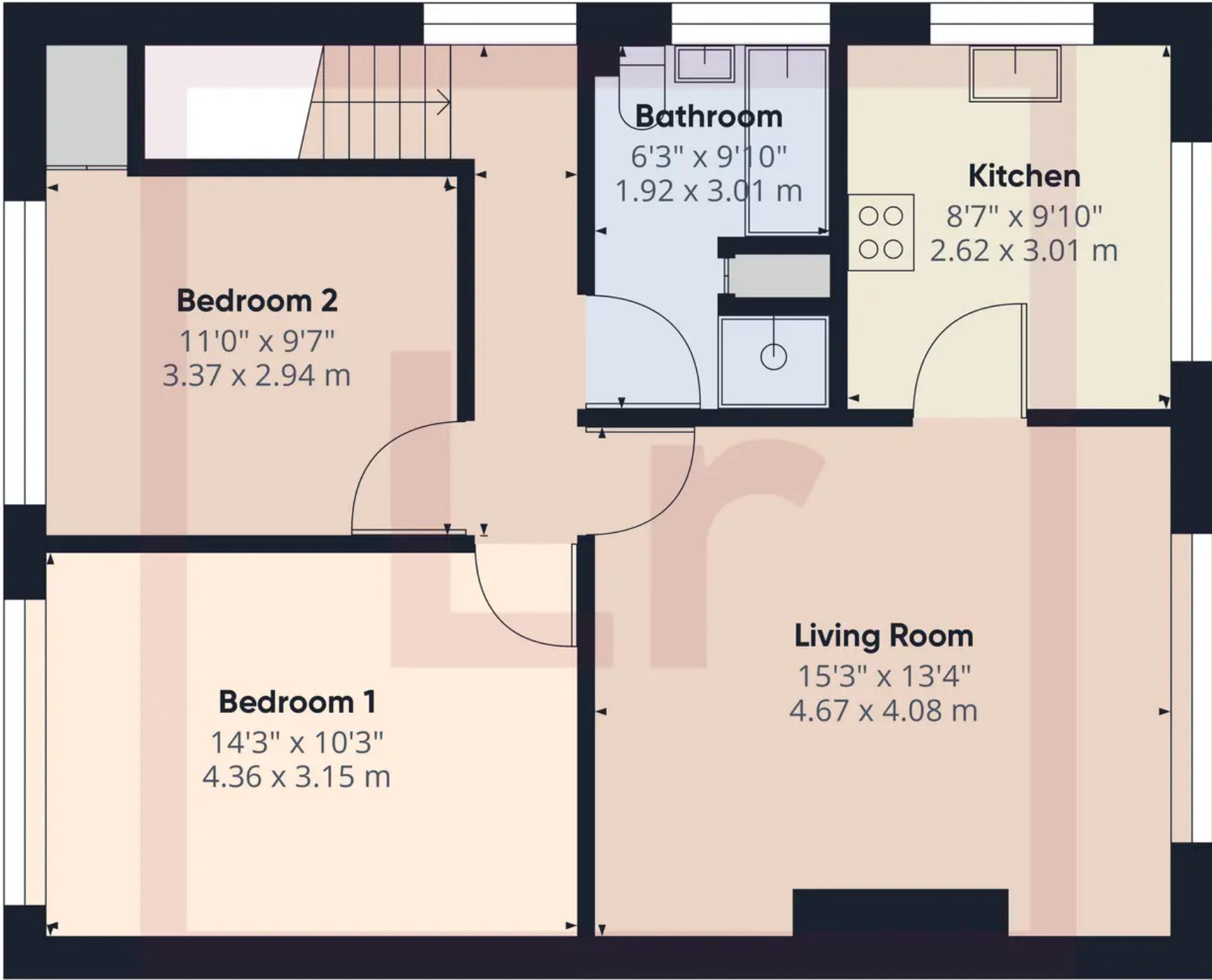
EPC Energy Efficiency Rating: D

EPC Environmental Impact Rating: D

- Two Double Bedroom Maisonette
- Share Of Freehold
- Large Reception Room
- Kitchen
- Family Bathroom
- Rear Garden
- Off Street Parking
- Walking Distance To Station and Shops







Approximate total area⁽¹⁾
658.23 ft²
61.15 m²

(1) Excluding balconies and terraces

While every attempt has been made to ensure accuracy, all measurements are approximate, not to scale. This floor plan is for illustrative purposes only.



Lawrence Rand

Lawrence Rand, 106 Victoria Road - HA4 0AL

01895 632211

Info@lawrence-rand.co.uk

www.lawrence-rand.co.uk/



LAWRENCE RAND