



LAWRENCE RAND

10 Windmill Court, 4 West Way
£287,000

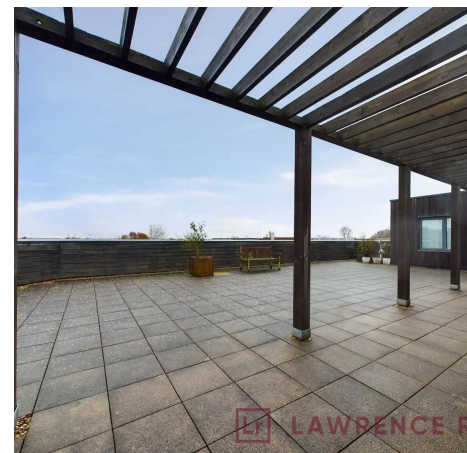
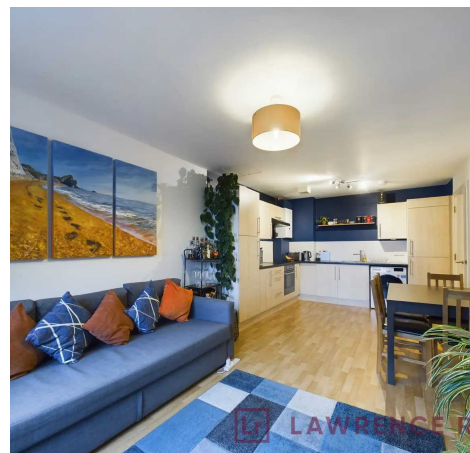


10 Windmill Court

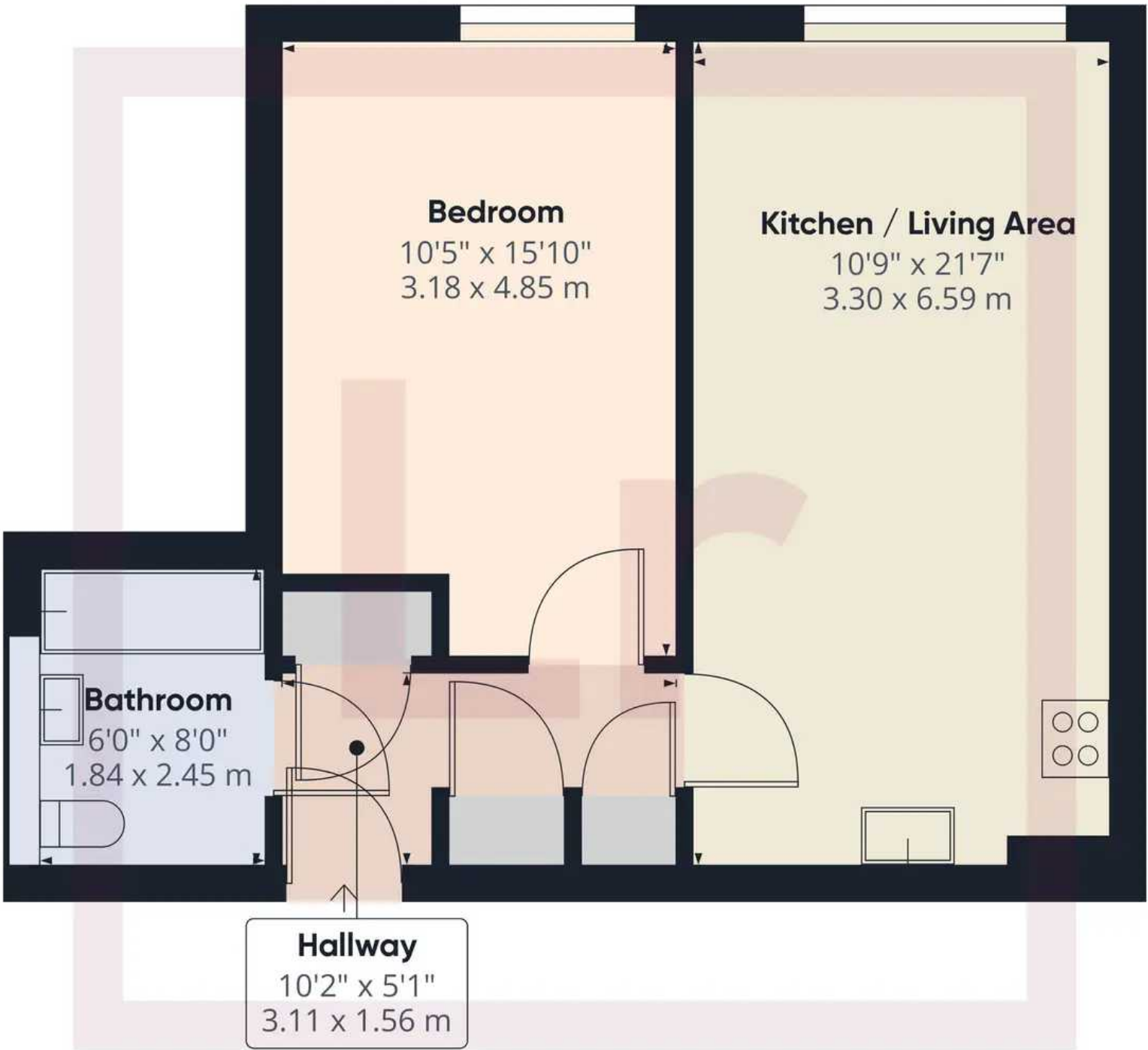
, Ruislip

Exceptional 1 bed flat in sought-after area. Highlight is the open plan kitchen/living area & large rooftop terrace with stunning panoramic views. Generous bedroom and stylish bathroom. Gated entrance for security. Convenient location with excellent transport links. Modern and stylish interior.

- Modern Flat
- One double bedroom
- Open Plan Kitchen / living area
- Large Rooftop Terrace
- Family bathroom
- Gated Secure Entrance
- Ultra convenient location
- Great transport links







Approximate total area⁰
510.49 ft²
47.43 m²

Excluding balconies and terraces

While every attempt has been made to ensure accuracy, all measurements are approximate, not to scale. This floor plan is for illustrative purposes only.



Lawrence Rand

Lawrence Rand, 106 Victoria Road - HA4 0AL

01895 632211

Info@lawrence-rand.co.uk

www.lawrence-rand.co.uk/



LAWRENCE RAND