



13 Pembroke Avenue, Pinner

Pinner

£725,000

 **LAWRENCE RAND**

13 Pembroke Avenue

Pinner, Pinner

Located within a quiet cul-de-sac within easy reach of Pinner and Eastcote High Streets, this impressive town house offers spacious and versatile living spaces cleverly arranged over three floors. Filled with natural light and generously proportioned rooms, four bedrooms and three bathrooms - this is a must see property.

Council Tax band: F

Tenure: Freehold

EPC Energy Efficiency Rating: C

EPC Environmental Impact Rating: C

- 4/5 Bedrooms
- 3 Bathrooms
- Fitted Kitchen
- Spacious Master Bedroom with en-suite
- Cul-de-sac development
- Good Size Rear Garden
- Easy Access to Stations
- Close to Cannon Lane School





Lr LAWRENCE RAY



Lr LAWRENCE RAY



Lr LAWRENCE RAY



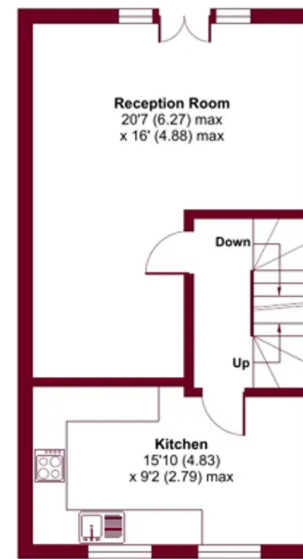
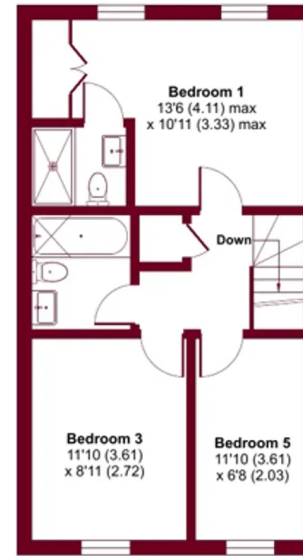
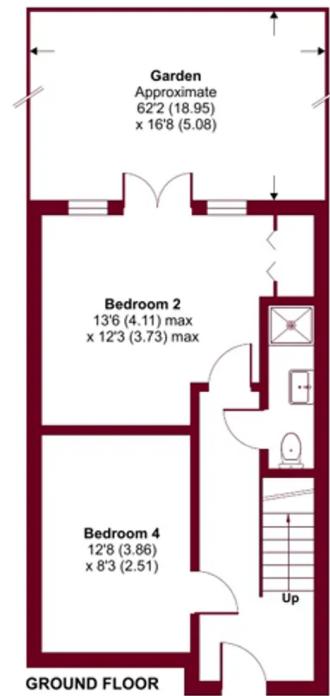
Lr LAWRENCE RAY



Pembroke Avenue, Pinner, Middlesex, HA5

Approximate Area = 1372 sq ft / 127 sq m

For identification only - Not to scale





Lawrence Rand

Lawrence Rand, 106 Victoria Road - HA4 0AL

01895 632211

Info@lawrence-rand.co.uk

www.lawrence-rand.co.uk/



LAWRENCE RAND