



WHITE HOUSE





Perfectly placed, within the heart of the Teign Valley village of Trusham, sits this beautiful cottage where character and convenience have been truly blended to create a wonderful home.



WHITE HOUSE  
TRUSHAM  
DEVON, TQ13 0LU

A38 1.1 miles, Newton Abbot 7.1 miles, Exeter 13 miles,  
(all distances and times are approximate)

Two Reception Rooms | Two Bedrooms | Conservatory  
Kitchen/Breakfast Room | Utility/Shower Room |  
Parking | Cottage Garden | Beautiful views | EPC E



THE TEIGN VALLEY OFFICE, CHUDLEIGH

TEL: 01626 852666

CHUDLEIGH@SAWDYEANDHARRIS.CO.UK

SAWDYEANDHARRIS.CO.UK







# Welcome



A charming detached cottage with the front door sheltered beneath a storm porch. On entering, the room opens to the Dining area which is full of character with a beautiful fireplace with timber lintel and brick herringbone tiled fireback, exposed natural stone wall and painted timber beams all of which add to the overall ambiance of this lovely space.







# *The Living Space*



The space flows through to the Living Room passing by the exposed timber half height wall to one side and opening in to a room that clearly has the WOW factor! A bare stone wall sits behind the fireplace, larger this time and inset with a multi-fuel stove which finishes this room perfectly. Cosy up in here when the nights are drawing in and you have the perfect living accommodation.









# *Kitchen*

Gravitate towards the rear of this lovely cottage where the heart of the home greets you. The Kitchen is fitted with oak fronted cupboards and modern grey handles. This bright and warm room opens into the Conservatory with its glazed ceiling making this an ideal space to cook, dine and entertain in one area. French Doors lead out to the rear cottage garden and private patio area.









*Conservatory*



*And so to bed....*



To the first floor are two bedrooms, the main bedroom being dual aspect and with views to Canonteign Falls.



*And so to bed....*

The second bedroom has an outlook over the front of the property and with views across the green and the village beyond.





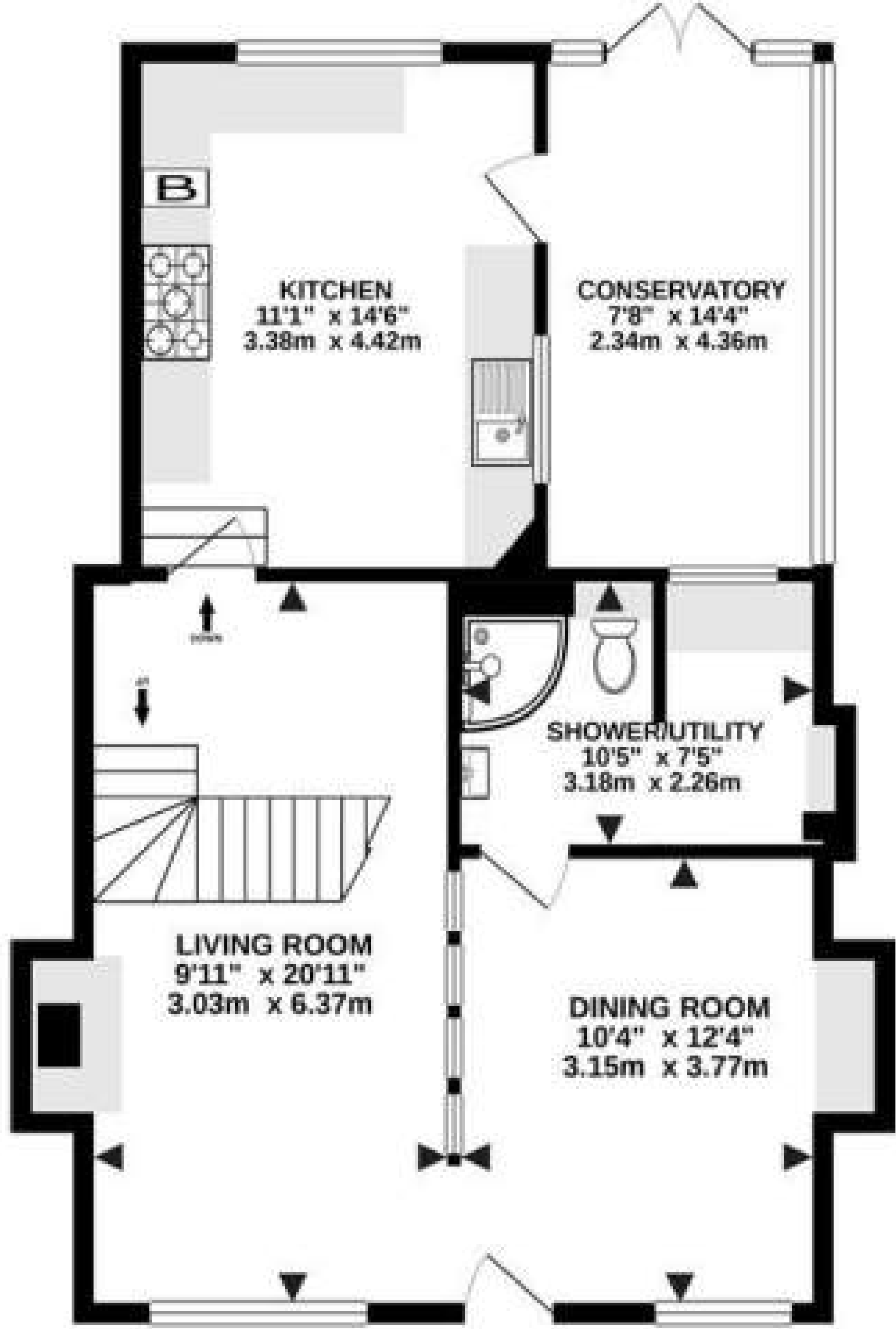


The modern family Bathroom has part tiled walls with a curved ended bath with glazed shower screen and waterfall shower and second hand held shower. There is a built-in cupboard for toiletries and an antique style radiator. The space is illuminated by spotlights giving a modern feel.

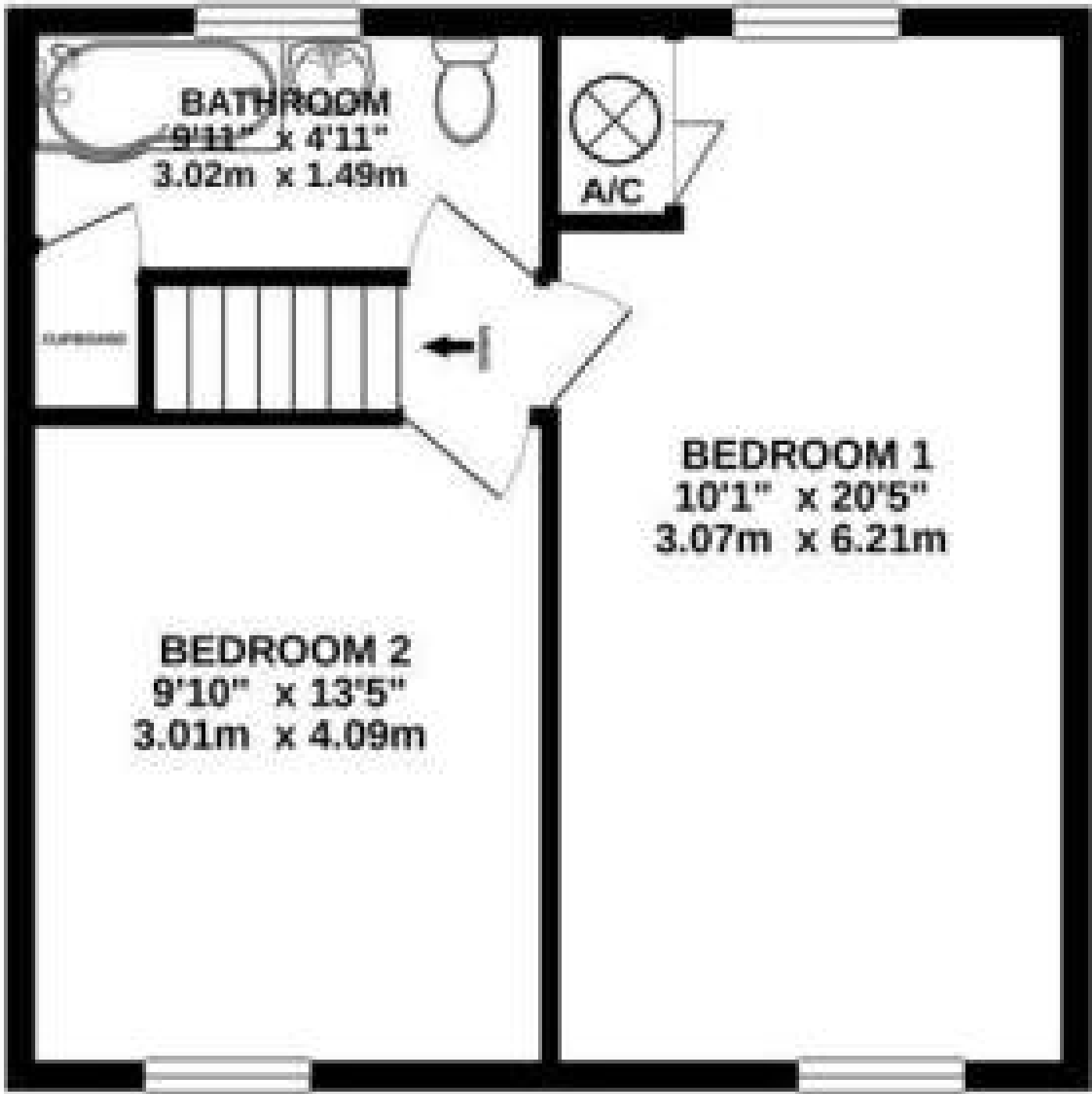


# Floor Plans

GROUND FLOOR  
743 sq.ft. (69.1 sq.m.) approx.



1ST FLOOR  
436 sq.ft. (40.5 sq.m.) approx.

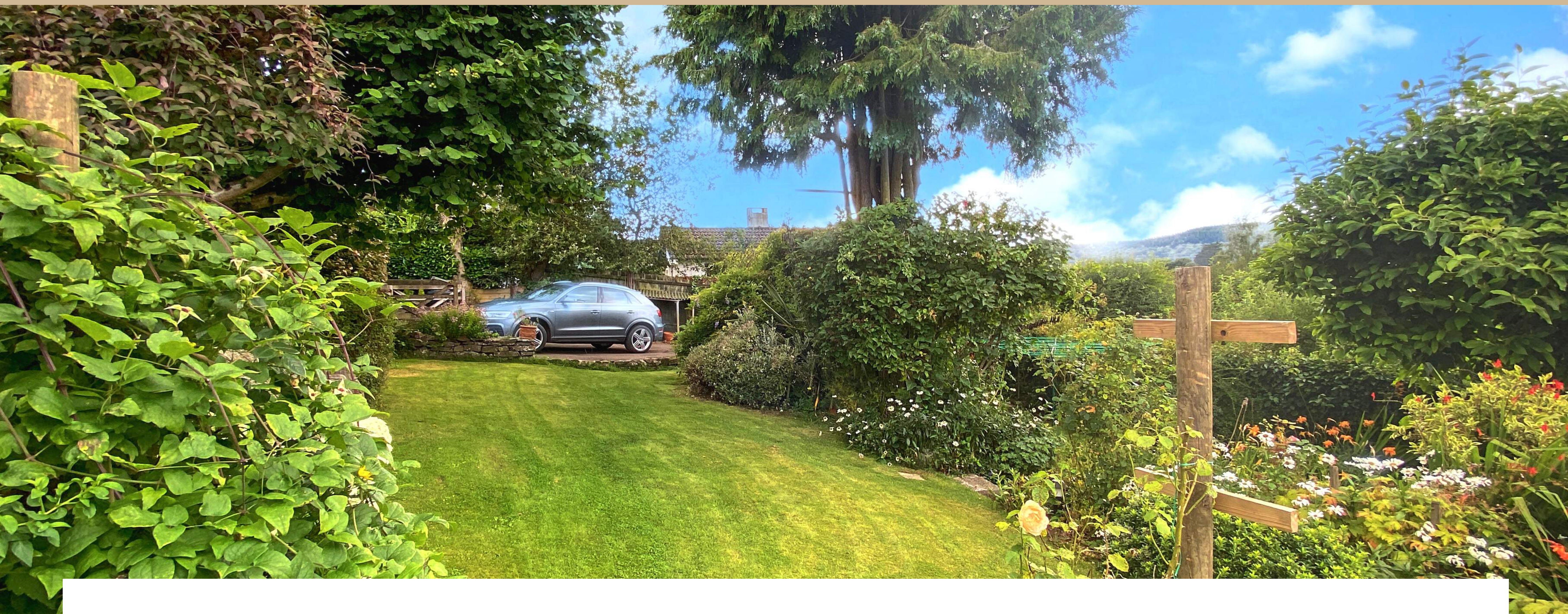


TOTAL FLOOR AREA: 1179 sq.ft. (109.5 sq.m.) approx.

Whilst every attempt has been made to ensure the accuracy of the floorplan contained here, measurements of doors, windows, rooms and any other items are approximate and no responsibility is taken for any errors, omissions or mis-statements. This plan is for illustrative purposes only and should be used as such by any prospective purchaser. The services, systems and appliances shown have not been tested and no guarantee as to their operability or efficiency can be given.  
Made with Metropix ©2020







Private and well looked after there is an abundance of flowering beds and borders in the rear garden, as well as mature shrubs and trees interspersed with tucked away places to sit and enjoy the garden and its views.

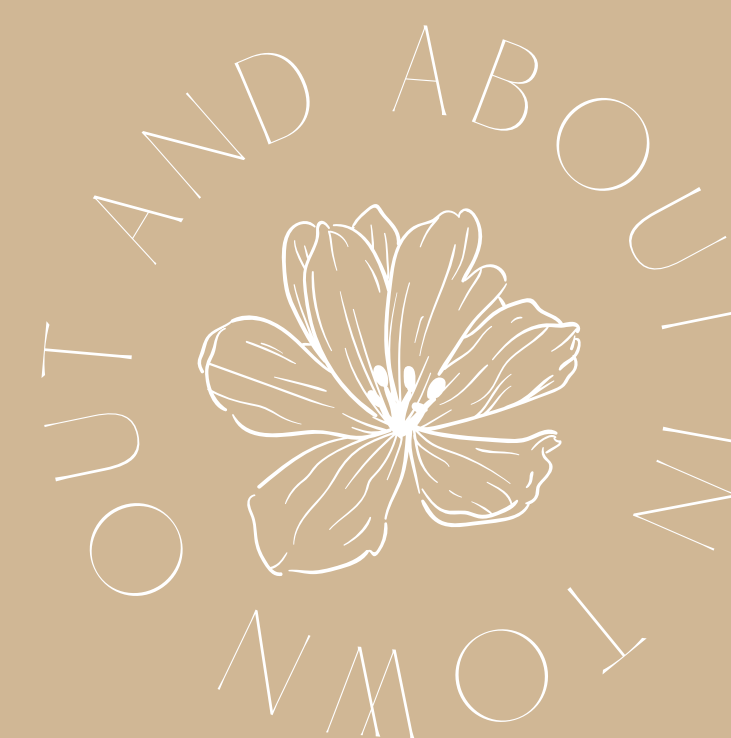


*"A beautiful country style cottage garden  
greet's you ...."*





# TRUSHAM



Trusham is a picturesque village located in the desirable Teign Valley which benefits from a village church, playground and the excellent Cridford Inn which is renowned as a gastro pub. Chudleigh approximately three miles away is the nearest town and has a number of restaurants, pubs and shops as well as two doctors surgeries. The property provides excellent access to Dartmoor National Park as well as Haldon Forest, both of which provide numerous outdoor activities. There are also a number of walks that can be accessed from the village and Teign Valley Golf Course is only a short distance away.

Access to the A38 arterial road is achieved in just over three miles which provides onward access to the other major roads of the county as well as the cathedral city of Exeter. The location is in an excellent school catchment area with a free school bus service.







A country cottage full of character in a superb location, fall in love with all that the White House has to offer.



To view simply call 01626 852666 | Email: [katie@sawdyeandharris.co.uk](mailto:katie@sawdyeandharris.co.uk)