



Moonshine Cottage

NEW EXETER STREET | CHUDLEIGH

SAWDYE & HARRIS
CELEBRATING 175 YEARS

MOONSHINE COTTAGE
NEW EXETER STREET
CHUDLEIGH
TQ13 0DB

A beautiful Grade II listed cottage towards the edge of Chudleigh and dating from the 18th Century. This charming home has been much improved and has many period features throughout complemented with touches of modern day living.

**Two Bedrooms | Bathroom | Kitchen
Living Room | Cross Passageway
Original features | Sought after location
Courtyard Garden**



**THE TEIGN VALLEY OFFICE
TEL: 01626 852666
CHUDLEIGH@SAWDYEANDHARRIS.CO.UK
WWW.SAWDYEANDHARRIS.CO.UK**

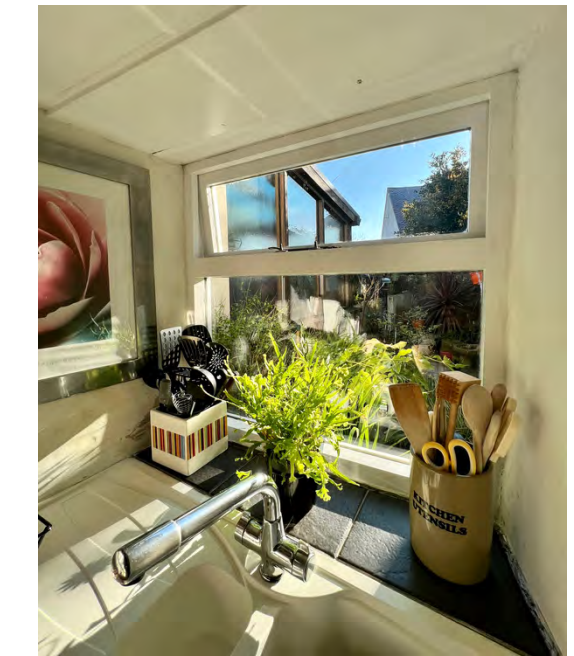




On entering this lovely cottage you get a feel of warmth and homeliness - from the exposed timber beams to the focal fireplace with timber lintel over but fitted with a 'gas effect' wood burning stove - ideal so you get the feel and effect of a real fire without all the work !

The property is accessed from the front across a shared covered passageway, where the current owner has a utility area with space and plumbing for washing machine. This space then opens through tot eh courtyard and gives access to Moonshine Cottage





The modern kitchen blends well with the heritage of this lovely home and is fitted with a range of floor mounted cupboards, space for under counter fridge and freezer, as well as a built in oven and hob - A lovely touch is the exposed beams and glimpses to the living space and to the rear views of the courtyard garden.

There are two bedrooms to the first floor as well as a useful third room - ideal for use as a study and with a window overlooking the rear.



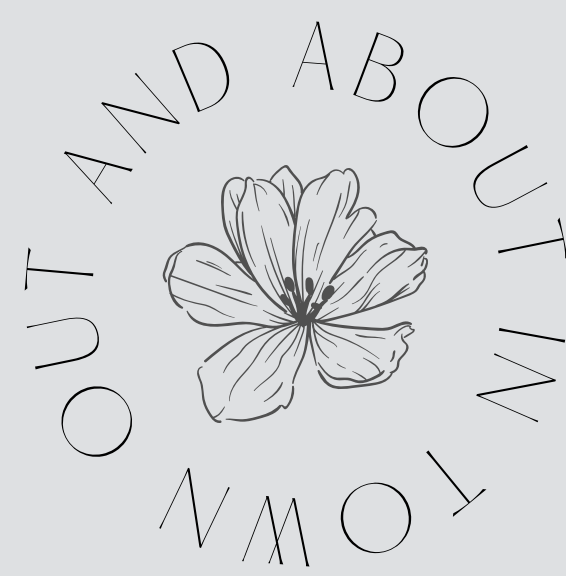
The bathroom also has a superb feel to it, finished in a country cottage style yet fitted with a modern white suite with shower and dual flush WC.







About... Chudleigh



Chudleigh has a wealth of charm and community spirit, but has the atmosphere of a village. It is well served by a good range of shops, public houses, restaurants, church and primary school.

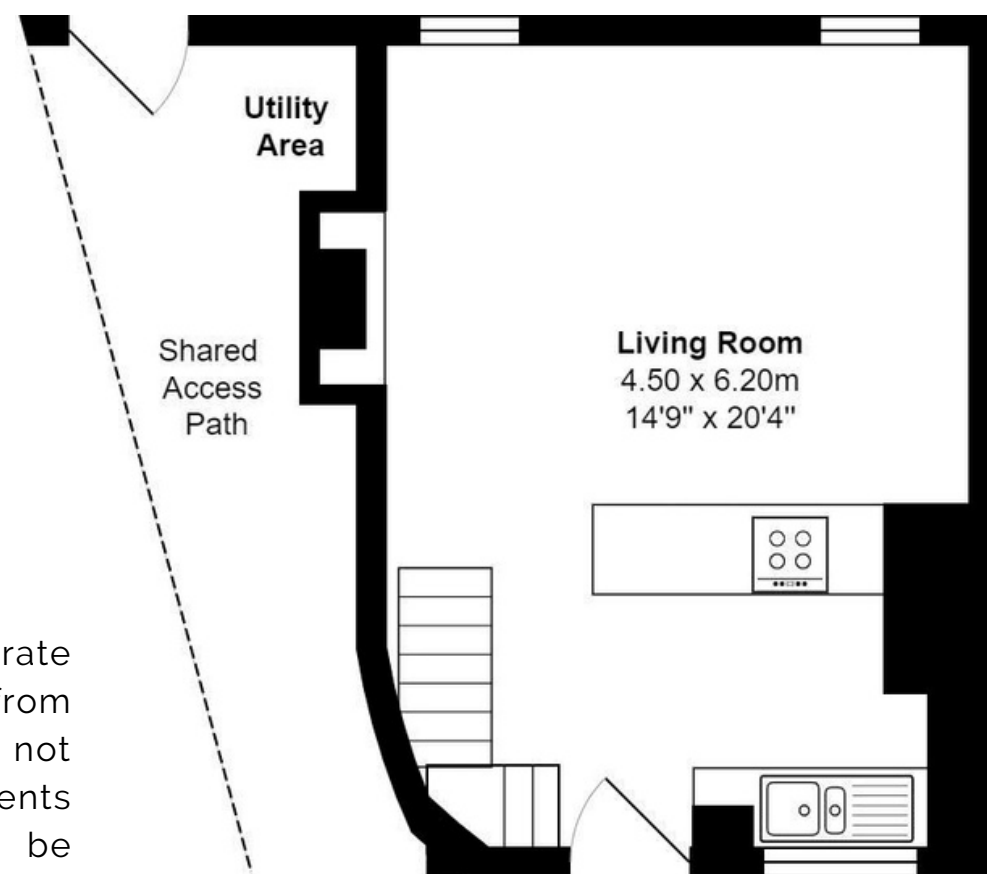
The town also has excellent provision for after school child care, as well as two playschools and mother and toddler groups. There is also a library, health centres, dentist, vet and facilities for numerous sports and pastimes.

Chudleigh is well located near the A38 which provides easy access to Plymouth, Exeter, Exeter Airport and the M5 motorway. A regular 'bus service runs to both Exeter and Newton Abbot.

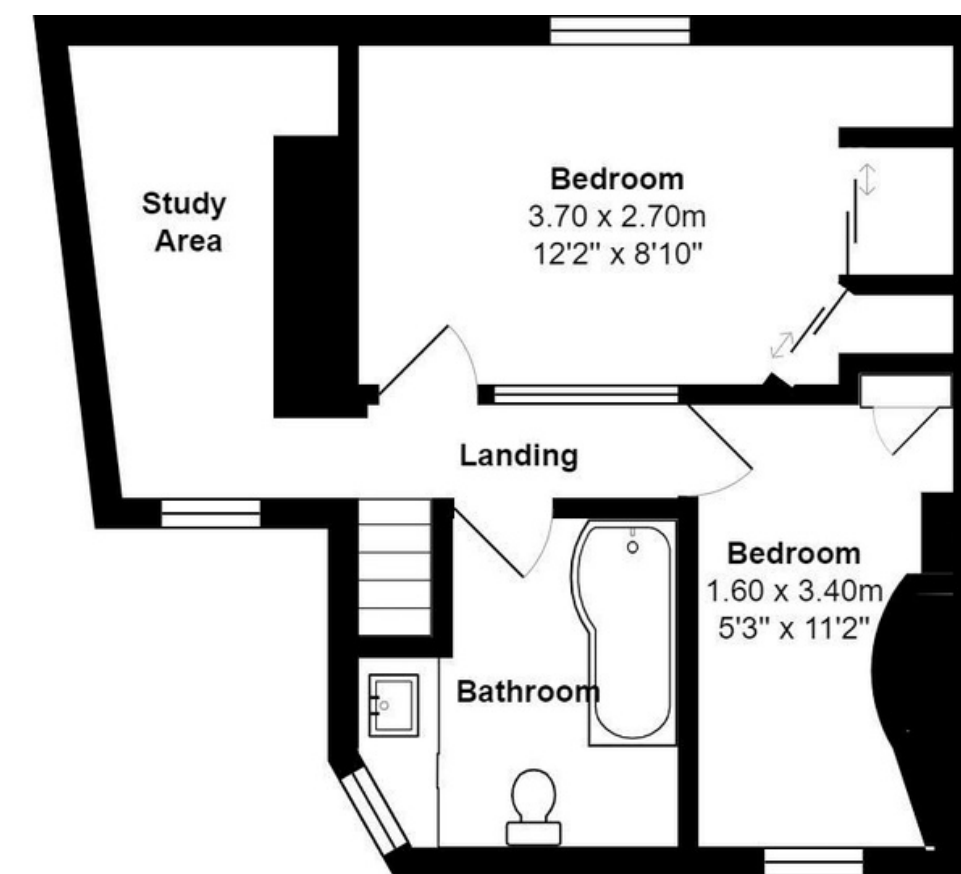


Floorplan

Sawdye & Harris use all reasonable endeavours to supply accurate property information in line with the Consumer Protection from Unfair Trading Regulations 2008. These property details do not constitute any part of the offer or contract and all measurements are approximate. The matters in these particulars should be independently verified by prospective buyers. It should not be assumed that this property has all the necessary planning, building regulation or other consents. Any services, appliances and heating system(s) listed have not been checked or tested. Purchasers should make their own enquiries to the relevant authorities regarding the connection of any service. No person in the employment of Sawdye & Harris has any authority to make or give any representations or warranty whatever in relation to this property or these particulars or enter into any contract relating to this property on behalf of the vendor. Floor plan not to scale and for illustrative purposes only



Ground Floor



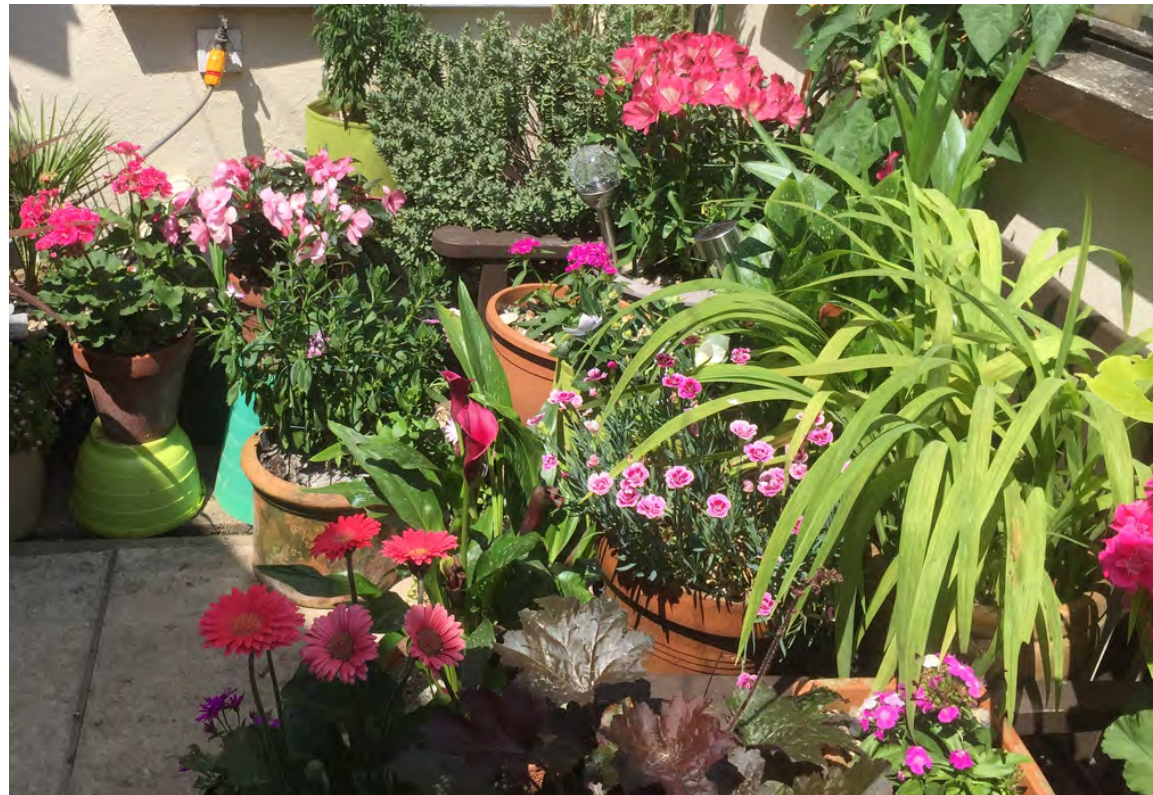
First Floor

4 New Exeter Street, Chudleigh

Total Area: 73.9 m² ... 796 ft²



All measurements are approximate and for display purposes only



The Little Details...

- 2 Bedroom thatched Cottage
 - Living Room
 - Kitchen
- Period features
 - Parking
 - Freehold
- Council tax band B
 - EPC D
- Courtyard garden
 - Idyllic setting

Services: Gas central heating, mains water and electric, private shared drainage.





Moonshine Cottage



To view this property strictly by appointment only please scan the QR code above or contact us by

E -chudleigh@sawdyeandharris.co.uk T - 01626 852666

