



Penn Road, Datchet, Slough    **£255,000**

 **YOUR MOVE**  
Frank Farr



# YOUR MOVE

Frank Farr





## Penn Road, Datchet, Slough

**£255,000**

### Property Description

Situated in a popular residential cul-de-sac in Datchet is this end-terrace house. Accommodation to the ground floor comprises open plan living/kitchen. The first floor landing leads to double bedroom and bathroom/WC with three piece suite. The property further benefits from front garden and two parking spaces. EPC Grade D.

### Our View

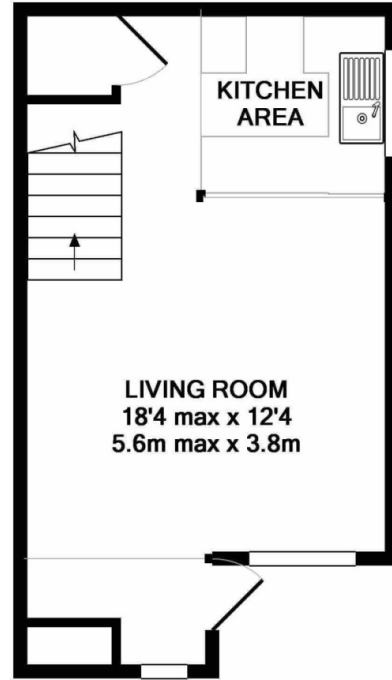
The property is well presented and offers an ideal first time purchase. Viewings are highly recommended.

### Location

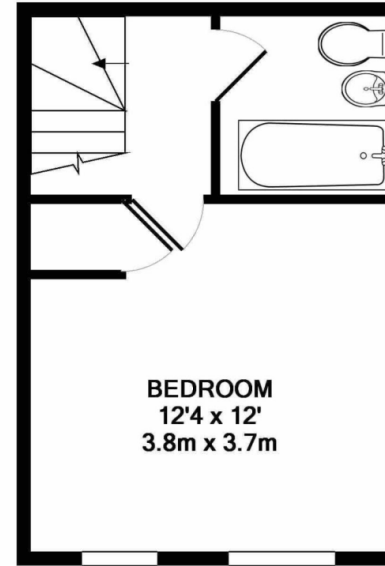
Ideally located for local shops, amenities, easy access links to motorway network, Heathrow Airport and major shopping centres nearby.



**EPC Grade D**  
**For full EPC please contact the branch**



GROUND FLOOR



1ST FLOOR



TOTAL APPROX. FLOOR AREA 484 SQ.FT. (45.0 SQ.M.)

Whilst every attempt has been made to ensure the accuracy of the floor plan contained here, measurements of doors, windows, rooms and any other items are approximate and no responsibility is taken for any error, omission, or mis-statement. This plan is for illustrative purposes only and should be used as such by any prospective purchaser. The services, systems and appliances shown have not been tested and no guarantee as to their operability or efficiency can be given

Made with Metropix ©2019

IMPORTANT NOTE TO PURCHASERS: We endeavour to make our sales particulars accurate and reliable, however, they do not constitute or form part of an offer or any contract and none is to be relied upon as statements of representation or fact. The services, systems and appliances listed in this specification have not been tested by us and no guarantee as to their operating ability or efficiency is given. All measurements have been taken as guide to prospective buyers only, and are not precise. Floor plans where included are not to scale and accuracy is not guaranteed. If you require clarification or further information on any points, please contact us, especially if you are travelling some distance to view. Fixtures and fittings other than those mentioned are to be agreed with the seller.

Your Move Frank Farr is the trading name of Anthony Curtis Estate Agents Limited, registered company number 5268121, registered office 20 Southwold Spur Langley Berks SL3 8XX .

Your Move Frank Farr is an independently owned and operated business, operated under licence from your-move.co.uk Limited

\*Calls may be recorded and/or monitored for training and/or security purposes.

248 High Street, Langley, Slough, SL3 8LL

01753 549349 \* [LangleyFF@your-move.co.uk](mailto:LangleyFF@your-move.co.uk)



**YOUR MOVE**  
Frank Farr