



Sunderland Road, Gateshead, Tyne And Wear  
Offers Over £190,000

 **YOUR MOVE**  
— Chris Stonock —





IMPORTANT NOTE TO PURCHASERS: We endeavour to make our sales particulars accurate and reliable, however, they do not constitute or form part of an offer or any contract and none is to be relied upon as statements of representation or fact. The services, systems and appliances listed in this specification have not been tested by us and no guarantee as to their operating ability or efficiency is given. All measurements have been taken as guide to prospective buyers only, and are not precise. Floor plans where included are not to scale and accuracy is not guaranteed. If you require clarification or further information on any points, please contact us, especially if you are travelling some distance to view. Fixtures and fittings other than those mentioned are to be agreed with the seller.





## Description

Deceptively spacious 5 bedroom Town House with versatile accommodation suitable for a range of needs. The accommodation has been well maintained and briefly comprises: Hall, dining room open to lounge, kitchen and study. To the lower ground there is a bedroom/living room, utility room along with a shower room. To the first floor, there are four bedrooms, with the master having an ensuite and also a family bathroom. Other features include the boarded loft and a two zone hive system which has been installed. The rear of the property has a low maintenance artificially turfed garden, it is well enclosed offering a degree of seclusion. The property also offers off street parking. As the accommodation is spread over three floors it is rare to find a property such as this that offers such good sized bedrooms as well as great living accommodation. The location is ideal for commuting with the A19 and A1 within easy reach and access to all the major conurbations also available. The area also provides an excellent array of schooling, cultural and shopping facilities all of which are on hand. Viewing comes highly recommended to appreciate the benefits on offer, call Your Move on 0191 4876850 to arrange your viewing.

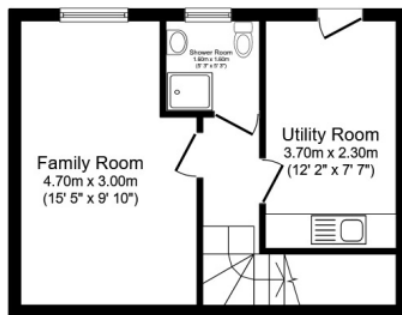
## Council Tax

Council Tax D

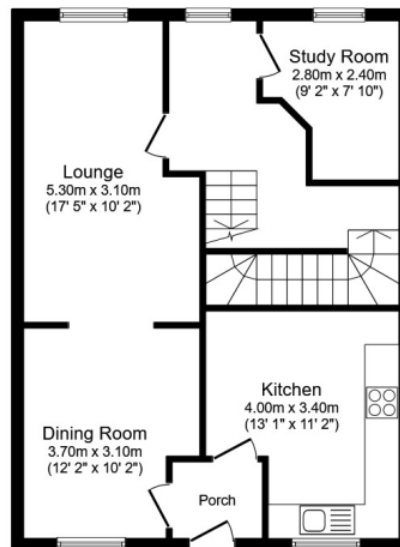
## EPC

EPC Rating - B

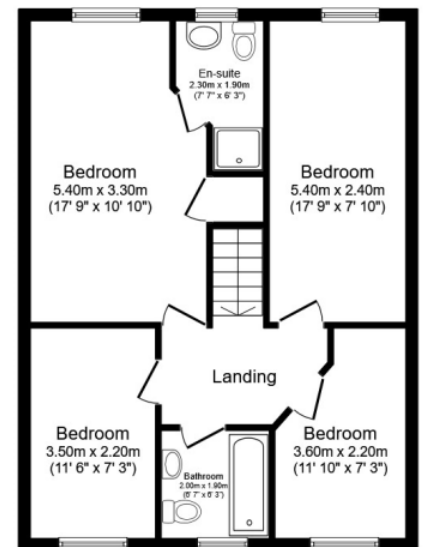
For full EPC please contact the branch.



**Lower Ground Floor**



**Ground Floor**



**First Floor**

Total floor area 153.0 sq. m. (1,647 sq. ft.) approx

This plan is for illustration purposes only and may not be representative of the property. Plan not to scale.

Powered by audioagent.com

449-451 Durham Road, Gateshead, Tyne And Wear, NE9 5EX

0191 487 6850 \* LowFell@your-move.co.uk



**YOUR MOVE**

— Chris Stonock —

your-move.co.uk