



# Herbert Street

London, NW5

£895 per week  
(£3,878.33 pcm)

SHORT LET A charming three bedroom mid terraced Victorian home. Arranged over three floors with loads of character highlighted by the wood floors and downstairs living room and kitchen leading onto a South facing garden. EPC Rating D

CHESTERTONS





# Herbert Street

## London, NW5

- Mid Terraced Victorian Home
- Three double Bedrooms
- Pretty South Facing Garden
- Excellent Location
- EPC rating D





\*Video tour available. **SHORT LET** A truly charming mid terraced three bedroom Victorian home located in this quiet residential turning with easy access to Parliament Hill fields, the Queens Crescent market and the favourable transport links of Gospel Oak, Chalk Farm and Kentish Town (Northern Line)

The accommodation is beautifully presented with a subtle blend of contemporary and period features comprising a large open plan kitchen/reception on the ground floor which leads out onto a lovely South facing patio garden. A double bedroom and a large family bathroom with a separate shower are located on the raised ground floor, with the master bedroom and a further double bedroom located on the top floor.

EPC Rating D

The property further benefits from being neutrally decorated and has wooden floors throughout has all bill included and is offered fully furnished.

**Tenure:** To be advised

**Furnished**

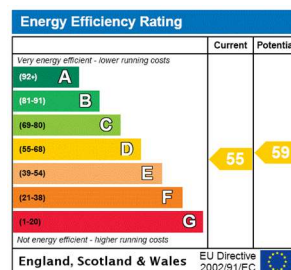
Additional tenant charges apply (fees apply to non-AST tenancies only)

Tenancy Agreement Fee: £300

References per Tenant/Guarantor: £60

Inventory check (approx. £100 – £250 inc. VAT)

[chestertons.com/property-to-rent/applicable-fees](https://www.chestertons.com/property-to-rent/applicable-fees)



**Chestertons Kentish Town Lettings**

225 Kentish Town Road

London

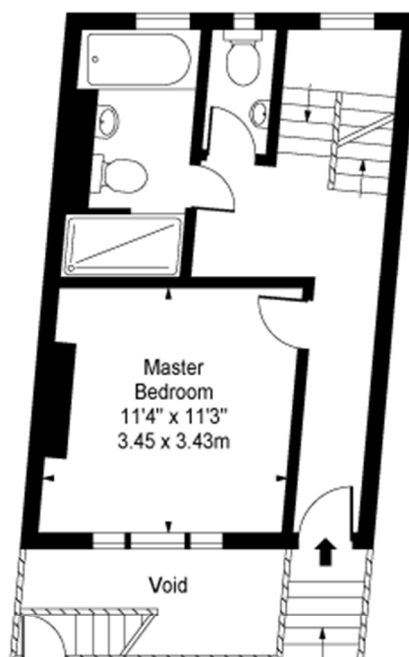
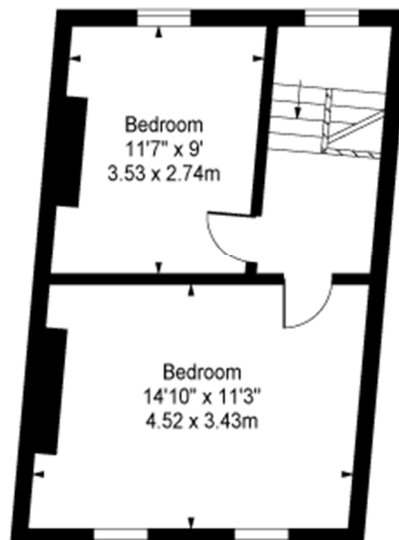
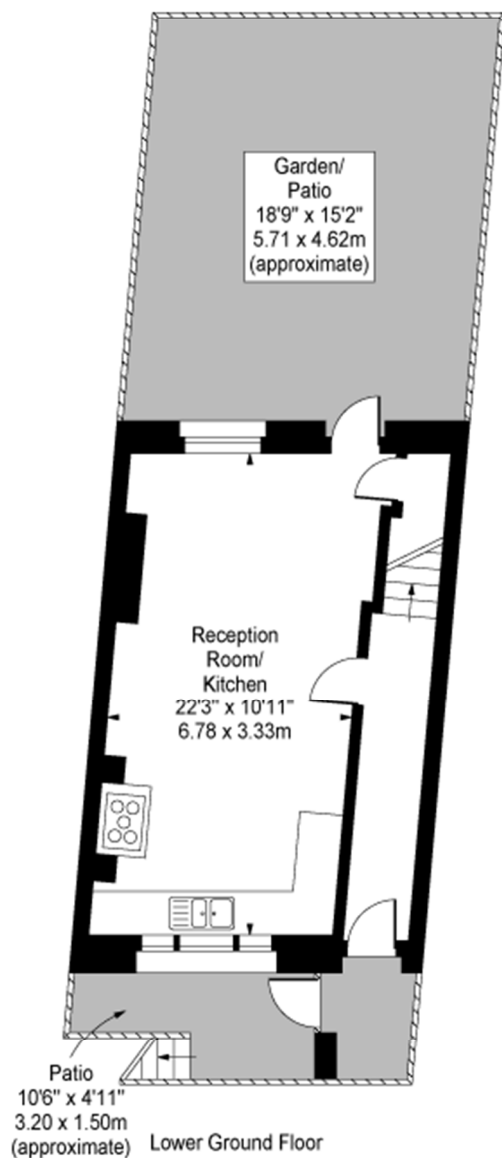
NW5 2JU

[lettings.kentishtown@chestertons.com](mailto:lettings.kentishtown@chestertons.com)

02072671010

[chestertons.com](https://www.chestertons.com)

Herbert Street,  
Kentish Town, NW5 4HD



**Approx Gross Internal Area 1012 Sq Ft - 94.01 Sq M**

For Illustration Purposes Only - Not To Scale

Floor Plan by [www.bpmmediagroup.com](http://www.bpmmediagroup.com)

Ref: No. P52731