



# 598-602 Holloway Road

## Holloway, N19

£2,650 per month  
(£611.54 per week)

A bright and spacious two bedroom apartment that has been recently refurbished throughout. Set on the first floor the apartment has an open kitchen and reception room, two double bedrooms and a bathroom and has good access to public transport links.



# 598-602 Holloway Road

## Holloway, N19

- A Newly Refurbished Two Bedroom Apartment
- Open Plan Kitchen & Reception Room
- Two Large Double Bedrooms
- Bathroom





A bright and spacious two bedroom apartment set on the first floor in a modern development. The property comprises; an open plan kitchen and reception room, two large double bedrooms with built-in storage and a bathroom.

Newly refurbished throughout to a good standard and available immediately the property is offered on an unfurnished basis.

Located close to Holloway Road station (Piccadilly line) and with good access to other public transport links and many local amenities.

**Minimum Term:** 12 months  
**Deposit Required:** £3,057.69  
**Local Authority:** Islington Council  
**Council Tax Band:** D  
**EPC Rating:** C  
**Unfurnished**

Energy Efficiency Rating		
	Current	Potential
Very energy efficient - lower running costs		
(94-100) <b>A</b>		
(81-93) <b>B</b>		
(69-80) <b>C</b>	73	76
(55-68) <b>D</b>		
(39-54) <b>E</b>		
(21-38) <b>F</b>		
(1-20) <b>G</b>		
Not energy efficient - higher running costs		
England, Scotland & Wales EU Directive 2002/91/EC		

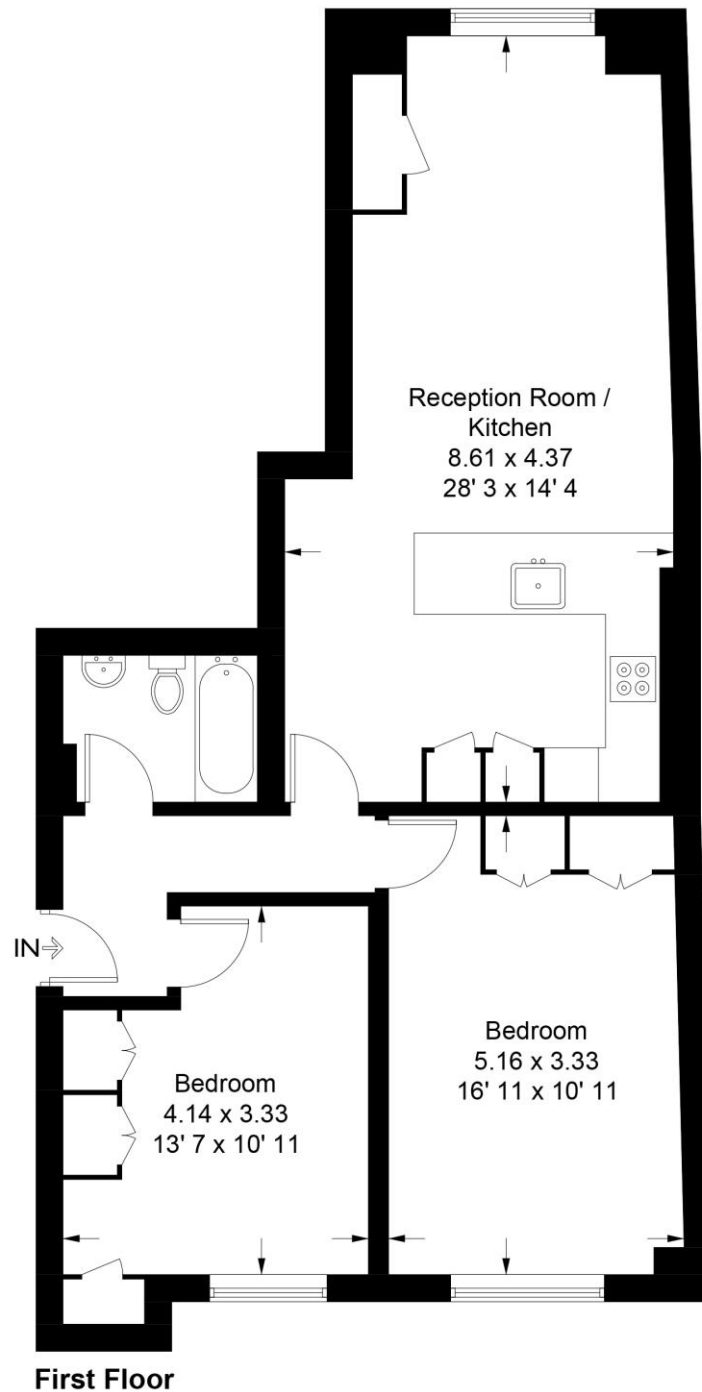
### *Chestertons Kentish Town Lettings*

225 Kentish Town Road  
London  
NW5 2JU  
kentishtownlettingsusers@chestertons.co.uk  
02072671010  
chestertons.co.uk

Additional tenant charges apply (fees apply to non-AST tenancies only)  
Tenancy Agreement Fee: £300  
References per Tenant/Guarantor: £60  
Inventory check (approx. £100 – £250 inc. VAT)  
chestertons.co.uk/property-to-rent/applicable-fees

# Tollington House

Approximate Gross Internal Area = 807 sq ft / 75 sq m



Not to scale, for guidance only and must not be relied upon as a statement of fact  
All measurements and areas are approximate only and have been prepared in  
accordance with the current edition of the RICS Code of Measuring Practice