



Montpelier Grove

London, NW5

£2100 per month

This sensational one double bedroom apartment is situated on the first floor within this impressive period conversion. The property comprises; open plan reception room, master bedroom and three piece bathroom suite.

CHESTERTONS



Montpelier Grove

London, NW5

•



This sensational one double bedroom apartment is situated on the first floor within this impressive period conversion. The property comprises; open plan reception room, master bedroom and three piece bathroom suite.

This stunning apartment further benefits; private balcony, high ceilings, wooden flooring, exposed brick and modern fixtures and fittings. The property is offered furnished and available NOW.

Montpelier Grove is ideally situated moments from all the amenities of Kentish Town and close to Kentish Town's Overground and Under Ground Stations.

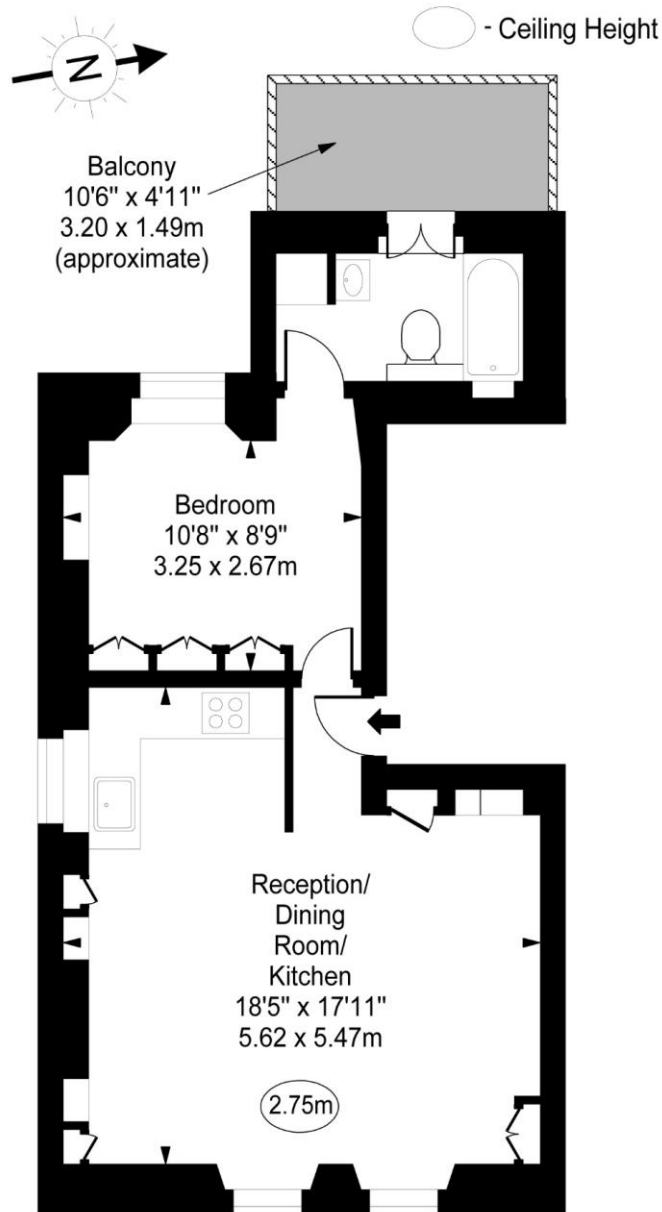
Minimum Term: months
Deposit Required: £0.00
Local Authority:
Council Tax Band:
EPC Rating: C
Furnished

Chestertons Kentish Town Lettings

225 Kentish Town Road
London
NW5 2JU
kentishtown@chestertons.co.uk
02072671010
chestertons.co.uk

Additional tenant charges apply (fees apply to non-AST tenancies only)
Tenancy Agreement Fee: £300
References per Tenant/Guarantor: £60
Inventory check (approx. £100 – £250 inc. VAT)
chestertons.co.uk/property-to-rent/applicable-fees

Montpelier Grove, NW5



First Floor

Gross Internal Area - 478 Sq Ft - 44.41 Sq M

Approx Gross Internal Area 478 Sq Ft - 44.41 Sq M

For Illustration Purposes Only - Not To Scale

www.goldlens.co.uk

Ref. No. 015602AG

