



Montpelier Grove

Kentish Town, NW5

£3250.00

A beautifully presented and generously proportioned two bedroom triplex apartment, arranged over the upper three floors of a period property. Comprising; two double bedrooms, two bathrooms, private garden and kitchen diner.



Montpelier Grove

Kentish Town, NW5

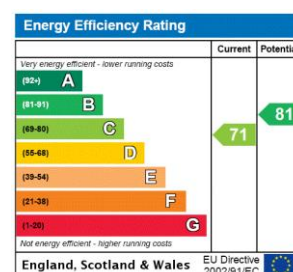
- Two Double Bedrooms
- Two Bathrooms
- Private Garden
- Located Over Three Floors
- EPC Rating C



A beautifully presented and generously proportioned two bedroom triplex apartment, arranged over the upper three floors of a period property. Located on one of Kentish Town's prime roads, the property further benefits from being located only short walk away from both Tufnell Park Underground station (Northern Line) Kentish Town main line station (Thameslink) and underground station (Northern Line) as well as the many local amenities on offer in Kentish Town & Tufnell Park.

The accommodation on the first floor comprises; a lovely family bathroom and stairs leading out onto a beautiful private garden. On the second floor you will find a fully fitted kitchen diner and large

Minimum Term: months
Deposit Required: £2,750.00
Local Authority:
Council Tax Band:
EPC Rating: D
Unfurnished

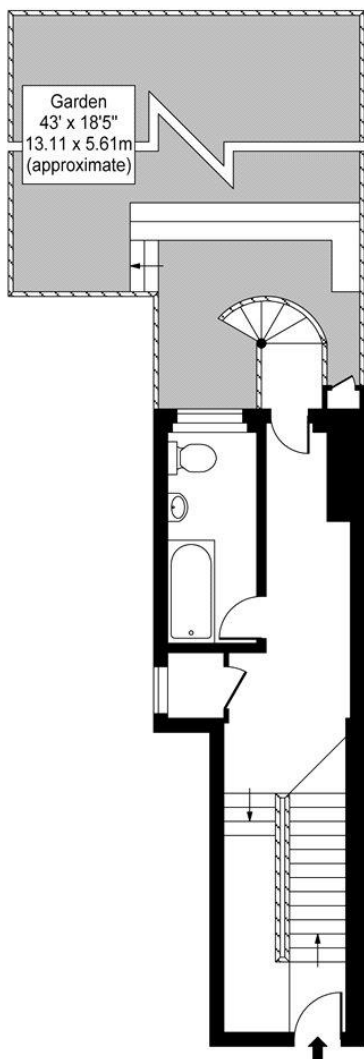
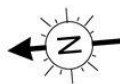


Chestertons Kentish Town Lettings

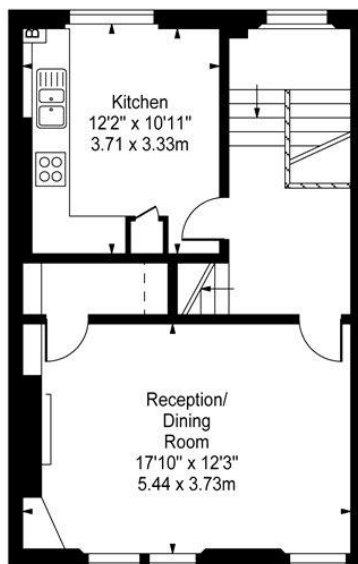
225 Kentish Town Road
 London
 NW5 2JU
kentishtownlettingsusers@chestertons.co.uk
 02072671010
chestertons.co.uk

Additional tenant charges apply (fees apply to non-AST tenancies only)
 Tenancy Agreement Fee: £300
 References per Tenant/Guarantor: £60
 Inventory check (approx. £100 – £250 inc. VAT)
chestertons.co.uk/property-to-rent/applicable-fees

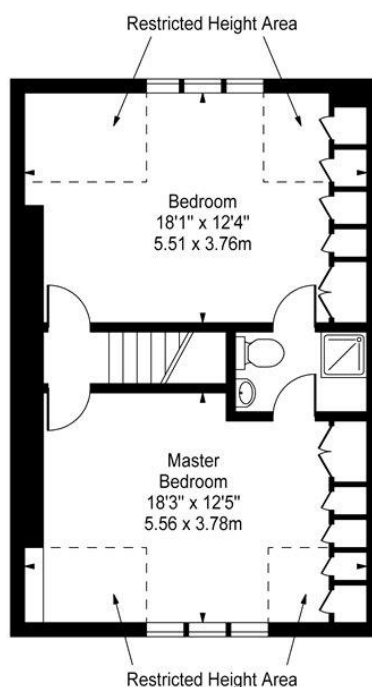
Montpelier Grove, NW5



First Floor



Second Floor



Third Floor

Approx Gross Internal Area **1260 Sq Ft - 117.05 Sq M**
(Including Restricted Height Area)

For Illustration Purposes Only - Not To Scale
www.goldlens.co.uk
Ref. No. 008801J

