



Holmes Road

Kentish Town, NW5

A one bedroom apartment set in a striking modern block in the heart of Kentish Town. The property comprises; an open plan kitchen and reception room with French doors and Juliet balcony, double bedroom and a bathroom.



Holmes Road

Kentish Town, NW5

- A One Bedroom Third Floor Modern Apartment
- Open Plan Kitchen & Reception Room
- A bright Well Maintained Modern Block
- Excellently Located



A superb one bedroom apartment set on the third floor of a striking modern block located in the heart of bustling Kentish Town. The property comprises; an open plan kitchen and reception room with delightful French doors and Juliet balcony, double bedroom and a smart bathroom.

This bright and well thought out property has a practical layout and is in good order throughout. Offered on a furnished basis.

Well located moments from Kentish Town Road with its mix of shops, supermarkets, restaurants and bars which create a vibrant and colourful local scene. Envious transport links are within easy

Minimum Term: 12 months
Deposit Required: £2,423.08
Local Authority: Camden
Council Tax Band: C
EPC Rating: B
Furnished

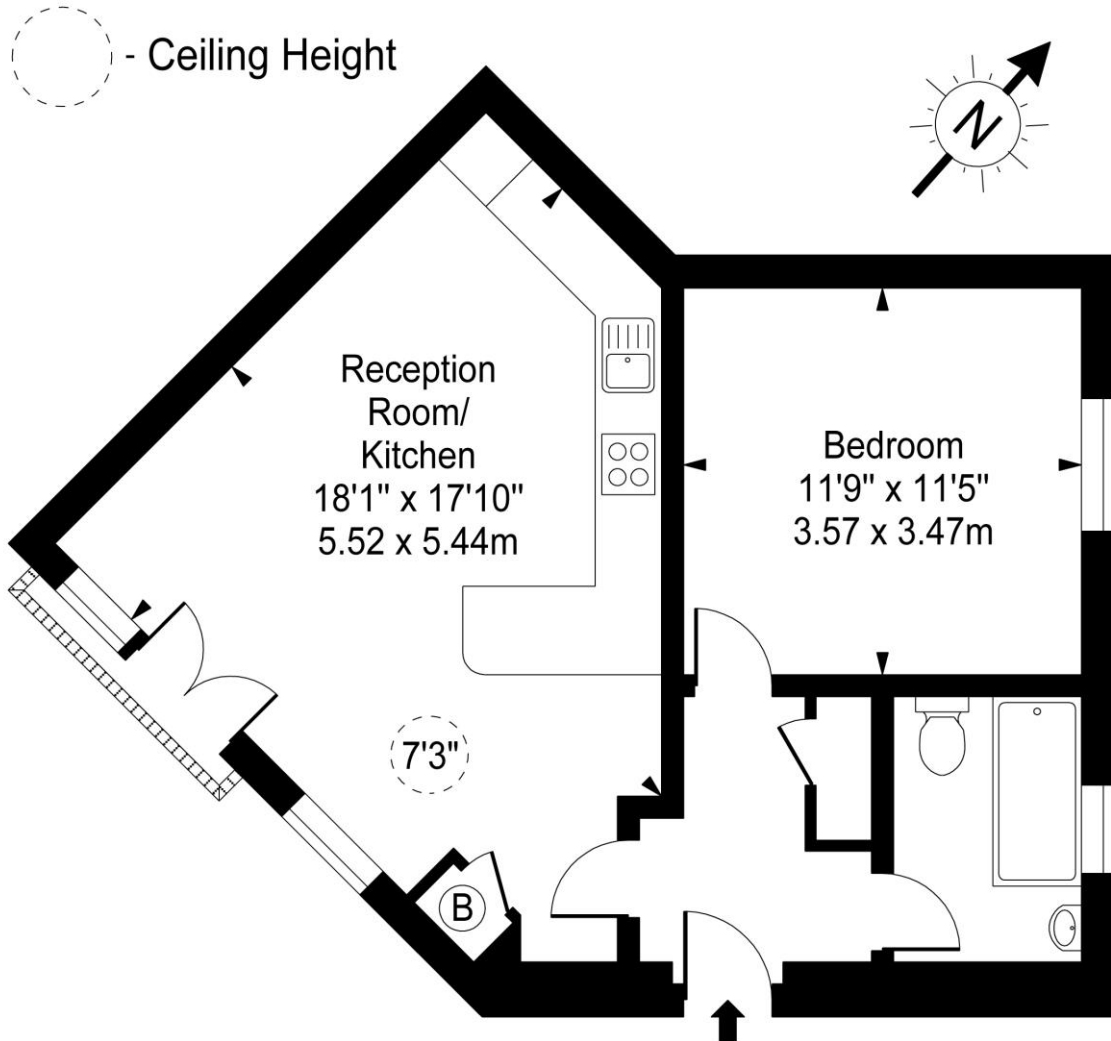
| Energy Efficiency Rating | | |
|---|---------|-----------|
| | Current | Potential |
| Very energy efficient - lower running costs | | |
| A (94-100) | | |
| B (81-93) | 82 | 82 |
| C (69-80) | | |
| D (55-68) | | |
| E (39-54) | | |
| F (21-38) | | |
| G (1-20) | | |
| Not energy efficient - higher running costs | | |
| England, Scotland & Wales EU Directive 2002/91/EC | | |

Chestertons Kentish Town Lettings

225 Kentish Town Road
 London
 NW5 2JU
kentishtownlettingsusers@chestertons.co.uk
 02072671010
chestertons.co.uk

Additional tenant charges apply (fees apply to non-AST tenancies only)
 Tenancy Agreement Fee: £300
 References per Tenant/Guarantor: £60
 Inventory check (approx. £100 – £250 inc. VAT)
chestertons.co.uk/property-to-rent/applicable-fees

Simone House, Holmes Road, NW5



Third Floor

Approx Gross Internal Area **533 Sq Ft - 49.52 Sq M**

For Illustration Purposes Only - Not To Scale

www.goldlens.co.uk

Ref. No. 013988MiV

