



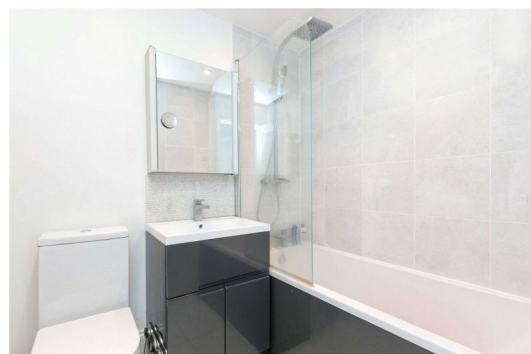
Alma Street

Kentish Town, NW5

£475 per week
(£2,058.33 pcm)

A charming two bedroom maisonette arranged over the upper two floors of a delightful mid terraced Victorian property. Cleverly arranged with an imposing living room, kitchen and bathroom on the first floor and the two bedrooms on the upper floor.

CHESTERTONS



Alma Street

Kentish Town, NW5

- Charming Two Bedroom Apartment
- Bright & Spacious Reception Room
- Separate Kitchen
- Modern bathroom
- Located in Highly Sought After Residential Enclave



A beautiful two bedroom flat arranged over the upper two floors of a delightful mid terraced Victorian property located on one of Kentish Town's most desirable roads.

Cleverly arranged with an imposing living room, the property has a brand new kitchen and bathroom on the first floor, with the two bedrooms located on the upper floors. The property is conveniently located for easy access to the many facilities and transport links of Kentish Town.

Tenure: To be advised
Unfurnished

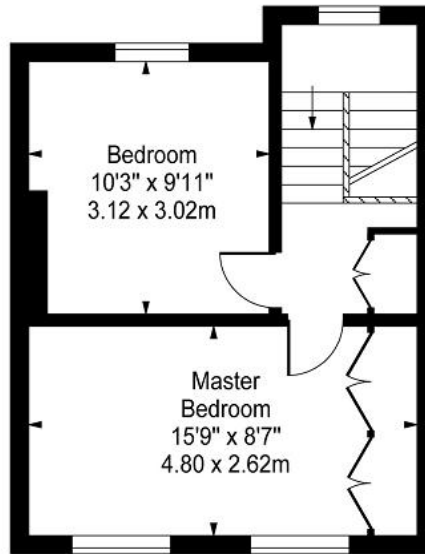
Additional tenant charges apply (fees apply to non-AST tenancies only)
Tenancy Agreement Fee: £300
References per Tenant/Guarantor: £60
Inventory check (approx. £100 – £250 inc. VAT)
[chestertons.com/property-to-rent/applicable-fees](https://www.chestertons.com/property-to-rent/applicable-fees)

Energy Efficiency Rating		
	Current	Potential
Very energy efficient - lower running costs		
(92 plus) A		
(81-91) B		
(69-80) C		
(55-68) D		
(49-54) E	54	61
(21-38) F		
(1-20) G		
Not energy efficient - higher running costs		
England & Wales		EU Directive 2002/91/EC

Chestertons Kentish Town Lettings

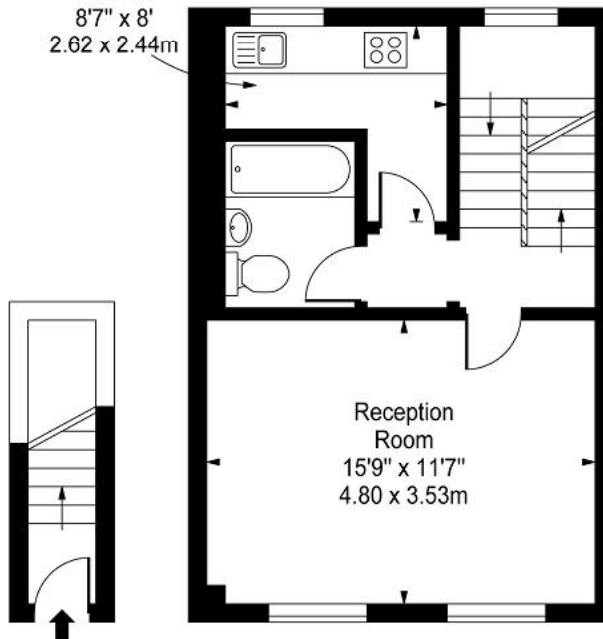
225 Kentish Town Road
London
NW5 2JU
lettings.kentishtown@chestertons.com
02072671010
[chestertons.com](https://www.chestertons.com)

**Alma Street,
Kentish Town, NW5 3DJ**

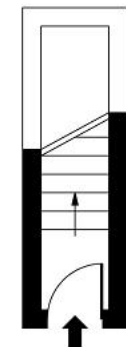


Second Floor

Kitchen
8'7" x 8'
2.62 x 2.44m



First Floor



Ground Floor
Entrance

Approx Gross Internal Area 692 Sq Ft - 64.29 Sq M

For Illustration Purposes Only - Not To Scale

Floor Plan by www.bpmmediagroup.com

Ref: No. P44037