



Tiltman Place

London, N7

£1,650 pcm

A bright and spacious one-bedroom apartment set in this fantastic modern development which benefits from having 24-hour concierge and is offered on an unfurnished basis available for immediate occupation. The property also enjoys a private patio.



Tiltman Place

London, N7

- A One-Bedroom Modern Apartment
- Open Plan Kitchen & Reception Room
- Modern Bathroom
- Private Patio Area
- 24-Hour Concierge



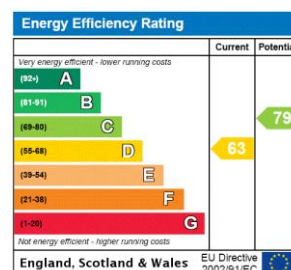
A bright and spacious one-bedroom apartment set on the ground floor and located within the old Hornsey swimming baths of this popular modern development moments from Finsbury Park. The accommodation comprises; an open plan kitchen and reception room with floor to ceiling windows, wooden floors and private patio area, double bedroom with built in storage and a bathroom.

This fantastic modern apartment further benefits from having 24-hour concierge and lift access and is offered on an unfurnished basis available for immediate occupation.

Well located for the many amenities and transport links of Finsbury Park (Victoria Line & National Rail) and Holloway Road (Piccadilly Line) stations.

Tenure: Long Let
Unfurnished

Additional tenant charges apply (fees apply to non-AST tenancies only)
Tenancy Agreement Fee: £300
References per Tenant/Guarantor: £60
Inventory check (approx. £100 – £250 inc. VAT)
[chestertons.com/property-to-rent/applicable-fees](https://www.chestertons.com/property-to-rent/applicable-fees)

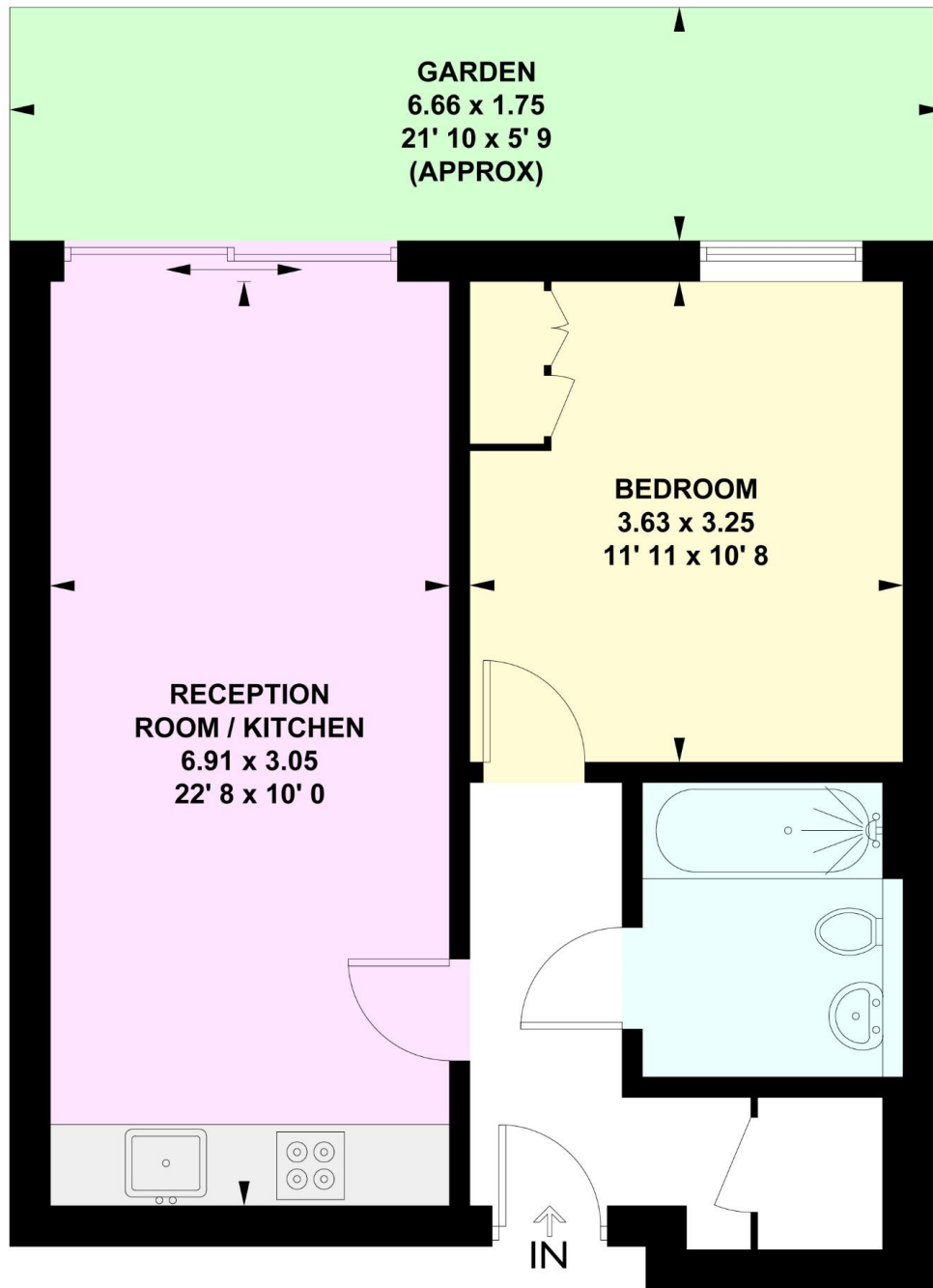


Chestertons Kentish Town Lettings

225 Kentish Town Road
London
NW5 2JU
lettings.kentishtown@chestertons.com
02072671010
[chestertons.com](https://www.chestertons.com)

Tiltman Place

Approximate Gross Internal Area = 489 sq ft / 45.4 sq m



Ground Floor

This plan is not to scale and must be used as layout guidance only. All measurements and areas are approximate and should not be relied upon to provide accurate information. This plan must not be relied upon when making property valuations, design considerations or any other such relevant decisions. We accept no responsibility or liability (whether in contract, tort or otherwise) in relation to any loss whatsoever arising from or in connection with any use of this plan or the adequacy, accuracy or completeness of it or any information within it.

