



# Tiltman Place

London, N7

£430 per week  
(£1,863.33 pcm)

A fantastic two bedroom, two bathroom apartment located in a new development on the site of the old Hornsey Baths. The property boasts modern fixtures and fittings and a large open plan kitchen and reception room complemented by a bright balcony.



# Tiltman Place

London, N7

- Apartment In Period Landmark Building With Concierge
- 2 Double Bedrooms & 2 Bathrooms
- Sizeable Reception Kitchen
- Top Floor & Private Balcony
- EPC Rating C



A fantastic modern top floor two bedroom, two bathroom apartment located in a new development on the site of the old Hornsey Baths, moments from Finsbury Park (Victoria Line & National Rail) and Holloway Road (Piccadilly Line) stations. The property boasts modern fixtures and fittings, two double bedrooms, one with an en-suite, a large open plan kitchen and a reception room complemented by a bright balcony.

The property further benefits from having 24 hour concierge

EPC Rating C

**Tenure:** To be advised  
**Unfurnished**

Additional tenant charges apply (fees apply to non-AST tenancies only)  
 Tenancy Agreement Fee: £300  
 References per Tenant/Guarantor: £60  
 Inventory check (approx. £100 – £250 inc. VAT)  
[chestertons.com/property-to-rent/applicable-fees](https://www.chestertons.com/property-to-rent/applicable-fees)

Energy Efficiency Rating		Current	Potential
Very energy efficient - lower running costs	A		
(91-101)	B		
(81-90)	C	72	73
(61-80)	D		
(51-60)	E		
(31-50)	F		
(1-20)	G		
Not energy efficient - higher running costs			
England, Scotland & Wales		EU Directive 2002/91/EC	

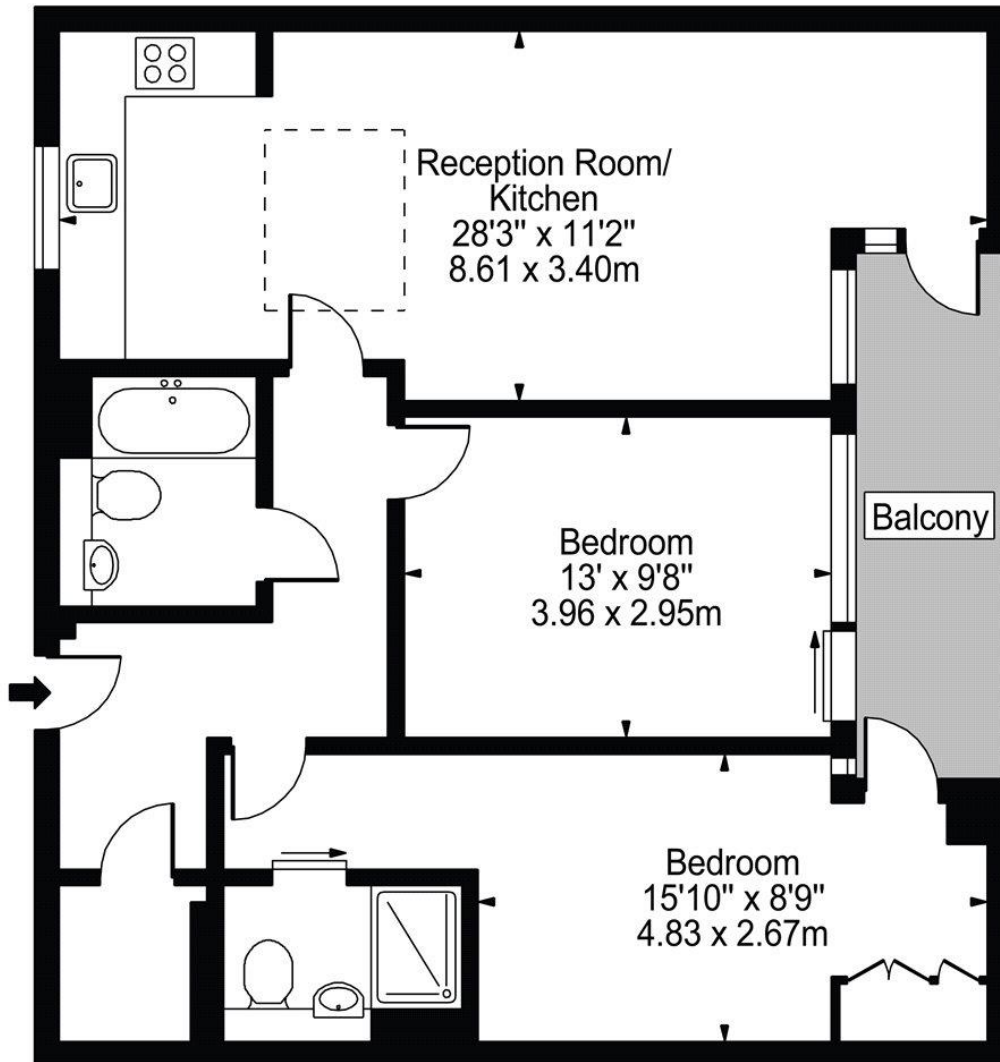
### Chestertons Kentish Town Lettings

225 Kentish Town Road  
 London  
 NW5 2JU  
[lettings.kentishtown@chestertons.com](mailto:lettings.kentishtown@chestertons.com)  
 02072671010  
[chestertons.com](https://www.chestertons.com)

# Tiltman Place, N7



Approx. Gross Internal Area 786 Sq Ft - 73.02 Sq M



## Second Floor

For Illustration Purposes Only - Not To Scale

This floor plan should be used as a general outline for guidance only and does not constitute in whole or in part an offer or contract. Any intending purchaser or lessee should satisfy themselves by inspection, searches, enquiries and full survey as to the correctness of each statement. Any areas, measurements or distances quoted are approximate and should not be used to value a property or be the basis of any sale or let.