

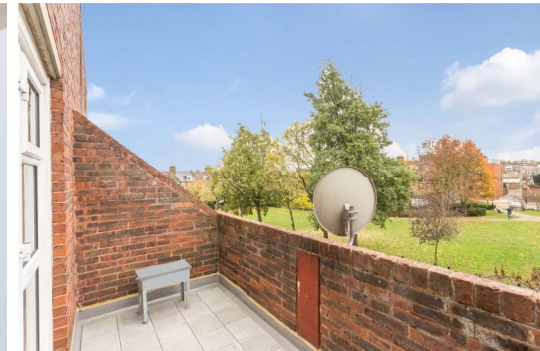


# Mowatt Close

London, N19

£2,000 pcm

A well presented three bedroom maisonette situated on the second and third floor within a secure purpose built development. The property comprises; spacious reception room with a private balcony, separate eat-in kitchen, three bedrooms and a bathroom



# Mowatt Close

London, N19

- Three Bedroom Split Level Apartment
- Spacious Reception Room
- Eat-in Kitchen
- Two Double Bedrooms & single Bedroom
- Modern Bathroom
- Private Balcony



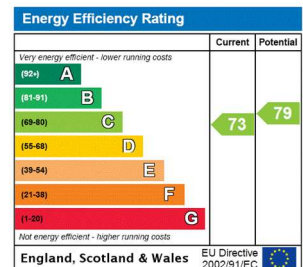
This well presented three bedroom maisonette is situated on the second and third floor within this secure purpose built development. The property comprises; spacious reception room with direct access to a private balcony, separate eat-in kitchen, two double bedrooms, a third single bedroom/study and a modern bathroom.

The property further benefits from wooden flooring, an abundance of natural light and spacious accommodation throughout, whilst the rent is also inclusive of heating and hot water.

The property is offered furnished or unfurnished and is available from early August. Mowatt Close is ideally situated moments away

**Tenure:** To be advised  
**Furnished, Part Furnished,**  
 . . . . .

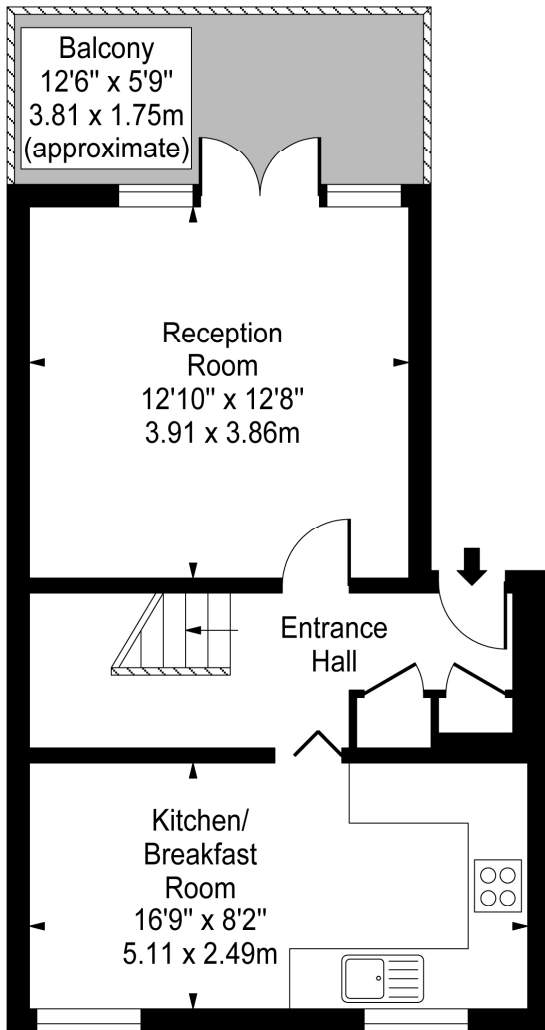
Additional tenant charges apply (fees apply to non-AST tenancies only)  
 Tenancy Agreement Fee: £300  
 References per Tenant/Guarantor: £60  
 Inventory check (approx. £100 – £250 inc. VAT)  
[chestertons.com/property-to-rent/applicable-fees](https://www.chestertons.com/property-to-rent/applicable-fees)



**Chestertons Kentish Town Lettings**

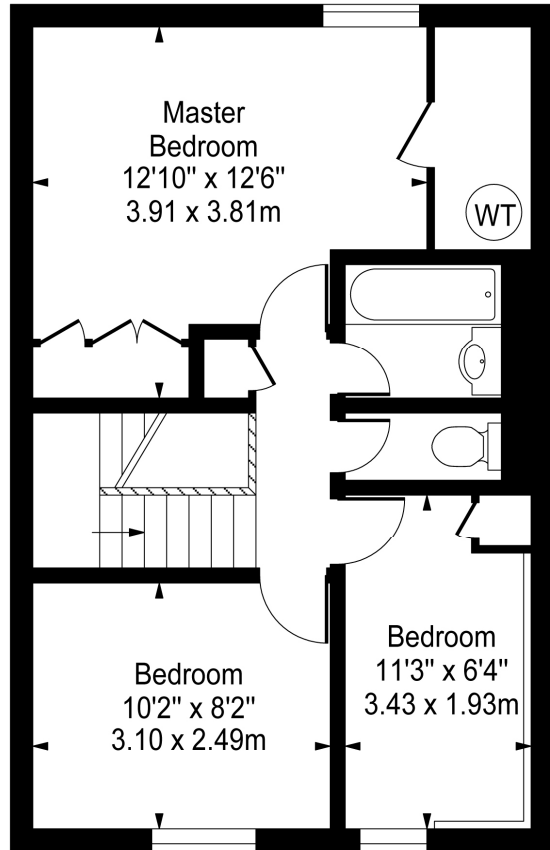
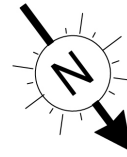
225 Kentish Town Road  
 London  
 NW5 2JU  
[lettings.kentishtown@chestertons.com](mailto:lettings.kentishtown@chestertons.com)  
 02072671010  
[chestertons.com](https://www.chestertons.com)

# Mowatt Close



Second Floor

Gross Internal Area - 398 Sq Ft - 36.97 Sq M



Third Floor

Gross Internal Area - 445 Sq Ft - 41.34 Sq M

**Approx Gross Internal Area 843 Sq Ft - 78.31 Sq M**

For Illustration Purposes Only - Not To Scale

[www.goldlens.co.uk](http://www.goldlens.co.uk)

Ref. No. 008955Ga

