



Queens Crescent

Camden, NW5

£2,200 per month
(£507.69 per week)

A well-presented two double bedroom apartment set over the second floor of a secure purpose built development. The property comprises; a bright reception leading onto a fitted kitchen, two double bedrooms with built-in storage and shower room.



Queens Crescent

Camden, NW5

- Two Bedroom Second Floor Apartment
- Bright Reception Room & Fitted Kitchen
- Two Double Bedrooms With Storage
- Modern Shower Room
- Situated Between Chalk Farm and Kentish Town
- HEATING & HOT WATER INCLUDED IN RENT

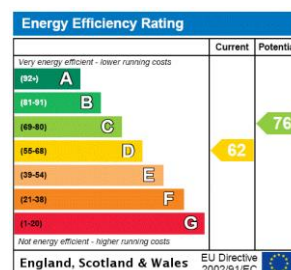


A well-presented two double bedroom apartment set over the second floor of a secure purpose built development. The property comprises; a bright reception leading onto a fitted kitchen, two double bedrooms both with an abundance of storage and modern shower room.

This bright property enjoys lots of natural light and has wood flooring throughout, and the heating and hot water are included within the rent. Offered on a part furnished basis and available from September.

Conveniently located on a quiet residential street close to both Chalk

Minimum Term: months
Deposit Required: £2,538.46
Local Authority: London Borough Of Camden
Council Tax Band: B
EPC Rating: D
Furnished



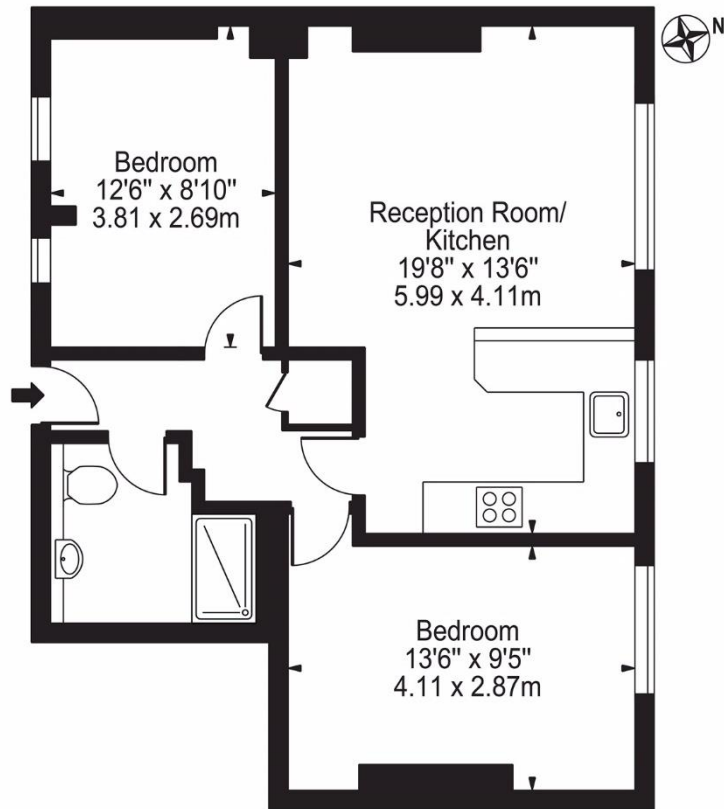
Chestertons Kentish Town Lettings

225 Kentish Town Road
 London
 NW5 2JU
 lettings.kentishtown@chestertons.co.uk
 02072671010
 chestertons.co.uk

Additional tenant charges apply (fees apply to non-AST tenancies only)
 Tenancy Agreement Fee: £300
 References per Tenant/Guarantor: £60
 Inventory check (approx. £100 – £250 inc. VAT)
 chestertons.co.uk/property-to-rent/applicable-fees

Queens Crescent, NW5

Approx. Gross Internal Area 613 Sq Ft - 56.95 Sq M



Second Floor

For Illustration Purposes Only - Not To Scale

This floor plan should be used as a general outline for guidance only and does not constitute in whole or in part an offer or contract. Any intending purchaser or lessee should satisfy themselves by inspection, searches, enquiries and full survey as to the correctness of each statement. Any areas, measurements or distances quoted are approximate and should not be used to value a property or be the basis of any sale or let.

