



Mayton Street

London, N7

£750 per week
(£3,250 pcm)

A five bedroom period house located on a quiet tree lined street. The property comprises; reception room, open plan kitchen/dining room, five double bedrooms and two bathrooms. Benefiting from a private rear garden, off street parking and a garage.



Mayton Street

London, N7

- A Five Bedroom Period House
- Two Reception Rooms
- Eat-In Kitchen
- Two Bathrooms
- Private Garden



A five bedroom period house located on a quiet tree lined street. The property comprises; reception room, open plan kitchen and dining room, five double bedrooms and two bathrooms.

This spacious and bright home also has a private rear garden, off street parking space and a garage. Offer on a part furnished basis and available for immediate occupation.

Well located for access to the many amenities and transport links and open green spaces of Finsbury Park.

Tenure: To be advised

Additional tenant charges apply (fees apply to non-AST tenancies only)
 Tenancy Agreement Fee: £300
 References per Tenant/Guarantor: £60
 Inventory check (approx. £100 – £250 inc. VAT)
[chestertons.com/property-to-rent/applicable-fees](https://www.chestertons.com/property-to-rent/applicable-fees)

Energy Efficiency Rating		Current	Potential
Very energy efficient - lower running costs			
(92-)	A		
(81-91)	B		
(69-80)	C		80
(55-68)	D	62	
(39-54)	E		
(21-38)	F		
(1-20)	G		
Not energy efficient - higher running costs			
England, Scotland & Wales		EU Directive 2002/91/EC	

Chestertons Kentish Town Lettings

225 Kentish Town Road

London

NW5 2JU

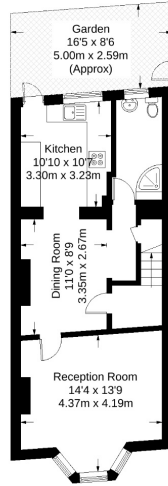
lettings.kentishtown@chestertons.com

02072671010

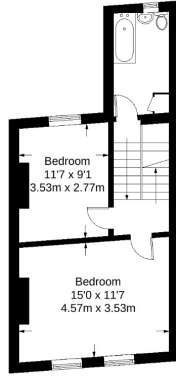
[chestertons.com](https://www.chestertons.com)

Mayton Street

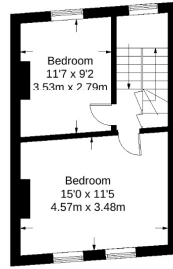
Total Area (Including Eaves) = 1641 sq ft / 152.5 sq m
 Approximate Gross Internal Area = 1539 sq ft / 143 sq m
 Eaves = 102 sq ft / 9.5 sq m



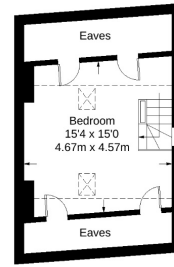
Ground Floor
516 sq ft / 47.9 sq m



First Floor
424 sq ft / 39.4 sq m



Second Floor
353 sq ft / 32.8 sq m



Second Floor
348 sq ft / 32.3 sq m

Not to scale, for guidance only and must not be relied upon as a statement of fact.
 All measurements and areas are approximate only and have been prepared in accordance with the current edition of the RICS Code of Measuring Practice.