

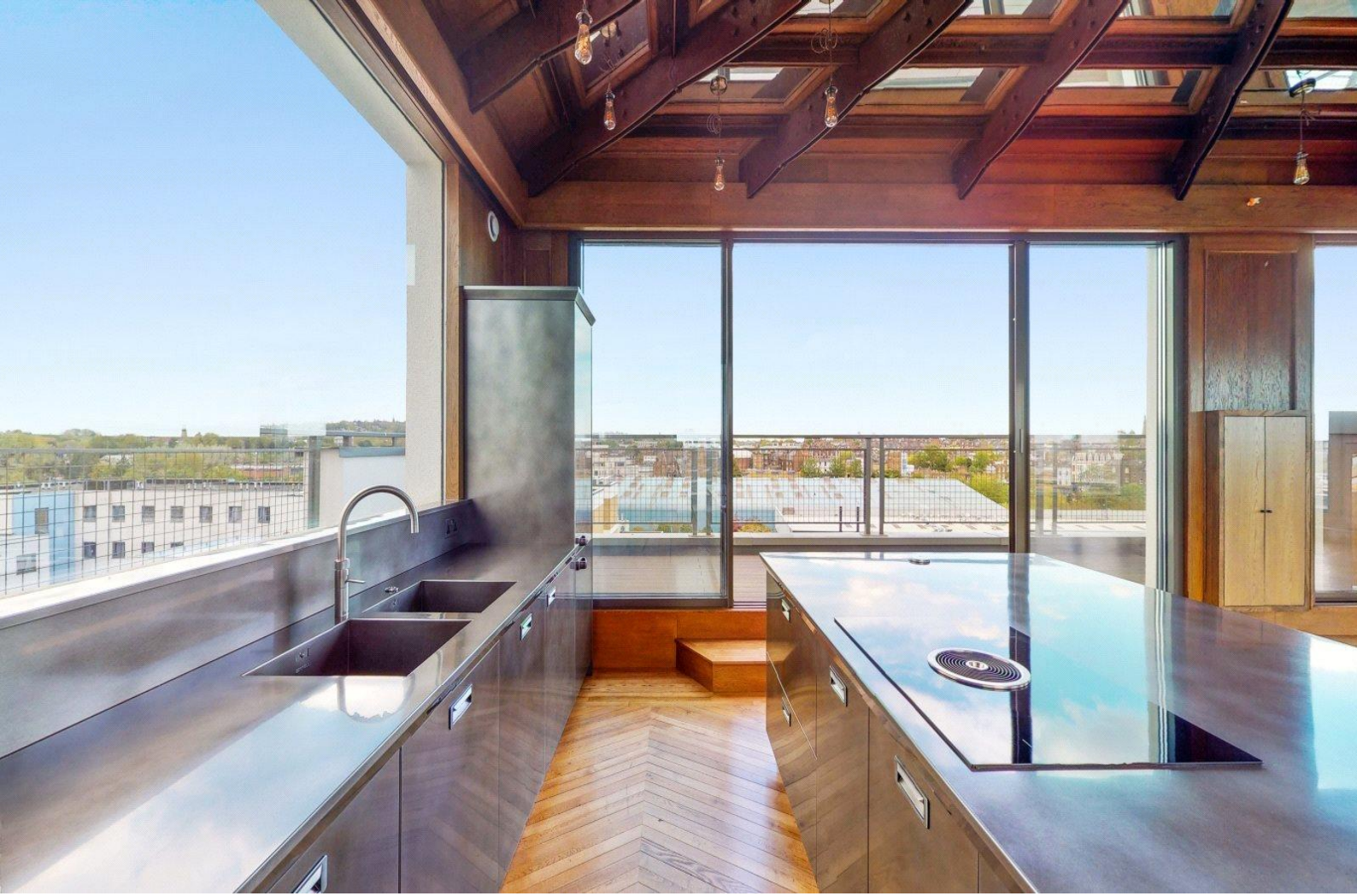


# Holmes Road

Kentish Town, NW5

£12,999 per month  
(£2,999.77 per week)

Situated on the fifth and sixth floor of a contemporary building. The apartment has over 3,000 sq ft of internal living space, this generous apartment comprises of an open plan reception room/kitchen flooded with natural light.



# Holmes Road

## Kentish Town, NW5

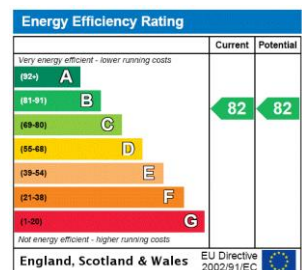
- North West London, excellent location in Kentish Town
- Located on the same street as The French Bilingual College of London.
- Nearest tube station Kentish Town, Camden Town (10 mins. Walk) both on Northern Line
- Numerous bus routes on the door step to The Ci



A simply stunning four double penthouse apartment with amazing 360 degree wrap around terraces providing outstanding views across London.

Situated on the fifth and sixth floor of a contemporary building. The apartment has over 3,000 sq ft of internal living space, this generous apartment comprises of an open plan reception room/kitchen flooded with natural light and impressive floor-to-ceiling windows, master bedroom with en-suite bathroom, walk-in wardrobe and direct access to private terrace, three additional double bedrooms all with en-suite bathrooms, a separate study and an abundance of storage.

**Minimum Term:** 12 months  
**Deposit Required:** £17,998.62  
**Local Authority:** London Borough Of Camden  
**Council Tax Band:** H  
**EPC Rating:** B  
**Unfurnished**



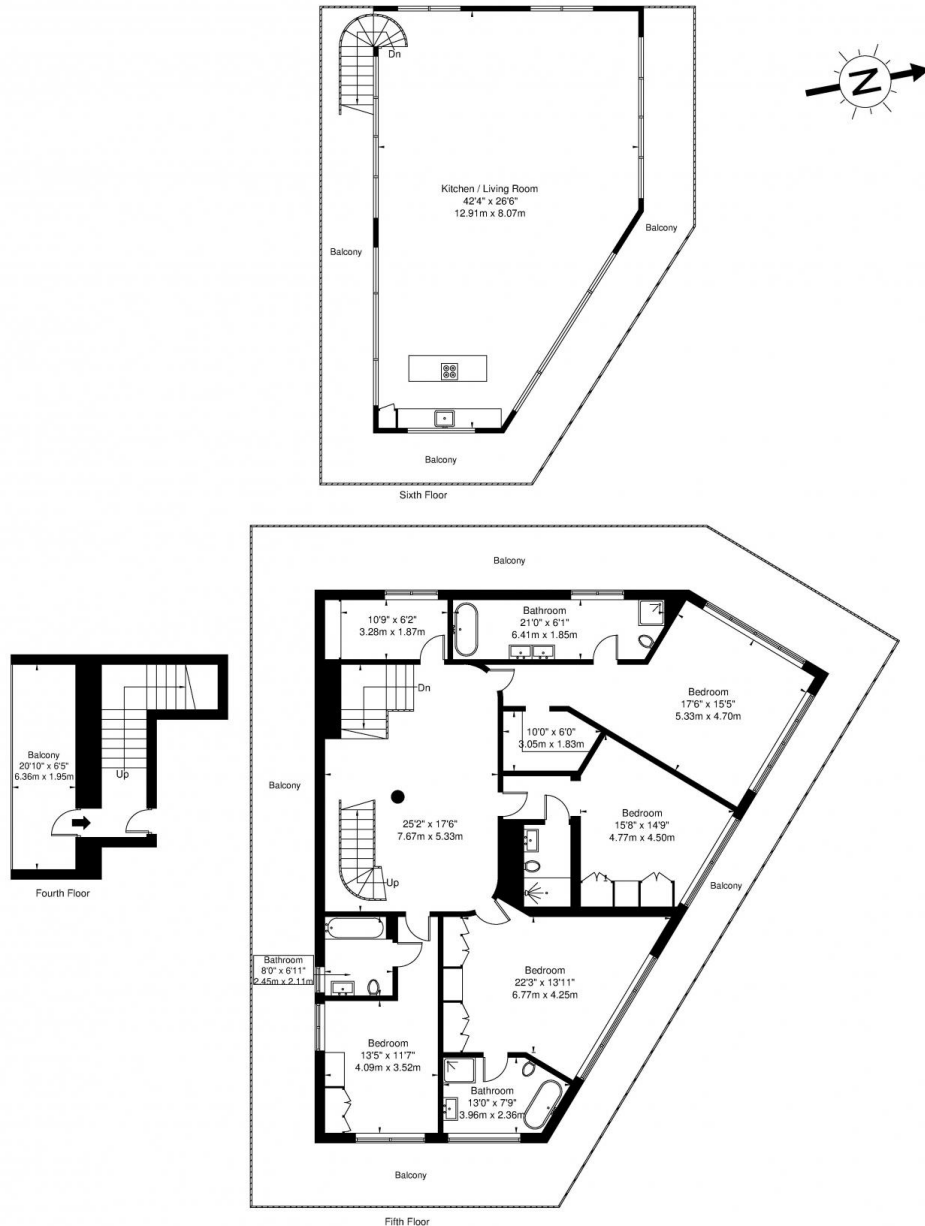
### Chestertons Kentish Town Lettings

225 Kentish Town Road  
 London  
 NW5 2JU  
 kentishtown@chestertons.co.uk  
 02072671010  
 chestertons.co.uk

Additional tenant charges apply (fees apply to non-AST tenancies only)  
 Tenancy Agreement Fee: £300  
 References per Tenant/Guarantor: £60  
 Inventory check (approx. £100 – £250 inc. VAT)  
[chestertons.co.uk/property-to-rent/applicable-fees](http://chestertons.co.uk/property-to-rent/applicable-fees)

# Holmes Road, Kentish town

Approx. Gross Internal Area = 286.3 sq m / 3082 sq ft



Ref

Copyright **BLEU PLAN**

Disclaimer : Floor plan measurements are approximate and are for illustrative purposes only While we do not doubt the floor plan accuracy and completeness, you or your advisors should conduct a careful, independent investigation of the property in respect of monetary valuation

