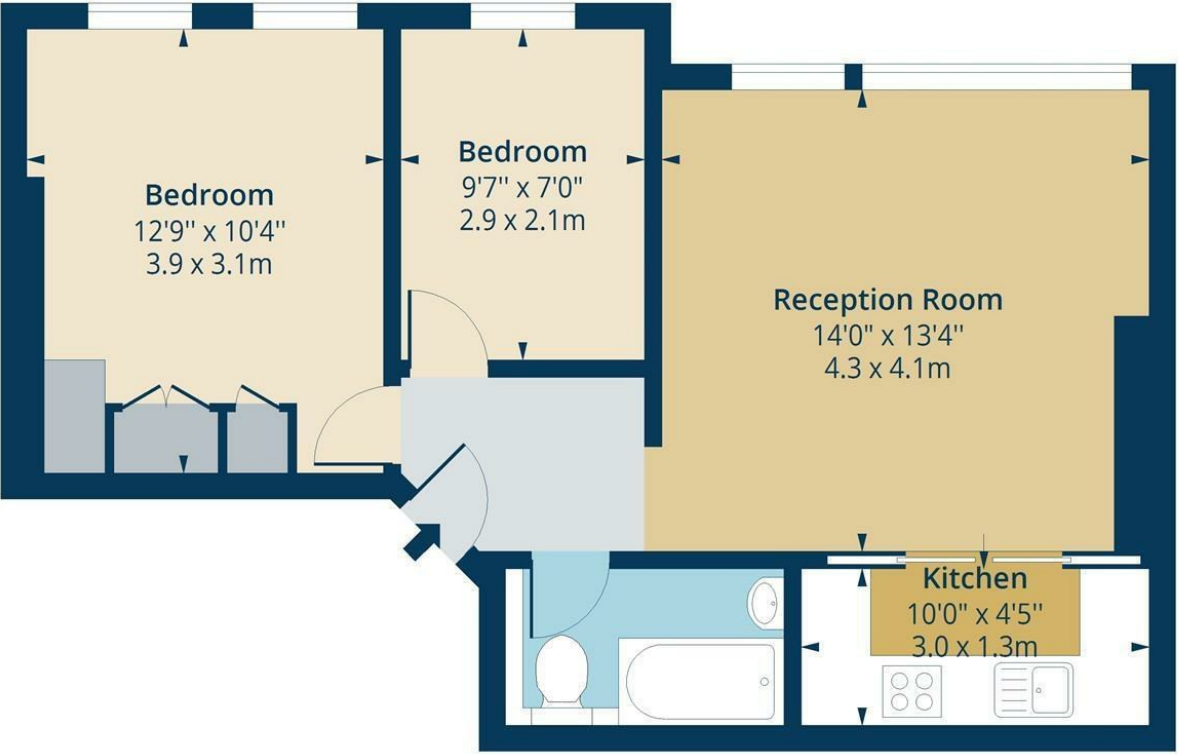


Amhurst Park, N16
Approx. Gross Internal Area 524 Sq Ft - 48.68 Sq M

OAKWOOD



First Floor
Floor Area 524 Sq Ft - 48.68 Sq M
For Illustrational Purposes Only - Not To Scale
lpaplus.com

Whilst every attempt has been made to ensure the accuracy of the floor plan contained here, measurements of doors, windows, rooms and any other items are approximate and no responsibility is taken for any error, omission or mis-statement. This plan is for illustrative purposes only and should be used as such by any prospective purchaser. The services, systems and appliances shown have not been tested and no guarantee as to their operability or efficiency can be given.



£1,800 Per Month

A lovely two bedroom flat set on the first floor of this large double fronted Victorian house. Internally the flat is in good condition and features include stripped floor-boards, sash windows and fireplace. Amhurst Park is very well located for local shops and transport facilities and is within seconds walk of Stamford Hill British Rail Station with easy access into Liverpool Street.

