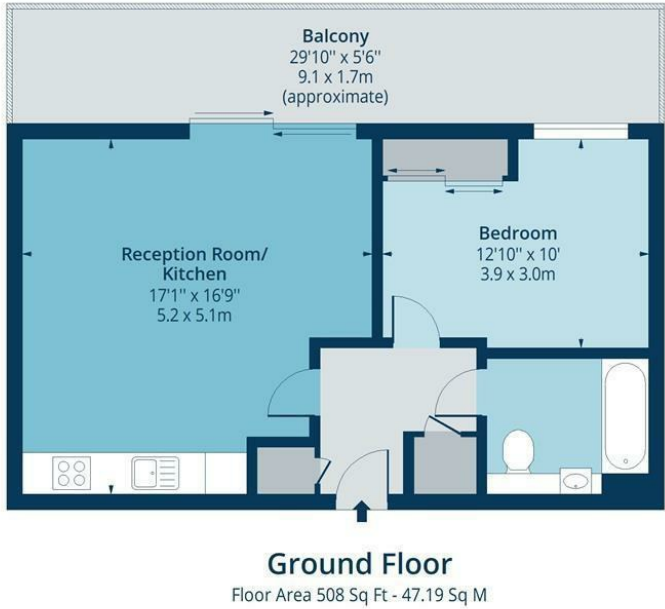



Fyfe Apartments  
Approx. Gross Internal Area 508 Sq Ft - 47.19 Sq M  
Approx. Gross Balcony Area 164 Sq Ft - 15.24 Sq M



 Measured according to RICS IPMS2. Floor plan is for illustrative purposes only and is not to scale. Every attempt has been made to ensure the accuracy of the floor plan shown, however all measurements, fixtures, fittings and data shown are an approximate interpretation for illustrative purposes only. 1 sq m = 10.76 sq feet.  
[ipaplus.com](http://ipaplus.com)

Whilst every attempt has been made to ensure the accuracy of the floor plan contained here, measurements of doors, windows, rooms and any other items are approximate and no responsibility is taken for any error, omission or mis-statement. This plan is for illustrative purposes only and should be used as such by any prospective purchaser. The services, systems and appliances shown have not been tested and no guarantee as to their operability or efficiency can be given.



While we endeavor to make our sales details accurate and reliable, if there is any point which is of particular importance to you, please contact the office and we will be pleased to confirm the position for you. Particularly if contemplating traveling some distance to view the property. All room sizes have been measured with an electronic sonic tape, the accuracy of which cannot be guaranteed. You are advised to make your own checks before contemplating a purchase, especially if an exact measurement is of particular importance to you.



Chadwell Lane, N8



£330,000 Leasehold

A stunning one bedroom apartment set within Fyfe House the sought after New River Village development. The property benefits from a spacious open plan reception room opening onto a large private patio with river view, a modern kitchen, bright bedroom and contemporary bathroom. On-site facilities include a resident's gym with sauna and steam room and a 24 hour concierge service.

The development is undergoing some improvement works to some communal areas, which include; internal lighting upgrades, redecoration of communal areas, and new flooring in hallways (expected completion mid-end July 2025).

New River Village is Located within a few minutes walk of shops, bars and restaurants on Hornsey High Street and Crouch End Broadway. For easy transport into central London Hornsey train station and Turnpike Lane tube station (Piccadilly Line) are very close by.

[oakwoodestateagents.com](http://oakwoodestateagents.com)

48 Stoke Newington Church Street  
London N16 0NB  
Company No. 2995463, Oakwood Estate Agents Limited T/A Oakwood

Tel 020 7249 1000  
Fax 020 7249 2000  
[www.oakwoodestateagents.com](http://www.oakwoodestateagents.com)



