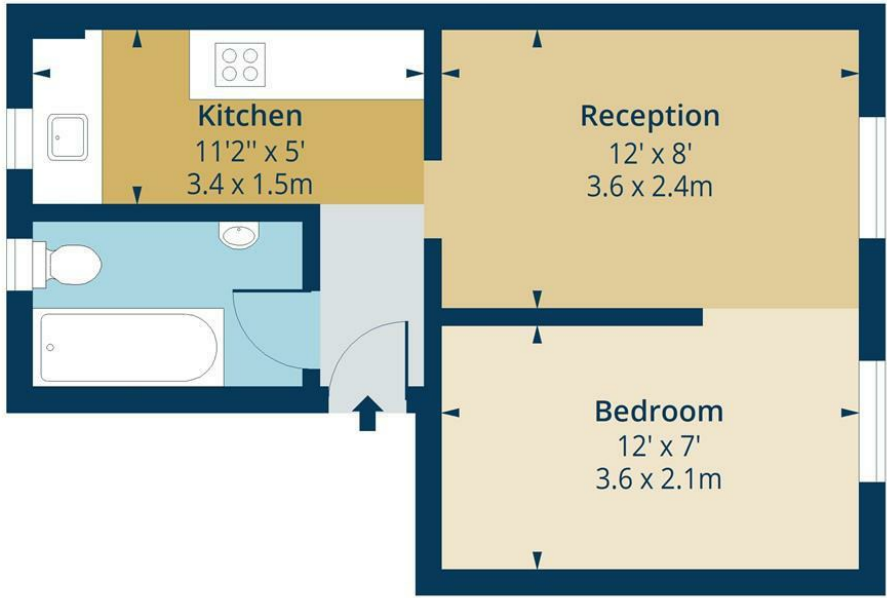


Shakspeare Walk , N16
Approx. Gross Internal Area 306 Sq Ft - 28.43 Sq M



First Floor

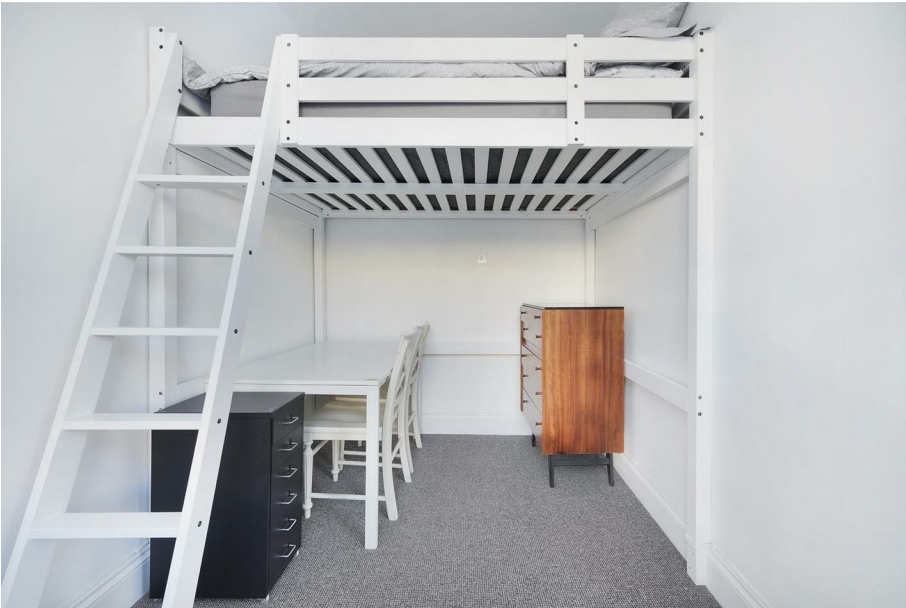
Floor Area 306 Sq Ft - 28.43 Sq M



Measured according to RICS IPMS2. Floor plan is for illustrative purposes only and is not to scale. Every attempt has been made to ensure the accuracy of the floor plan shown, however all measurements, fixtures, fittings and data shown are an approximate interpretation for illustrative purposes only. 1 sq m = 10.76 sq feet.
lpaplus.com

Date: 27/3/2025

Whilst every attempt has been made to ensure the accuracy of the floor plan contained here, measurements of doors, windows, rooms and any other items are approximate and no responsibility is taken for any error, omission or mis-statement. This plan is for illustrative purposes only and should be used as such by any prospective purchaser. The services, systems and appliances shown have not been tested and no guarantee as to their operability or efficiency can be given.



While we endeavor to make our sales details accurate and reliable, if there is any point which is of particular importance to you, please contact the office and we will be pleased to confirm the position for you. Particularly if contemplating traveling some distance to view the property. All room sizes have been measured with an electronic sonic tape, the accuracy of which cannot be guaranteed. You are advised to make your own checks before contemplating a purchase, especially if an exact measurement is of particular importance to you.



Shakspeare Walk, N16



£1,600 Per Month

A bright and airy studio flat with a separate sleeping area, located on one of Stoke Newington's well-regarded roads. The flat is in good condition, featuring high ceilings and large original sash windows that bring in plenty of natural light.

Shakespeare Walk is centrally located, within walking distance of Church Street, the High Street, and Newington Green, with plenty of shops, cafes, and transport links nearby.

The flat is available furnished or unfurnished and ready to move into now.

oakwoodestateagents.com

48 Stoke Newington Church Street
London N16 0NB
Company No. 2995463, Oakwood Estate Agents Limited T/A Oakwood

Tel 020 7249 1000
Fax 020 7249 2000
www.oakwoodestateagents.com

