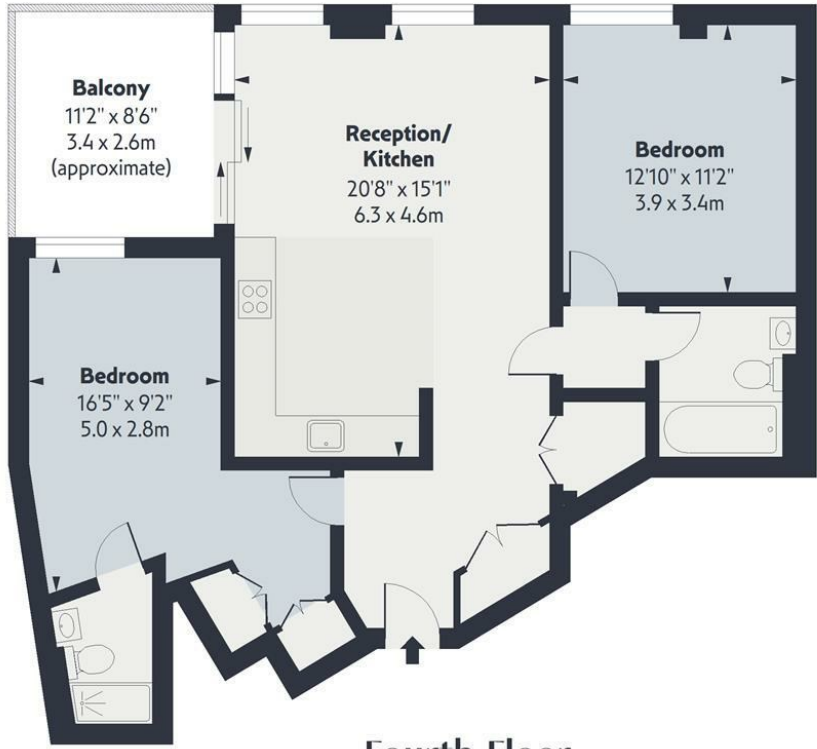


Willowbrook House, N4

Approx. Gross Internal Area 866 Sq Ft - 80.45 Sq M
Approx. Gross Balcony Area 103 Sq Ft - 9.57 Sq M

OAKWOOD



Fourth Floor
Floor Area 866 Sq Ft - 80.45 Sq M



Measured according to RICS IPMS2. Floor plan is for illustrative purposes only and is not to scale. Every attempt has been made to ensure the accuracy of the floor plan shown, however all measurements, fixtures, fittings and data shown are an approximate interpretation for illustrative purposes only. 1 sq m = 10.76 sq feet.

lpaplus.com

Date: 7/2/2025

Whilst every attempt has been made to ensure the accuracy of the floor plan contained here, measurements of doors, windows, rooms and any other items are approximate and no responsibility is taken for any error, omission or mis-statement. This plan is for illustrative purposes only and should be used as such by any prospective purchaser. The services, systems and appliances shown have not been tested and no guarantee as to their operability or efficiency can be given.



While we endeavor to make our sales details accurate and reliable, if there is any point which is of particular importance to you, please contact the office and we will be pleased to confirm the position for you. Particularly if contemplating traveling some distance to view the property. All room sizes have been measured with an electronic sonic tape, the accuracy of which cannot be guaranteed. You are advised to make your own checks before contemplating a purchase, especially if an exact measurement is of particular importance to you.



Coster Avenue, N4



£750,000 Leasehold

This exceptional apartment boasts a sleek, contemporary design with high-end finishes throughout. The spacious reception area and balcony face southwest, flooding the space with natural light and offering beautiful views of the communal garden and West Reservoir. Thoughtful storage solutions, including a utility cupboard, enhance the functionality of the home, while both bedrooms easily accommodate double beds. Residents also enjoy the convenience of a 24-hour concierge, business center, gym, and swimming pool.

Willowbrook House is one of the newest additions to the Woodberry Down development, set along the scenic banks of the West and East Reservoirs and overlooking over 42 acres of serene open water. The development offers a selection of on-site shops, a gastropub, and cafés, with a large retail park nearby. Excellent transport links, including Manor House Station for quick access to central London, and Finsbury Park Station within easy reach, ensure superb connectivity. Plus, the area is surrounded by beautiful green spaces, including Clissold Park, Finsbury Park, and the new Spring Park.

[oakwoodestateagents.com](https://www.oakwoodestateagents.com)

48 Stoke Newington Church Street
London N16 0NB
Company No. 2995463, Oakwood Estate Agents Limited T/A Oakwood

Tel 020 7249 1000
Fax 020 7249 2000
www.oakwoodestateagents.com



- NO ONWARD CHAIN
- 24 HOUR CONCIERGE
- ACCESS TO GYM FACILITIES

- PRIVATE BALCONY
- HIGH SPECIFICATION
- FOURTH FLOOR

