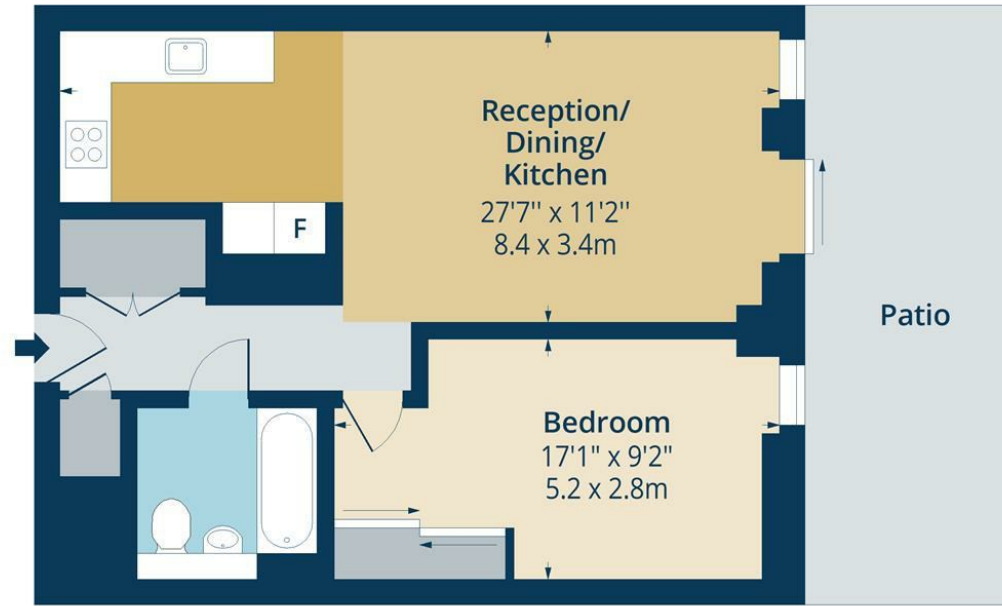


The Shoreline Building, N4

Approx. Gross Internal Area 579 Sq Ft - 53.79 Sq M
 Approx. Gross Patio Area 181 Sq Ft - 16.81 Sq M



Ground Floor

Floor Area 579 Sq Ft - 53.79 Sq M

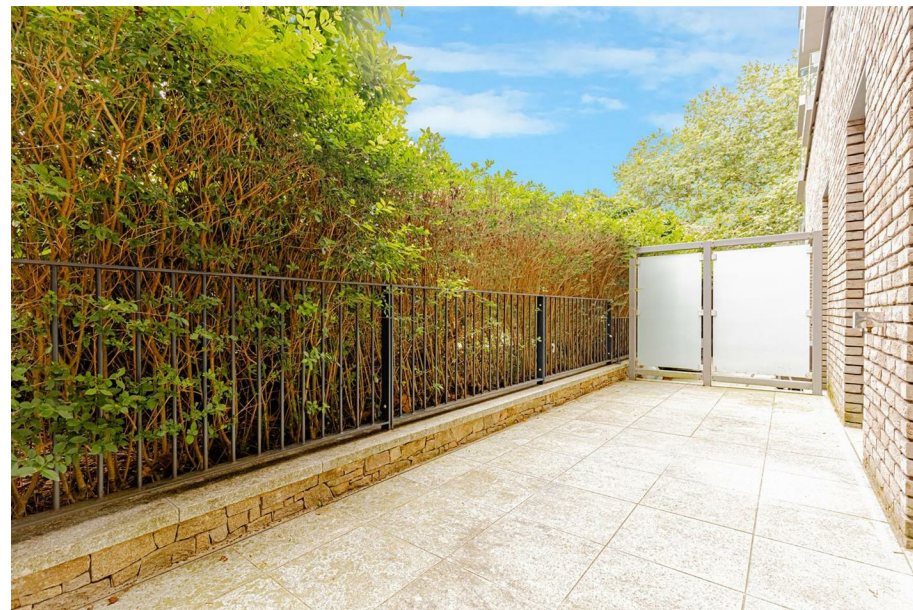


Measured according to RICS IPMS2. Floor plan is for illustrative purposes only and is not to scale. Every attempt has been made to ensure the accuracy of the floor plan shown, however all measurements, fixtures, fittings and data shown are an approximate interpretation for illustrative purposes only. 1 sq m = 10.76 sq feet.

lpaplus.com

Date: 23/7/2024

Whilst every attempt has been made to ensure the accuracy of the floor plan contained here, measurements of doors, windows, rooms and any other items are approximate and no responsibility is taken for any error, omission or mis-statement. This plan is for illustrative purposes only and should be used as such by any prospective purchaser. The services, systems and appliances shown have not been tested and no guarantee as to their operability or efficiency can be given.



The Shoreline Building, 42 Newnton Close, N4



£475,000 Leasehold

Step into this luxurious one-bedroom apartment and experience unparalleled comfort and style. The spacious living area is bathed in natural light, creating a warm and inviting atmosphere. The kitchen, equipped with premium Bosch appliances, is a chef's delight, making meal preparation a pleasure.

The bedroom offers a tranquil haven, designed with relaxation in mind. The luxury bathroom exudes elegance, featuring high-quality fixtures and finishes. Underfloor heating throughout the apartment ensures a cozy living environment, while the private patio provides an outdoor space to unwind and enjoy the fresh air.

Residents of this prestigious development benefit from a range of exclusive amenities. The 24-hour concierge service is on hand to assist with any requests, ensuring a seamless living experience. The on-site gym is perfect for maintaining an active lifestyle without having to leave the comfort of your home.

Surrounded by stunning communal features, including well-maintained gardens and a serene lake, this development offers a unique blend of urban convenience and natural beauty. Its proximity to Manor House tube station makes commuting effortless, while the local area provides a diverse array of amenities and entertainment options.



While we endeavor to make our sales details accurate and reliable, if there is any point which is of particular importance to you, please contact the office and we will be pleased to confirm the position for you. Particularly if contemplating traveling some distance to view the property. All room sizes have been measured with an electronic sonic tape, the accuracy of which cannot be guaranteed. You are advised to make your own checks before contemplating a purchase, especially if an exact measurement is of particular importance to you.

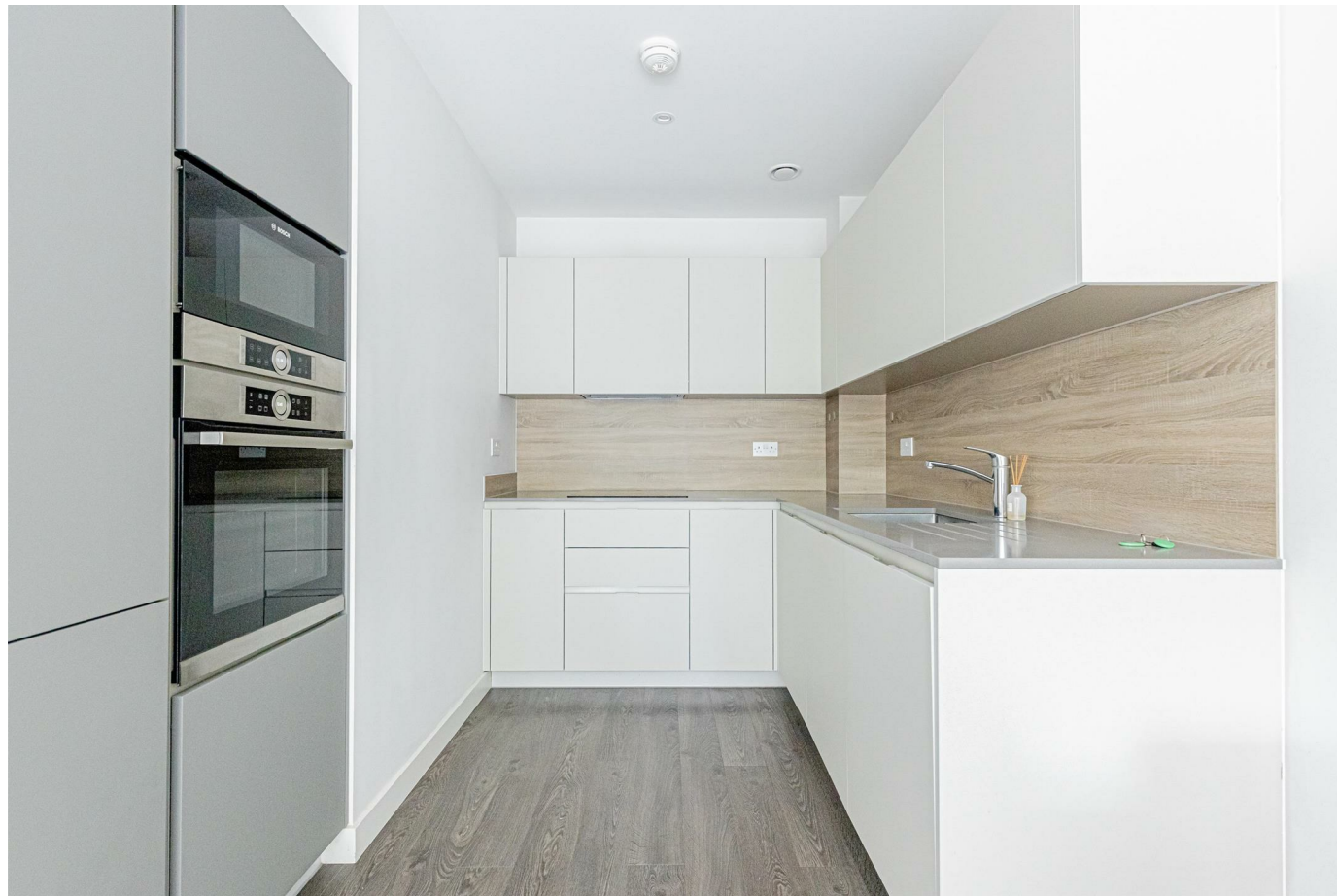
oakwoodestateagents.com

48 Stoke Newington Church Street
 London N16 0NB

Company No. 2995463, Oakwood Estate Agents Limited T/A Oakwood

Tel 020 7249 1000
 Fax 020 7249 2000

www.oakwoodestateagents.com



- PRIME LOCATION
- STUNNING COMMUNAL AREAS
- PATIO GARDEN

- ON-SITE AMENITIES
- HIGH END SPECIFICATIONS
- NO ONWARD CHAIN

