



TENURE TYPE: LEASEHOLD
STUDIO 1 BATHROOM 1 RECEPTION ROOM



An excellent and luxurious studio apartment of 402 sq ft (37.35 sqm), on the second floor (with lift), in The Courthouse, a prestigious and excellently located development in the heart of Westminster.



The property offers a sizeable studio room with an open plan kitchen, a separate bathroom and utility cupboards. Other features include fully integrated appliances, high specification 'walk in' shower suite, underfloor heating, comfort cooling and recessed lighting. Residents of

The Courthouse benefit from concierge service, landscaped gardens and a resident's fitness centre, making this the ideal home or London base.

The Courthouse is enviably situated moments from a wonderful range of boutiques, bars and restaurants in Victoria Street, and close to the beautiful St James's Park and Green Park.



Perfectly situated between St James' Park, Westminster and Pimlico tube stations, and a short walk from Victoria station.





PROPERTY
THE COURTHOUSE, HORSEFERRY ROAD,
WESTMINSTER, LONDON, SW1P

At a glance:

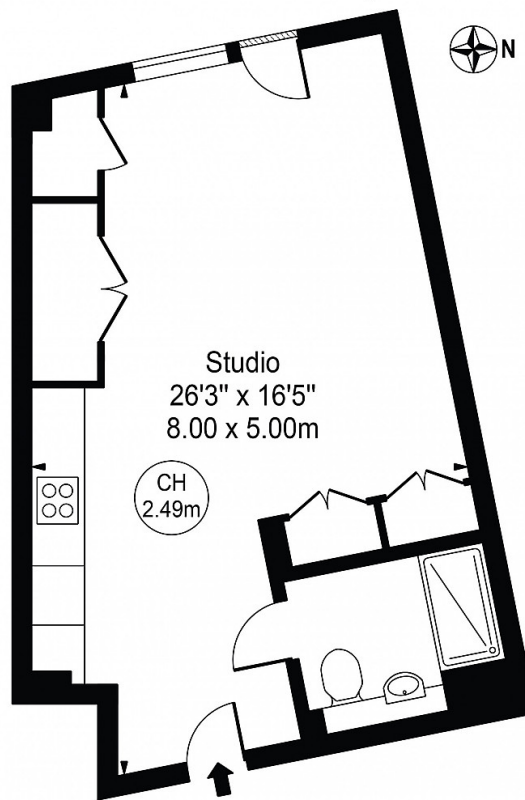
- Chain free
- Concierge
- Close to public transport
- Excellent condition
- Shops and amenities nearby
- Gym
- Lift

Other information:

- Leasehold

The Courthouse

Approx. Gross Internal Area 402 Sq Ft - 37.35 Sq M



Second Floor

For Illustration Purposes Only - Not To Scale

This floor plan should be used as a general outline for guidance only and does not constitute in whole or in part an offer or contract. Any intending purchaser or lessee should satisfy themselves by inspection, searches, enquiries and full survey as to the correctness of each statement. Any areas, measurements or distances quoted are approximate and should not be used to value a property or be the basis of any sale or let. Copyright Morriarti Photography & Design LTD