

Firethorn Close, Edgware, Greater London. HA8 9GF



- 2 Bedrooms
- Modern Building
- 2nd Floor
- Living Room
- Fitted Kitchen
- Bathroom / WC
- Allocated Parking Space
- Close to Shops
- Near Places of Worship

£340,000
Subject To Contract



MELVIN JACOBS ESTATE AGENTS
Sales, Lettings & Block Management

45/47 Manor Park Crescent, Edgware, Middlesex, HA8 7LY
Tel 020 8381 2908 www.melvinjacobs.com





**MELVIN
JACOBS**



These particulars are prepared with all due care and attention for the convenience of intending purchasers but their accuracy is not guaranteed and they do not form any part of a contract. Purchasers must themselves check by inspection or otherwise the accuracy of these particulars prior to signing a contract.

Kitchen/Breakfast Room (10' 4" x 9' 8") or (3.15m x 2.95m)

Lounge/Dining Area (14' 4" x 12' 10") or (4.37m x 3.91m)

Bedroom 1 (11' 11" x 11' 0") or (3.63m x 3.35m)

Bedroom 2 (9' 9" x 8' 10") or (2.97m x 2.69m)

Bathroom

Hallway

Storage Cupboard

Tenure

We are informed that the tenure is Share of Freehold

Council Tax

Council tax band: D

Viewing

Strictly By Appointment Only. Melvin Jacobs, 020 8381 2908

Melvin Jacobs Estate Agents
45 - 47 Manor Park Crescent,
Edgware,
Middlesex,
HA8 7LY

e: info@melvinjacobs.com

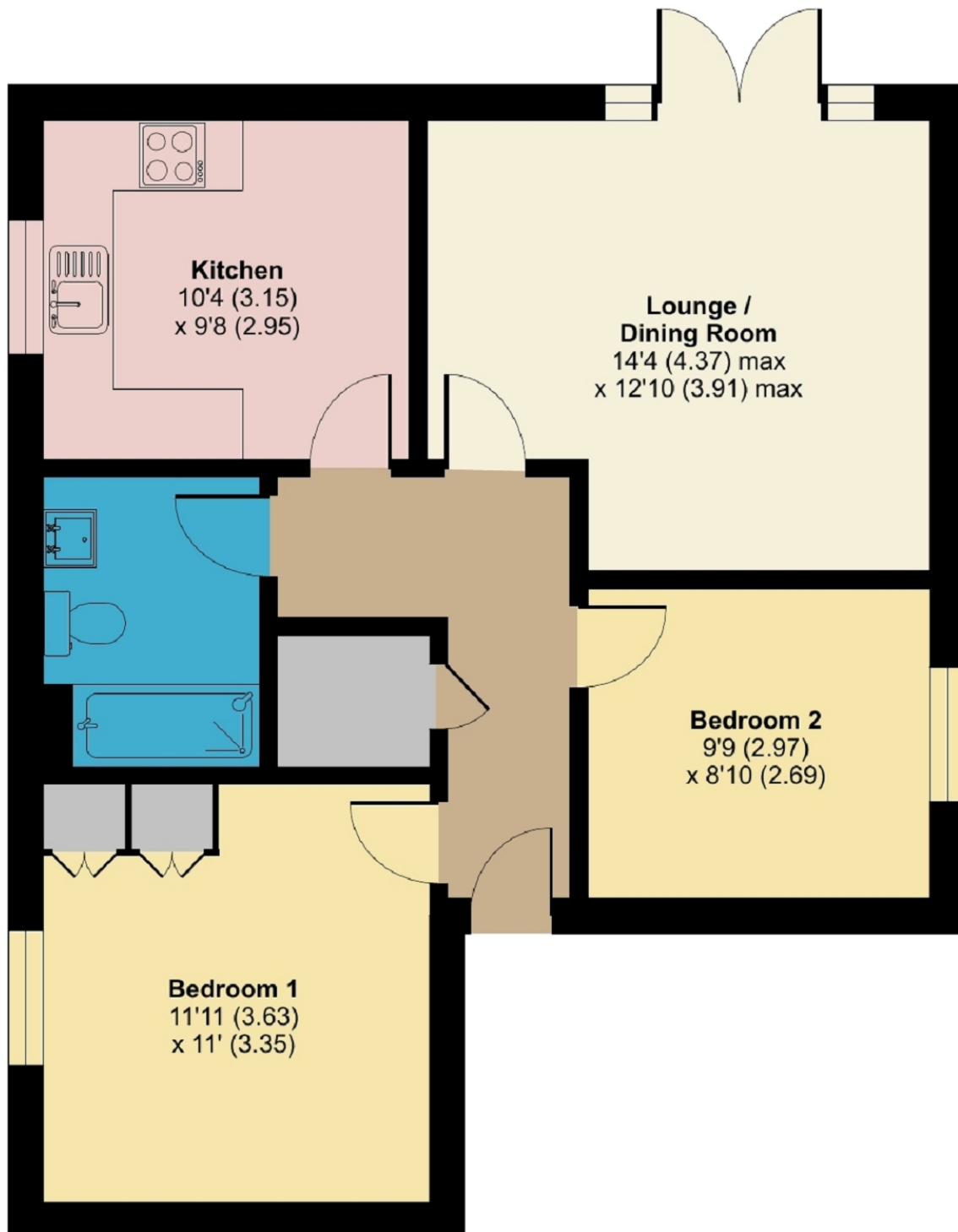
Energy Efficiency Rating		
	Current	Potential
Very energy efficient - lower running costs		
(92+) A		
(81-91) B		
(69-80) C	73	77
(55-68) D		
(39-54) E		
(21-38) F		
(1-20) G		
Not energy efficient - higher running costs		
England, Scotland & Wales EU Directive 2002/91/EC		

The energy efficiency rating is a measure of the overall efficiency of a home. The higher the rating the more energy efficient the home is and the lower the fuel bills will be.

ASTER COURT, FIRETHORN CLOSE, Edgware, HA8 8GF

Approximate Area = 645 sq ft / 60 sq m

For identification only - Not to scale



SECOND FLOOR



Floor plan produced in accordance with RICS Property Measurement 2nd Edition, Incorporating International Property Measurement Standards (IPMS2 Residential). © nichecom 2025. Produced for Melvin Jacobs Estate Agents. REF: 1253268