



F U R R I N G D O N H O U S E





Furringdon House

Furringdon Cross, Nr. Crewkerne, Somerset TA18 7NH

Crewkerne 1 ½ miles with rail link to London Waterloo • Ilminster 7 miles

Yeovil 8 ½ miles • Bridport 15 miles

A beautifully presented spacious character family home with adjacent letting cottage and coach house with garaging below. Indoor swimming pool complex and all-weather tennis court, all set in the most attractive, well maintained and enclosed private gardens.

- Superb Six Bedroom Family House
- Adjacent Two Bedroom Cottage
- Open Plan One Bedroom Coach House
- Indoor Pool and All-Weather Tennis Court
 - Twin Carports and Garages
 - Beautifully Maintained Gardens
 - Grounds Approaching 2 acres
 - Attractive Countryside Views
 - Freehold
 - Council Tax Band G

Stags Yeovil
4/6 Park Road,
Yeovil, Somerset, BA20 1DZ

Tel: 01935 475000

Email: yeovil@stags.co.uk

The London Office
40 St James's Place
London SW1A 1NS

Tel: 020 7839 0888

Email: enquiries@tlo.co.uk



@StagsProperty



stags.co.uk



Situation

Furringdon House is situated approximately ½ mile from the thriving village of Merriott which provides local facilities including various shops, two public houses, church and village hall, primary and pre-school.

The area is renowned for its variety of scholastic facilities catering for both the private and state sectors. Nearby private schools include Perrott Hill, Hazelgrove, Sherborne Boys, Girls and Prep schools, along with the Millfield Independent School with both day and boarding options for 2-18 years.

The market town of Crewkerne is approximately 1 ½ miles offering a wide range of shopping facilities including Waitrose. With the large commercial centre of Yeovil just 8 ½ miles away, the town offers various recreational options including theatre, cinema, clubs and gyms. Restaurants locally cater for all tastes with gastro pubs and fine dining.

The area is well positioned for access to the A303 just 4 miles distant, giving excellent access to either the M3 and London or the M5 via Taunton and the south west. For those who wish to take the train, stations can be found at Crewkerne, Yeovil, Castle Cary or Sherborne. The nearest airports are located at Bristol, Exeter or Bournemouth.

Furringdon House

Furringdon House is believed to date from 1832 and is constructed of cut stone elevations set under a tiled roof with brick and rendered chimneys. The house has been tastefully extended to provide a spacious family home with adjoining cottage being ideal for multi generation living or as an extra income source. There is a single storey stone and tiled extension on the southern elevation together with a semi-circular extension on the northern side and a castellated extension on the western elevation. The accommodation is set over three floors and is presented in excellent decorative order.

The accommodation comprises; porch opening into the main entrance hall with turned staircase rising. Cloakroom. Dining room with parquet floor, carved stone fireplace with inset woodburner. Steps down to the semi-circular study with fitted office furniture. Sitting room with stone fireplace with wood burning stove, parquet flooring and large opening to the family room with archway into a study area. Kitchen/breakfast room with floor and wall mounted units with granite worksurfaces, twin bowl stainless steel sink, tiled alcove inset with 4 oven electric dual control Aga, Blue Lias flagstone floor and opening to the snug with sealed fireplace and door returning to the hall. Games room with oak panelling and twin sliding doors opening onto the central courtyard and concealed oil-fired boiler. On the first floor the master bedroom with hidden door accessing an en suite bathroom with separate shower. Guest bedroom with incorporated bath and screen leading to shower, WC and wash hand basin. Two further double bedrooms and family shower room. Second floor with study landing, two further secondary double bedrooms and shower room.





The Cottage

The outbuilding adjoins the main house on the southern elevation and it utilised as a holiday letting and has a potential annual income of over £25,000. The accommodation comprises of; a hall, kitchen, sitting room with doors onto the private terrace, two double bedrooms and a shower room.

The Coach House

Situated opposite the main house and across the courtyard, the Coach House is constructed of stone elevations under a slate roof with four dormer windows. The ground floor has central twin open carports flanked by large single garages, one currently used as a laundry room with an oil fired boiler. The property is accessed via an external staircase giving access to the accommodation comprising; kitchen/living room opening to the bedroom with en suite shower room. This has also been used as a holiday let and has an annual income potential of approx £25,000 per annum.

Indoor Swimming Pool Complex

This impressive indoor swimming pool complex is also constructed of stone elevations with eight double glazed sliding doors all set under a slate roof, along with a large area of PV Solar Panels which power the hot water in the main house and generate an income of approx. £1500 / year from a grid feedback scheme. The complex houses the pool plant room, filtration system, two changing rooms and separate gym. The indoor heated pool measures 21.78m x 11.30m with a tiled surround.

Gardens & Grounds

The property is approached through electric wrought iron gates with stone pillars and balled finials. A tarmac drive flanked by stone walling with borders opens onto an extensive tarmac area for parking and turning which forms the central courtyard. Adjacent to this there are a number of lawns with well-stocked borders screened with laurel hedging and mature coniferous trees. Steps lead up to a terrace in front of the pool house. A further area of garden accessed between the pool house and the coach house provides a large expanse of level lawn with a timber and glazed greenhouse and enclosed seating area. Lying to the rear of the pool is a further private paved terrace and access to the all-weather tennis court screened by further hedging. The garden borders farmland to the south and east. The lawn continues on the western side with a further private terrace for the cottage. In the south west corner there is a hidden garden with a large timber garden store and further shed and 3,000 litre oil tank. The western garden has a beech hedge screen from the main road and a small private terrace and separate gate leading onto the lane. In all the gardens and grounds total just under 2 acres.





Services

Mains water and electricity. Private drainage (Septic tanks and separate Bio-Digester)

Tenure - Freehold

Council Tax Band G

Local Authority

South Somerset District Council, The Council Offices, Brympton Way, Yeovil, BA20 2 HT. Telephone 01935 462462

Fixtures and Fittings

All fixtures and fittings unless specifically referred to within the particulars are

expressly excluded from the sale of the freehold. However, certain items may be available by separate negotiation.

Viewings

Strictly by appointment through the vendors selling agent, Stags Yeovil office. Telephone 01935 475000 or email yeovil@stags.co.uk

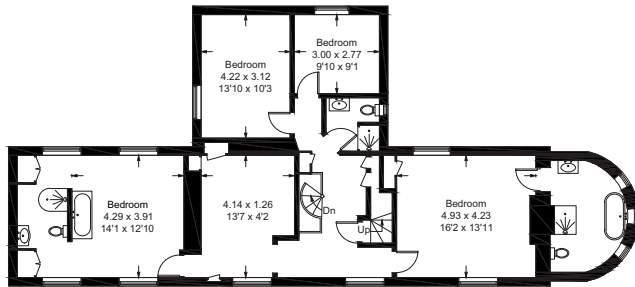
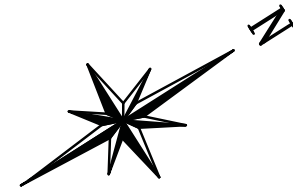
Directions

From Yeovil proceed west on the A30 passing through the villages of West Coker and East Chinnock. Proceed for just under 3 miles taking a right turn signed to Haselbury Mill and Tithe Barn (brown sign) and enter Lower Severalls Road. Continue on this lane for

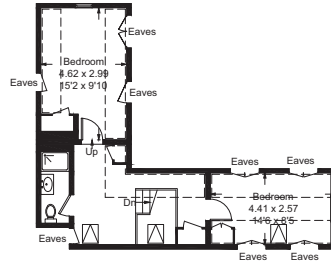
approximately 1 mile and Furrington House is the last property on the left just before the junction with the A356.

Disclaimer

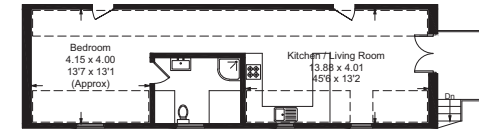
These particulars are a guide only and should not be relied upon for any purpose.



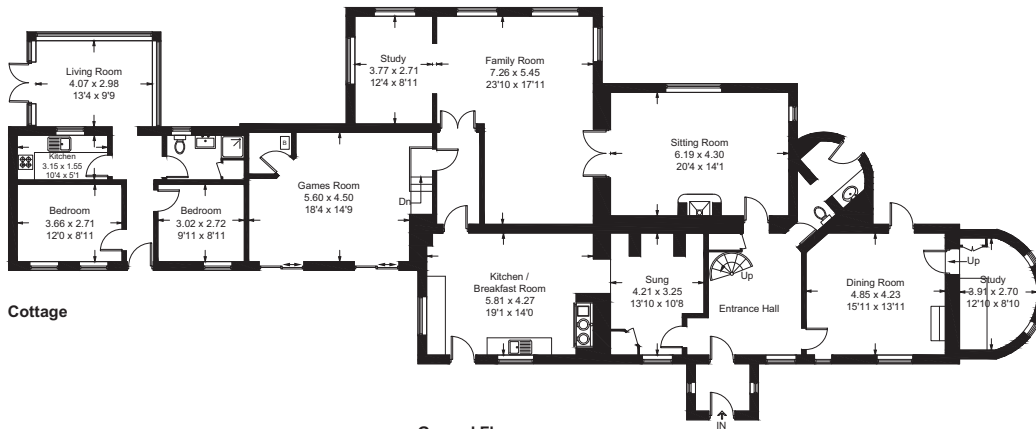
First Floor



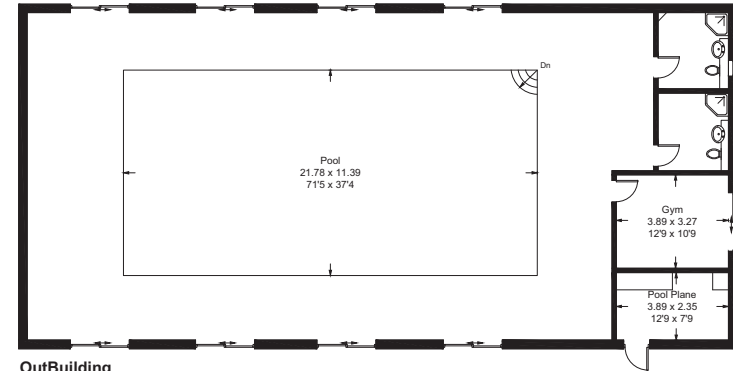
Second Floor



**Coach House
First Floor**



Ground Floor



OutBuilding

(Not Shown In Actual Location / Orientation)



F U R R I N G D O N H O U S E

