



Land Adjacent To

33 Lowfield Road,
Barlby

Offers in the region of £90,000



- BUILDING PLOT
- OUTLINE PLANNING FOR A BUNGALOW GRANTED DEC 2022
- CUL-DE-SAC LOCATION IN THE CENTRE OF BARLBY VILLAGE



Planning

By decision number 2022/1102/OUT, outline planning permission has been granted for a bungalow. A copy of the planning decision can be viewed on <https://public.selby.gov.uk/online-applications/applicationDetails.do?activeTab=summary&keyVal=RINVPINXG0Q00> or requested from the agents.

Local Authority

North Yorkshire.

Tenure

Assumed Freehold.

Services

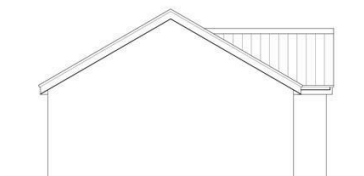
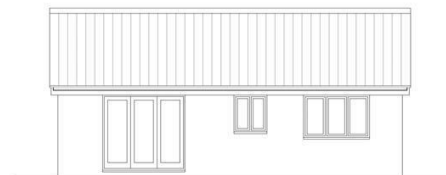
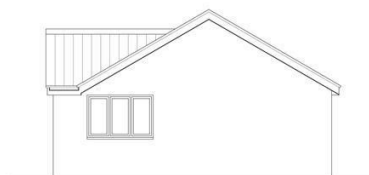
Mains gas, water and electricity are available locally but may need to be connected to the site.

Note

The second garage space and triangular piece of land to the front of this may be available via separate negotiation with North Yorkshire Council.

Measurements

19.3m x 18.2m



T: 01757 293620

E: eproperty@elmhirstparker.com

W: epestategents.com

13 Finkle Street Selby
North Yorkshire
YO8 4DT



Find us on.. **rightmove**

