



ESTATE AGENTS

51, Oxford Road, St. Leonards-On-Sea, TN38 9ES

Web: www.pcmestateagents.co.uk
Tel: 01424 839111

Price £285,000

PCM Estate Agents welcome to the market this well-presented THREE BEDROOM SEMI-DETACHED HOUSE with FANTASTIC REAR GARDEN. Located on this sought-after and quiet road in St Leonards, within easy reach of local schooling.

Inside the property offers spacious accommodation throughout comprising a generous entrance hallway, lounge, kitchen, SEPARATE DINING ROOM leading out to the garden, first floor landing, THREE GOOD SIZED BEDROOMS and a LUXURY SHOWER ROOM. Externally the property occupies a GENEROUS PLOT with a LARGE FAMILY FRIENDLY REAR GARDEN, with additional garden area to the front.

The property is considered an IDEAL FAMILY HOME, please call PCM Estate Agents now to arrange your immediate viewing to avoid disappointment.

PRIVATE FRONT DOOR

Leading to:

ENTRANCE HALLWAY

Stairs rising to first floor accommodation, under stairs storage area, double glazed window to side aspect, radiator.

LOUNGE

13'8 x 11'4 (4.17m x 3.45m)

Spacious light and airy room with two doubled glazed windows to front aspect, radiator.

DINING ROOM

11'10 x 9'8 (3.61m x 2.95m)

Double glazed French doors to rear aspect leading out to the garden, double glazed window to rear aspect, radiator.

KITCHEN

9'5 x 8'5 (2.87m x 2.57m)

Comprising a range of eye and base level units with worksurfaces over, ample space for appliances including cooker, fridge freezer, washing machine and dishwasher, under stairs storage/ larder cupboard, double glazed window to rear aspect overlooking to the garden, part glazed door to side aspect.

FIRST FLOOR LANDING

Loft hatch, built in shelving, double glazed window to side aspect.

BEDROOM

11'11 x 10'11 (3.63m x 3.33m)

Double glazed window to rear aspect, radiator.

BEDROOM

11'8 x 11'1 (3.56m x 3.38m)

Double glazed window to front aspect, radiator.

BEDROOM

8'3 x 6'9 (2.51m x 2.06m)

Double glazed window to front aspect, radiator.

SHOWER ROOM

Luxury suite comprising a walk in double shower, floating wash hand basin with storage below, wall mounted LED mirror, dual flush wc, ladder style radiator, part tiled walls with matching floor tiles, extractor fan, two double glazed obscured windows to rear aspect.

REAR GARDEN

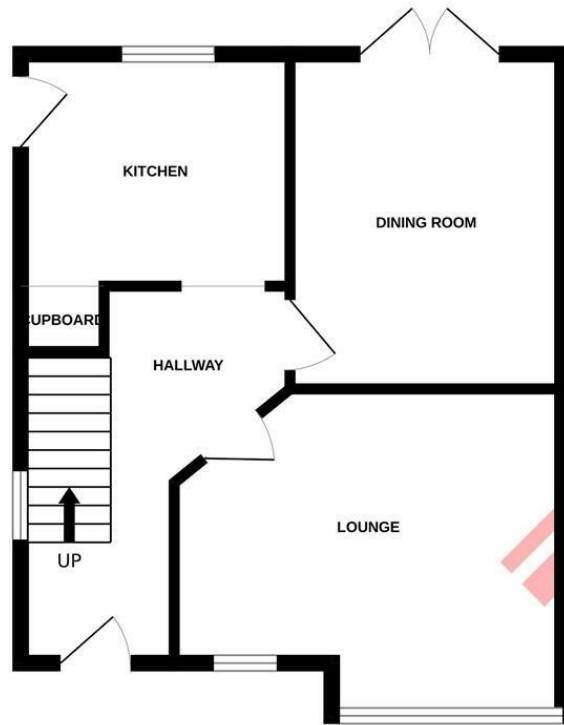
A particular feature of the property, extending to a good size and featuring a range of mature shrubs, plants and trees, side access to the front of the property.

OUTSIDE - FRONT

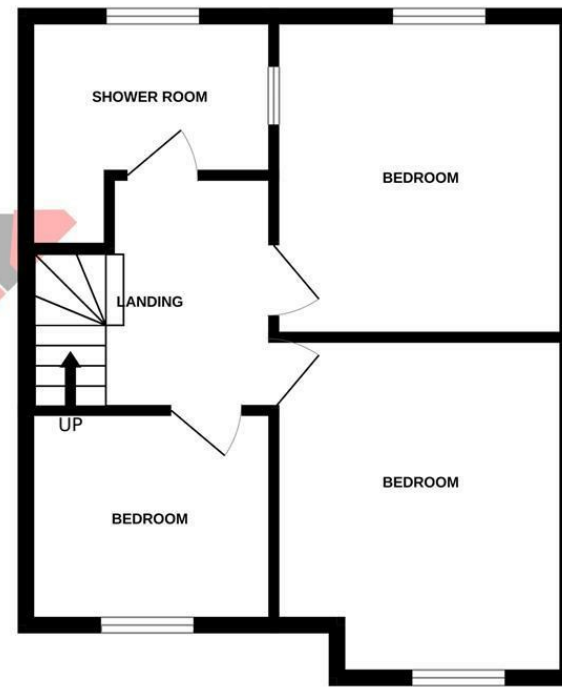
Garden area predominantly laid to lawn with pathway leading to the front door.



GROUND FLOOR



1ST FLOOR



Whilst every attempt has been made to ensure the accuracy of the floorplan contained here, measurements of doors, windows, rooms and any other items are approximate and no responsibility is taken for any error, omission or mis-statement. This plan is for illustrative purposes only and should be used as such by any prospective purchaser. The services, systems and appliances shown have not been tested and no guarantee as to their operability or efficiency can be given.
Made with Metropix ©2025

PCM endeavour to maintain accurate depictions of properties in Floor Plans and descriptions, however, these are intended only as a guide and purchasers must satisfy themselves by personal inspection. PCM have not tested any services, appliances, equipment or facilities, and nothing in these details should be deemed to be a statement that they are in good working order or that the property is in good structural condition or otherwise.

