

ESTATE AGENTS

2, Norfolk Drive, St. Leonards-On-Sea, TN38 9QP

Web: www.pcmestateagents.co.uk
Tel: 01424 839111

Price £240,000

PCM Estate Agents are delighted to present to the market CHAIN FREE this END OF TERRACED THREE BEDROOM HOUSE with gas central heating, double glazing and an ENCLOSED GARDEN.

Accommodation is arranged over two floors and comprises an entrance hall, DOWNSTAIRS WC, an IMPRESSIVE OPEN PLAN KITCHEN-DINING ROOM, separate LIVING ROOM, upstairs landing, THREE GOOD SIZED BEDROOMS and a bathroom.

The property is conveniently positioned within easy reach of schooling establishments and nearby amenities. Viewing comes highly recommended, please call the owners agents now to arrange your appointment.

DOUBLE GLAZED FRONT DOOR

Opening to:

PORCH

Storage cupboard housing the gas meter, further wooden partially glazed door opening to:

ENTRANCE HALL

Stairs rising to upper floor accommodation, radiator, providing access to:

DOWNSTAIRS WC

Low level wc, wash hand basin, radiator, double glazed window to front aspect.

LIVING ROOM

16'9 x 10'11 (5.11m x 3.33m)

Tiled flooring, television point, radiator, double glazed window to front aspect.

KITCHEN-DINER

16'2 x 12'9 (4.93m x 3.89m)

Fitted with a matching range of eye and base level cupboards and drawers with worksurfaces over, island with breakfast bar, four ring gas hob with waist level oven and microwave, integrated tall fridge freezer, separate integrated tall freezer, integrated dishwasher, integrated ceramic one & ½ bowl drainer-sink with mixer tap, ample space for dining table, radiator, down lights and pendant lighting over the island, double glazed door and window to rear aspect.

FIRST FLOOR LANDING

Coving to ceiling, storage cupboard over the stairs, additional cupboard with shelving, utility cupboard housing space and plumbing for washing machine and tumble dryer.

BEDROOM

12'3 x 9'8 (3.73m x 2.95m)

Radiator, down lights, coving to ceiling, built in wardrobe, double glazed window to front aspect.

BEDROOM

13' x 8'5 (3.96m x 2.57m)

Coving to ceiling, down lights , double glazed window to rear aspect.

BEDROOM THREE

9'6 x 7'4 (2.90m x 2.24m)

Coving to ceiling, radiator, double glazed window to rear aspect.

BATHROOM

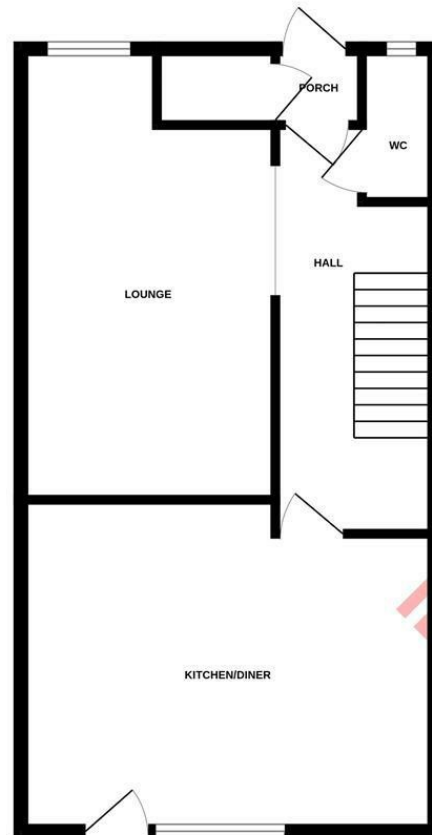
Panelled bath with mixer tap and electric shower above, dual flush low level wc, pedestal wash hand basin, tiled walls, non-slip flooring, radiator, double glazed window to front aspect.

REAR GARDEN

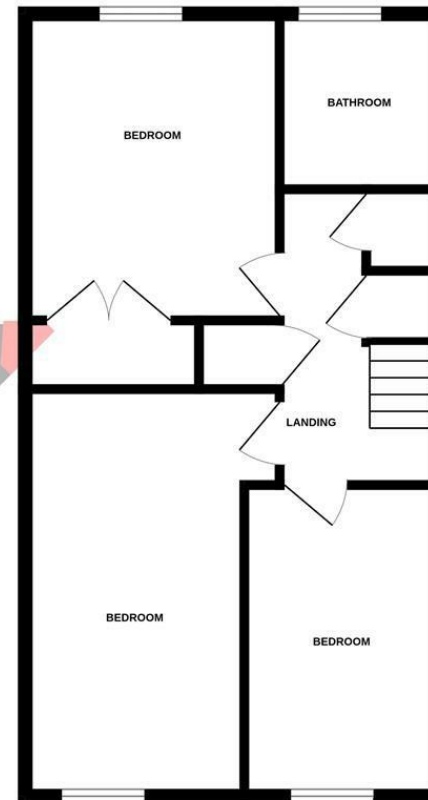
Low maintenance, laid predominantly with artificial lawn, pergola, wooden shed, fenced boundaries, gated rear access.



GROUND FLOOR



1ST FLOOR



Whilst every attempt has been made to ensure the accuracy of the floorplan contained here, measurements of doors, windows, rooms and any other items are approximate and no responsibility is taken for any error, omission or mis-statement. This plan is for illustrative purposes only and should be used as such by any prospective purchaser. The services, systems and appliances shown have not been tested and no guarantee as to their operability or efficiency can be given.
Made with Metropix ©2025

PCM endeavour to maintain accurate depictions of properties in Floor Plans and descriptions, however, these are intended only as a guide and purchasers must satisfy themselves by personal inspection. PCM have not tested any services, appliances, equipment or facilities, and nothing in these details should be deemed to be a statement that they are in good working order or that the property is in good structural condition or otherwise.

Energy Efficiency Rating		
	Current	Potential
Very energy efficient - lower running costs		
(92 plus) A		86
(81-91) B		
(69-80) C		68
(55-68) D		
(39-54) E		
(21-38) F		
(1-20) G		
Not energy efficient - higher running costs		
England & Wales		
EU Directive 2002/91/EC		

Environmental Impact (CO ₂) Rating		
	Current	Potential
Very environmentally friendly - lower CO ₂ emissions		
(92 plus) A		
(81-91) B		
(69-80) C		
(55-68) D		
(39-54) E		
(21-38) F		
(1-20) G		
Not environmentally friendly - higher CO ₂ emissions		
England & Wales		
EU Directive 2002/91/EC		