



PCMA

ESTATE AGENTS

45, Priory Road, Hastings, TN34 3JJ

Web: www.pcmestateagents.co.uk
Tel: 01424 839111

Price £525,000

PCM Estate Agents are delighted to present to the market an opportunity to purchase this RARELY AVAILABLE ATTRACTIVE BAY FRONTED THREE STOREY VICTORIAN THREE/FOUR BEDROOM HOME, positioned on this sought after road within the WEST HILL REGION of Hastings, with LOVELY VIEWS extending over the West Hill itself and OUT TO SEA, including some views of the East Hill.

The property offers adaptable accommodation arranged over three floors and an ENCLOSED COURTYARD STYLE GARDEN with GARDEN STUDIO. Inside you are greeted by a spacious entrance hall which provides access to a AN OPEN PLAN KITCHEN/DINING ROOM, utility room and access to the garden. To the first floor there is a LARGE LIVING ROOM (which could be also utilised as an additional bedroom), a further bedroom and bathroom. To the second floor there are two further well proportioned bedrooms.

Stunning views can be enjoyed from the front facing rooms and this home offers modern comforts including gas fired central heating.

Located just a short walk from Hastings Historic Old Town and the new town itself, with a mainline railway station with convenient links to London, and the seafront and promenade. The property is also within reach of a number of popular schooling establishments and bus routes.

Viewing comes highly recommended, please call the owners agents to book your viewing.

PARTIALLY GLAZED FRONT DOOR

Opening to:

ENTRANCE VESTIBULE

High ceilings with cornicing, picture rail, wooden partially glazed door opening to:

ENTRANCE HALL

Tiled flooring, radiator, staircase rising to upper floor accommodation with two understairs storage cupboards - one of which houses the consumer unit for the electrics.

DINING ROOM

14'8 into bay x 11'5 (4.47m into bay x 3.48m)

Recessed shelving, fireplace, exposed wooden floorboards, radiator, sash bay window to front aspect with angled views over the West Hill and out to sea. Partially open plan to:

KITCHEN

11'3 x 8'5 (3.43m x 2.57m)

Fitted with a range of matching eye and base level cupboards and drawers with work surfaces over, four ring gas hob with oven below and extractor over, integrated tall fridge/freezer, inset 1 1/2 bowl sink unit with mixer tap, space and plumbing for dishwasher, exposed wooden floorboards, part tiled walls, radiator, ample storage space, return door to entrance hall, wooden double opening french doors with opaque glass to rear aspect providing access to the courtyard garden.

UTILITY ROOM

10'1 x 7'8 (3.07m x 2.34m)

Tiled flooring, further range of wall mounted and lower base cupboards and drawers with work surfaces, double bowl ceramic Belfast sink with mixer tap, space and plumbing for washing machine, space and plumbing for tumble dryer, windows and doors to side aspect looking onto and providing access to courtyard garden.

SPLIT LEVEL LANDING

Stairs rising to second floor accommodation, exposed painted wooden floorboards, radiator.

LIVING ROOM

14'8 x 14'8 into bay narrowing to 12' (4.47m x 4.47m into bay narrowing to 3.66m)

(Whilst this room is currently utilised as a Living Room, it could be used as a additional Bedroom.)

Exposed wooden floorboards, tall ceilings with cornicing, picture rail, marble fireplace, television point, sash window to front aspect in addition to a deep sash bay window to the front aspect with lovely angled views over the West Hill and out to sea.

BEDROOM

12'4 x 9'7 (3.76m x 2.92m)

Tall ceilings, picture rail, fireplace, built in storage, radiator, sash window to rear aspect.

BATHROOM

Panelled bath with Victorian style mixer tap and shower attachment, shower over bath with shower curtain, vanity enclosed wash hand basin, low level wc, cupboard housing wall mounted boiler and also offering additional storage space, downlights, radiator, sash window to rear aspect.

SECOND FLOOR LANDING

Double glazed window to rear aspect, picture rail, hatch providing access to loft space.

BEDROOM

14'8 x 11'3 (4.47m x 3.43m)

Exposed wooden floorboards, built in storage cupboard, radiator, two sash windows to front aspect with lovely views over the East and West Hills and out to sea.

BEDROOM

12'1 x 9' (3.68m x 2.74m)

Exposed wooden floorboards, fireplace, built in storage, radiator, sash window to rear aspect with townscape views.

REAR COURTYARD

Rear courtyard style garden with ample space for bistro style table and chairs to sit and eat alfresco or entertain. wooden shed, planting beds. This also provides access to a:

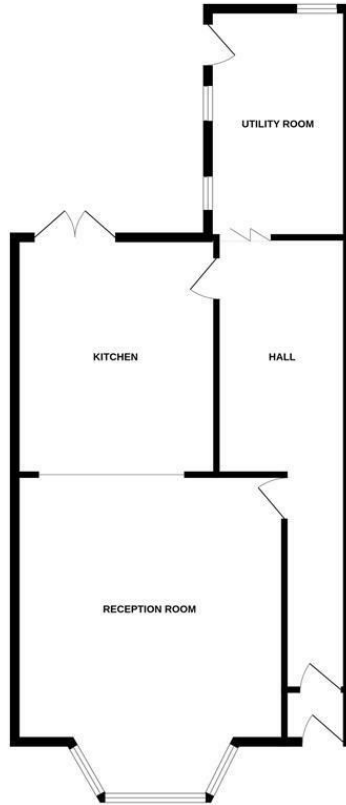
GARDEN ROOM

With a decked veranda to the front, UPVC double glazed double opening doors, UPVC double glazed windows to side and rear aspects, power and light connected, wood laminate flooring, This is currently used as a Home Office but could be utilised a Studio space or Summerhouse.

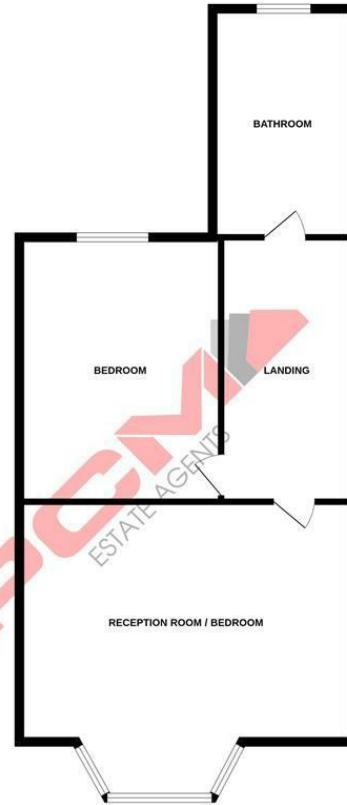
Council Tax Band: D



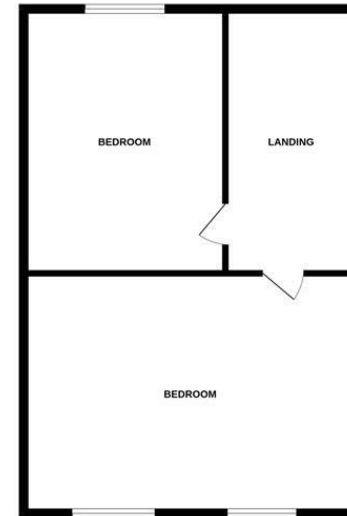
GROUND FLOOR



1ST FLOOR



2ND FLOOR



Whilst every attempt has been made to ensure the accuracy of the floorplan contained here, measurements of doors, windows, rooms and any other items are approximate and no responsibility is taken for any error, omission or mis-statement. This plan is for illustrative purposes only and should be used as such by any prospective purchaser. The services, systems and appliances shown have not been tested and no guarantee as to their operability or efficiency can be given.
Made with Metropix ©2024

Energy Efficiency Rating		Current	Potential
Very energy efficient - lower running costs			
(92 plus) A			81
(81-91) B			
(69-80) C			
(55-68) D			
(39-54) E		53	
(21-38) F			
(1-20) G			
Not energy efficient - higher running costs			
England & Wales		EU Directive 2002/91/EC	

Environmental Impact (CO ₂) Rating		Current	Potential
Very environmentally friendly - lower CO ₂ emissions			
(92 plus) A			81
(81-91) B			
(69-80) C			
(55-68) D			
(39-54) E			
(21-38) F			
(1-20) G			
Not environmentally friendly - higher CO ₂ emissions			
England & Wales		EU Directive 2002/91/EC	

PCM endeavour to maintain accurate depictions of properties in Floor Plans and descriptions, however, these are intended only as a guide and purchasers must satisfy themselves by personal inspection. PCM have not tested any services, appliances, equipment or facilities, and nothing in these details should be deemed to be a statement that they are in good working order or that the property is in good structural condition or otherwise.