



Oliver
James



Castle Street, Steventon, Abingdon, OX13 6SR

Offers in the region of
£199,950

Description

Situated in a non estate location on the southern edge of the village is this spacious one bedroom first floor apartment offering 671sq ft of living space.

The property benefits from a remodelled bathroom, separate kitchen with views over countryside and a large reception room.

In addition there is gas central heating to radiators, double glazing and bedroom with built in storage.

Outside is a pretty garden and parking area. The property is only a short walk of countryside walks.





Location

The property is situated on the edge of the village but only a short walk from the historic Causeway, primary school and co-op store/Post office that serve the village plus the Public Houses and sports clubs. Steventon is well placed for Abingdon, Oxford and Didcot with its mainline station for London Paddington (approximate journey time of 40 minutes). There is also a modern village hall and in neighbouring Drayton a 18 hole golf course. A regular bus service runs through the village to serve both Abingdon, Didcot and Wantage and the A34 is within easy reach.

Agents Notes

The property is leasehold with a 125 year lease from 20.03.2017 and situated on the first floor of the building.

Ground Rent (reviewable) £250 p/a rising to £500 p/a from 20.03.2042. Service charge £571.25 p/a.

Mains gas, water, drainage and electricity.

The property has not flooded in the last 5 years.

The EPC rating is C and the council tax is band B with Vale of White Horse DC.



Approximate Gross Internal Area
Ground Floor = 6.1 sq m / 66 sq ft
First Floor = 56.2 sq m / 605 sq ft
Shed = 4.1 sq m / 44 sq ft
Total = 66.4 sq m / 715 sq ft



Oliver James

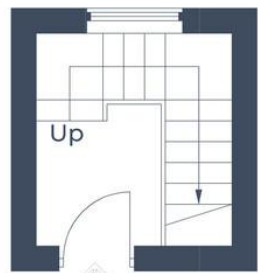
For further information, please contact:

Abingdon Office

www.oliverjamesproperty.com

E: abingdon@oliverjamesproperty.com

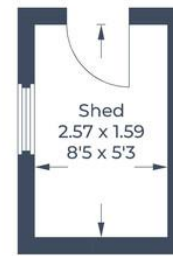
T: 01235 555007



Ground Floor



First Floor



(Not Shown In Actual
Location / Orientation)

Illustration for identification purposes only,
measurements are approximate, not to scale.
© CJ Property Marketing Produced for Oliver James



These particulars, whilst believed to be accurate are set out as a general outline only for guidance and do not constitute any part of an offer or contract. Intending purchasers should not rely on them as statements of representation or fact, but must satisfy themselves by inspection or otherwise as to their accuracy. No person in this firm's employment has the authority to make or give any representation or warranty in respect of the property.