



Oliver
James

FOR SALE
01235 555007
oliverjamesproperty

Oliver
James



Fettiplace Road,
Marcham,
Nr Abingdon, OX13 6PL.

£385,000

Description

A detached house in this popular village 2 miles to the west of Abingdon.

Offering 1296 sq ft of space the property benefits from three double bedrooms and a first floor bathroom that has been converted into a shower room.

On the ground floor there is a cloakroom, sizeable reception hall, kitchen and large 21ft open plan reception room across the rear of the house with a bay window and doors opening onto the west facing garden.

Benefits include a light and airy feel, double glazing, gas central heating to radiators and a personal door from the hall into the integral Garage.

The property has been recently redecorated and ready for somebody to commit and put their own stamp on it, this may include converting the integral garage to further living space or extending the property subject to consents..





Location

Marcham is ideally located only 2 miles West of the A34 offering excellent access to Abingdon, Oxford and Didcot Parkway with its direct rail links to London Paddington in 35 minutes.

Amenities within the village include village store with post office, public house, church, active village cricket club and the sought-after village primary school and nursery school. The newly built village hall offers a community café. The nearby market town of Abingdon and city of Oxford provide a more extensive range of shops, facilities and entertainment. Off North Street lies New Road, leading to what was previously Denman College and the historic All Saints' Church.

Abingdon 2 miles, Oxford 9 miles, Didcot Parkway 8 miles (trains to London Paddington in 40 minutes), M4 (J.13) 16 miles

Agents Notes

The property is freehold.

Mains services are connected including gas, drainage, water and electricity.

The EPC rating is E and the Council Tax is band D with the Vale of White Horse DC.

The property has not flooded in the last 5 years.



Approximate Gross Internal Area
 Ground Floor = 63.6 sq m / 684 sq ft
 First Floor = 56.9 sq m / 612 sq ft
 Total = 120.5 sq m / 1,296 sq ft
 (Including Garage)

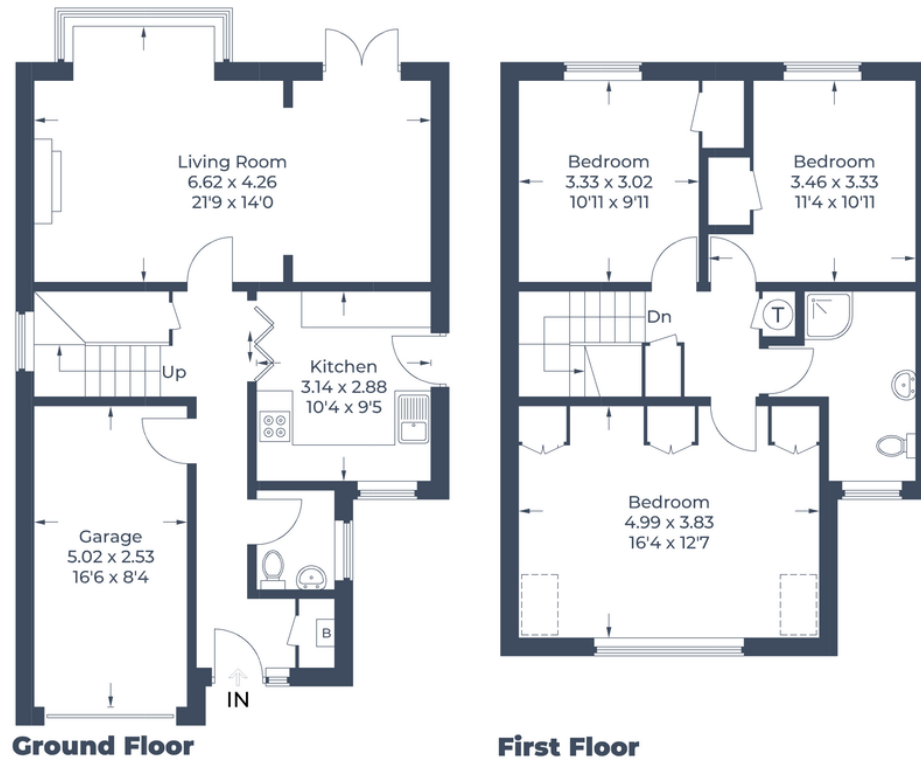


Illustration for identification purposes only,
 measurements are approximate, not to scale.
 © CJ Property Marketing Produced for Oliver James

Oliver James

For further information, please contact:

Abingdon Office
www.oliverjamesproperty.com

E: abingdon@oliverjamesproperty.com
 T: 01235 555007



These particulars, whilst believed to be accurate are set out as a general outline only for guidance and do not constitute any part of an offer or contract. Intending purchasers should not rely on them as statements of representation or fact, but must satisfy themselves by inspection or otherwise as to their accuracy. No person in this firm's employment has the authority to make or give any representation or warranty in respect of the property.