



Beddow Close, Shrewsbury



2



1



1

OIRO £135,000

- Two Bedrooms
- Ground Floor Flat
- One Parking Space
- Secluded Communal Garden
- Bike Store
- Selling With Section 106
- Leasehold
- EPC rating C

Because property is personal with...

BELVOIR!



****NO CHAIN****

A charming two bedroom ground floor flat situated a moments` walk from both the train and bus stations, and Shrewsbury Town Centre.

The property comprises: entrance hall, spacious hall with cupboard, off which is all the living accommodation, kitchen with gas hob & electric oven, dishwasher, washing machine, tumble dryer and fridge/freezer, a bright and spacious reception room with large bay window, two bedrooms, one double with built-in wardrobe and one single, and a good size bathroom with large walk-in shower.

The property benefits from gas central heating, double glazing throughout, secluded communal garden, bike store, and one allocated parking space. It is situated perfectly for travel, shopping, entertaining and walking.

This apartment is being sold with a Section 106 attached to it, making it affordable for buyers - and is being advertised and will be sold at 75% of the current market value of £170,000. Contact Agents for more information.



Lease: 150 years from 2002

Current Ground Rent and Service Charge: £1,200pa

Entrance Hall 1.31m x 0.92m (4'4" x 3'0")

Hallway 0.95m x 3.5m (3'1" x 11'6")

Kitchen 2.67m x 2.68m (8'10" x 8'10")

Reception Room 3.4m x 4.54m (11'2" x 14'11")

Bedroom One 3.42m x 2.69m (11'2" x 8'10")

Bedroom Two 2.35m x 2.86m (7'8" x 9'5")

Bathroom 2.73m x 1.61m (9'0" x 5'4")

BELVOIR!

Property is personal

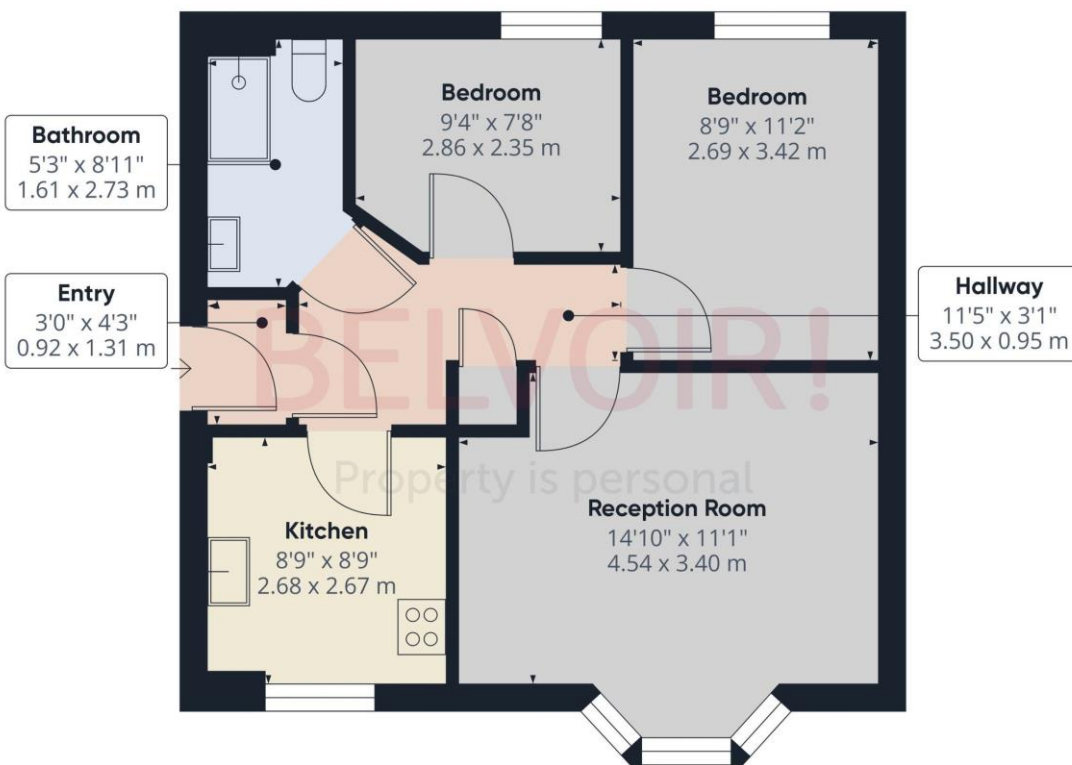
Approximate total area⁽¹⁾

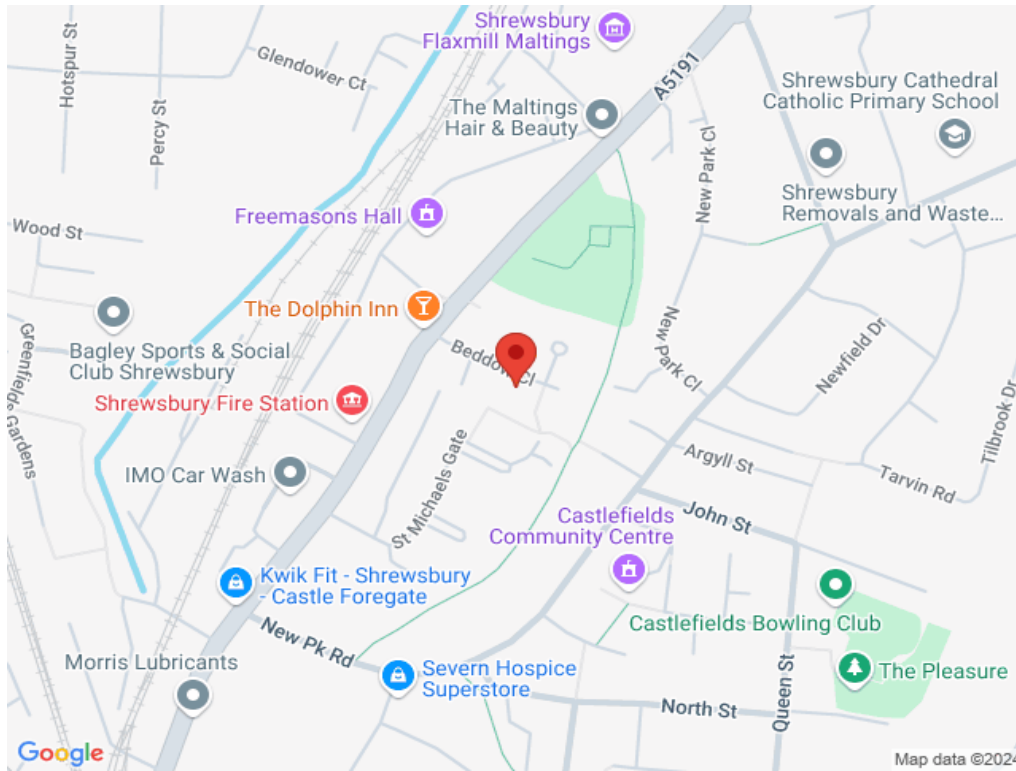
539.81 ft²
50.15 m²

(1) Excluding balconies and terraces.

While every attempt has been made to ensure accuracy, all measurements are approximate, not to scale. This floor plan is for illustrative purposes only.

Calculations are based on RICS IPMS 3C standard.





BELVOIR!

Belvoir Shrewsbury

01743 242 000
shrewsbury@belvoir.co.uk