



Flat 7, 1, Osbern Court Beke Avenue
Shinfield, RG2 9UW

Guide price £280,000 Leasehold



[VillageProperties.co.uk](https://www.villageproperties.co.uk)

Flat 7, 1, Osbern Court Beke Avenue

DESCRIPTION:

VP - Presented to the market is this stunning two double bedroom ground floor apartment with allocated parking for two cars. The property comprises entrance hallway, two bedrooms, en suite to the master, bathroom, living/dining kitchen area and a balcony. Osbern Court is located on Beke Avenue in the Shinfield Meadows development. Just a few minutes away from the centre of Shinfield and School Green, where you will find local shops and amenities, including Co-op and the post office, with the new Lidl that will be coming soon. There are great pubs close by including The Shinfield Arms, with brilliant walks around Langley Mead nature reserve, along with plenty of parks and green space within Shinfield Meadows itself. There are great transport links including regular bus's providing easy access to the towns of Reading or Wokingham and with junction 11 of the M4,

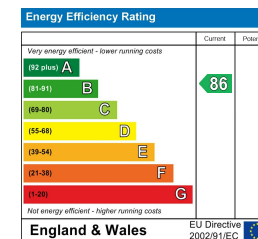
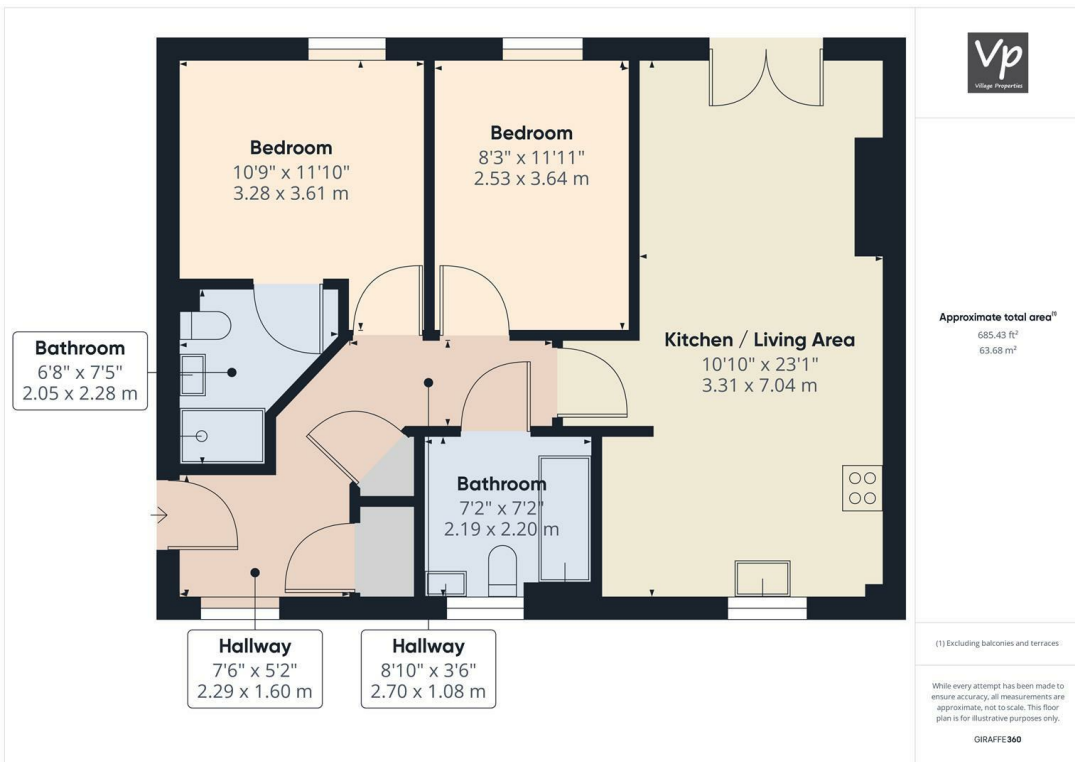
Property Information

Lease Remaining: 120 years
 Service Charge: £100pcm
 approx Ground Rent: £250pa
 Council Tax: Band C

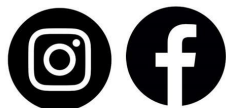
SUMMARY OF ACCOMMODATION:

- GROUND FLOOR APARTMENT
- ALLOCATED PARKING FOR TWO CARS
- EN SUITE TO MASTER
- 360 VIRTUAL TOUR
- BALCONY
- TWO DOUBLE BEDROOMS
- CIRCA 120 YEARS LEFT ON LEASE

ADDITIONAL INFO:



Get Social



VIEWING STRICTLY BY APPOINTMENT:

T: 0118 941 5607
 E: sales@villageproperties.org
 W: www.villageproperties.co.uk

92 School Road
 Reading
 RG31 5AU