



28 Manor Park Close

Tilehurst, RG30 4PS

Guide price £750,000 Freehold



DESCRIPTION

VP - NO ONWARD CHAIN. Presented to the market is this impressive four/five bedroom detached house offering a perfect blend of modern living and comfort.

The accommodation comprises a stunning open plan kitchen/dining room, ideal for entertaining guests or enjoying family meals. The living room, complete with a charming log burner, creates a warm and inviting atmosphere, perfect for cosy evenings in. The property boasts three well-appointed reception rooms, allowing for versatile use of space, whether it be for relaxation, work, or play.

The accommodation includes four spacious bedrooms, with the option of a fifth, ensuring that everyone has their own private retreat. The convenience of two en suites, alongside a further family bathroom and a downstairs WC, caters to the needs of modern family life.

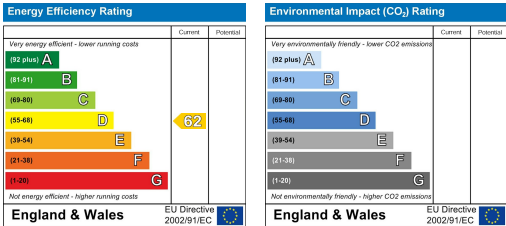
For those who work from home or require a dedicated space for study, an office is conveniently located on the ground floor. Additionally, fitness enthusiasts will appreciate the gym situated in the double garage, providing a private space for workouts.

The beautifully landscaped rear garden offers a serene outdoor space, perfect for enjoying the fresh air or hosting summer gatherings. This property truly embodies the essence of family living in a sought-after location, making it an exceptional opportunity for prospective buyers. Don't miss the chance to make this delightful house your new home.

Council tax band - F

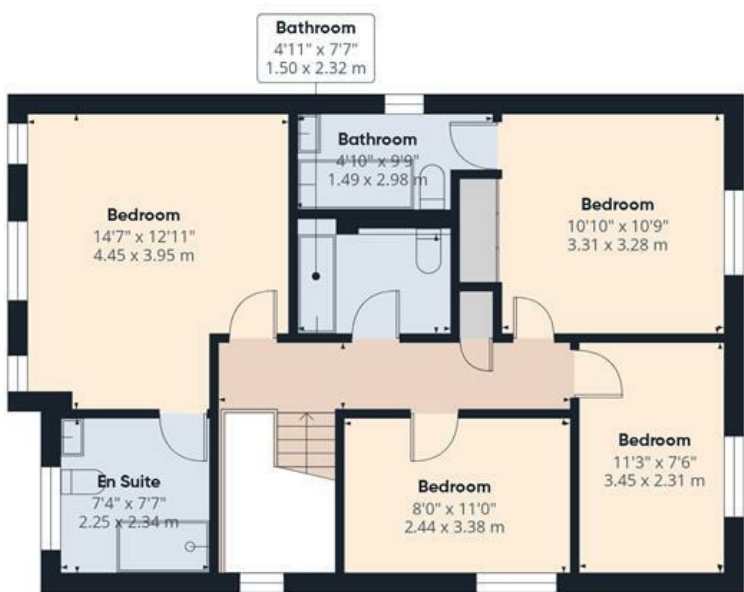
SUMMARY OF ACCOMMODATION

- NO ONWARD CHAIN
- FOUR/FIVE BEDROOMS
- TWO EN SUITES
- OPEN PLAN KITCHEN/DINING ROOM
- DOWNSTAIRS WC
- GYM (DOUBLE GARAGE) & LANDSCAPED REAR GARDEN
- OFFICE ROOM
- OPTIONAL BEDROOM ON GROUND FLOOR
- CUL DE SAC LOCATION
- DETACHED HOUSE

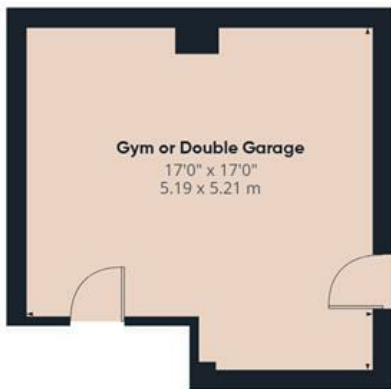




Ground Floor Building 1



Floor 1 Building 1



Ground Floor Building 2



Approximate total area⁽¹⁾
1843 ft²
171.3 m²

(1) Excluding balconies and terraces

Calculations reference the RICS IPMS 3C standard. Measurements are approximate and not to scale. This floor plan is intended for illustration only.

GIRAFFE360